



PASSION • INNOVATION • TRADITION



800.749.1064

ozliftingproducts.com





OBH1000

OZ Lifting Products, LLC is headquartered and warehoused in Winona, Minnesota. We have a long standing dedication to excellent customer service and support. We are committed to designing and manufacturing high quality and long lasting lifting products and solutions. Our lifting equipment has been successfully handling material globally for years. We serve many industries including oil, gas, automotive, aviation, construction and mining. Our products have provided safe lifting solutions in demanding applications for over 15 years.

MEMBERSHIPS

- AWRF** Associated Wire Rope Fabricators
- NFIB** National Federation of Independent Business
- NSC** National Safety Council
- WEF** Water Environment Federation
- WACC** Winona Area Chamber of Commerce

SAFETY STANDARD

- ANSI** American National Standards Institute
- AS** Standards Australia
- ASME** American Society of Mechanical Engineers
- CE** Conformité Européenne
- OSHA** Occupational Safety and Health Administration



PRODUCT INDEX

■ Premium Lever Hoist Pg. 4	■ Manual Winches Pg. 18
■ Premium Chain Hoist Pg. 6	■ Electric Winches Pg. 19
■ Industrial Lever Hoist Pg. 8	■ CompOZite Davit Crane Pg. 20
■ Industrial Chain Hoist Pg. 9	■ CompOZite Elite Davit Crane . . . Pg. 22
■ Electric Chain Hoist Pg. 10	■ Steel Davit Crane Pg. 23
■ Electric Builder's Hoist. Pg. 12	■ Davit Crane Bases Pg. 24
■ Beam Clamps Pg. 14	■ Davit Crane Application Sheet . . Pg. 25
■ Beam Trolleys Pg. 15	■ Fall Protection. Pg. 26
■ Quick Adjust Trolleys Pg. 16	
■ Geared Beam Trolleys Pg. 17	

WHY OZ LIFTING PRODUCTS?



Service

From the first phone call to service after the sale, we carefully manage all aspects of your order. Our standard product can be quoted immediately with most orders shipping same day. We get you the product you need, when you need it. Customer satisfaction is our number one priority. Our team is committed to providing you the service you deserve.



Custom Solutions

In addition to our standard products, we offer customized solutions to meet your specific application. Our engineering team can provide a solution to increase safety, productivity, reliability and durability for long lasting dependability.



No Order Minimums

No required minimum quantity orders.



Quick Ship

Our quick ship program contains our most common items, many of which are used in the building and construction industries where quick turnaround solutions are required. These items ship in 24 business hours at the most with many items available to ship the same day. Our most popular pre-configured products ship same-day if ordered before 12:00pm CST Monday-Friday.



Made in the USA

We offer a full range of new and innovative lifting products designed and manufactured in the United States.



Tested in the USA

At OZ Lifting Products, our customers expect products that have endured advanced testing and rigorous inspection to ensure many years of operation. Our quality control and testing is unmatched. Our products meet and exceed expectations in regards to safety, performance, durability and customer satisfaction. Our products adhere to the ASME, ANSI, AS, OSHA and CE standards keeping you and your equipment safe.



Test Certificate

A test certificate is included with each product and ensures the product has been load tested. An individual serial number provides complete traceability throughout the manufacturing process.



Overload Protected

Our overload protection is standard on all of our premium hoists and select electric series models. The overload protection is integral to the product and prevents the operator from overloading the hoist. The overload resets itself and the hoist can go right back into service. Every product featuring overload is tested at our facility in Minnesota by certified OZ technicians to guarantee product performance.



Custom Length of Lift

We offer custom lengths of lifts on all of our products. Standard or custom length, we have a solution.



Patented



Trademark



Warranty

LEVER HOIST



Features

Standard Overload Protection – Overload device is set at approximately 150% of the rated load. This feature prevents the hoist from being severely overloaded causing damage to the hoist.

Free Wheel Feature – When not under load, the operator can disengage the gearing by positioning the selection switch to the center position. This allows for a quick adjustment of chain for faster operation.

Lifting or Pulling – Can be used for lifting or pulling which makes it a more versatile tool.

Minimal Load Lifting Effort – Double reduction gearing provides easy operation with minimal lifting effort.

360-Degree Handle Rotation – Allows the operator to work in confined spaces.

All-Steel Construction – Featuring a long lasting powder coat finish, the all-steel construction ensures durable protection while providing a long and dependable service life in harsh environments.

Weston-Style Brake System – An enclosed and protected Weston-Style load brake stays clean and dry during the entire load operation. Also equipped with a unique twin pawl design for additional reliability.

Enclosed Gearing – Gears are protected from contamination and debris.

Fully-Enclosed Lift Wheel – Maintains smooth operation while distributing the load over more links of chain. It also helps keep debris from contaminating the lift wheel and self-cleans the chain as it enters the wheel.

Sealed Roller Bearing – This feature provides smooth, controlled operation of the gears and shafts. This ensures maintenance-free lubrication.

Steel Handle with Rubber Grip – Provides a non-slip, sure-grip surface.

Forged Hooks – Forged alloy steel hooks swivel 360° for easier attachment and positioning.

Cast steel safety latches – Heavy-duty, cast-steel safety latch has a bolt-and-lock nut connection. This feature simplifies changing latches in the field.

100% load tested Zinc-Plated Chain – Provides a durable non-oily finish.

Stainless Steel Riveted ID Tags – Made from stainless steel the ID tag is corrosion resistant.

Maintenance – Hoists can be quickly disassembled for fast and easy maintenance. See the videos and maintenance breakdown animations at OZLiftingProducts.com.

***Safety Hooks & Shipyard Hooks available for 1.5 and 3 Ton Lever Hoists**

Standards – CE, ANSI B30.21, AS1418.2



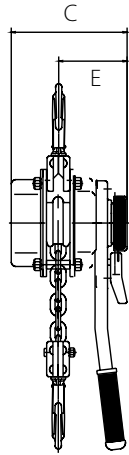
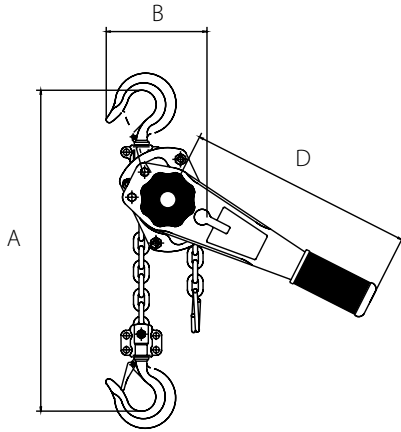
OVERLOAD PROTECTED

OZ075LHOP

FREE SPARE SET OF LATCHES



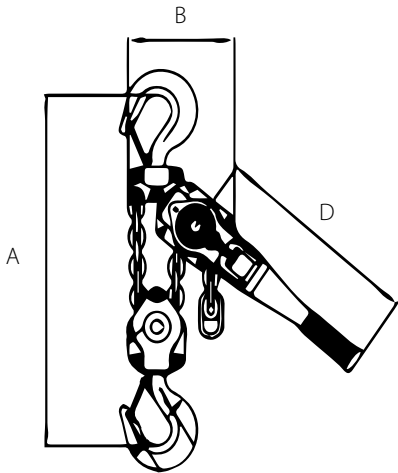
.75, 1.5, 3 T



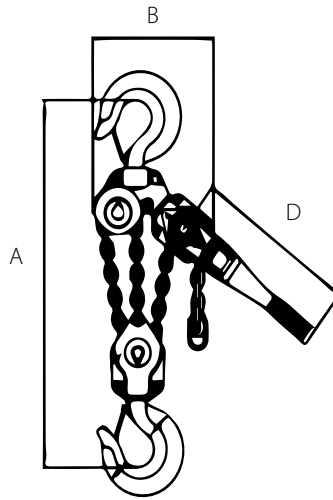
OZ600LHOP



6 T



9 T



	OZ075-LHOP	OZ150-LHOP	OZ300-LHOP	OZ600-LHOP	OZ900-LHOP
Safe Working Lift (tons)	0.75	1.5	3	6	9
Headroom (in)	12.79	14.96	18.90	24.41	27.56
Effort on lever to lift full load (lbs)	30.86	48.50	70.55	74.96	79.37
Falls of Chain	1	1	1	2	3
Diameter of Load Chain (mm)	6	8	10	10	10
Length of Lever Handle (in)	11.02	16.14	16.14	16.14	16.14
Dimensional Information (in)	A	12.79	14.96	18.89	27.55
	B	5.35	6.29	7.08	9.25
	C	5.82	6.77	7.87	7.87
	D	11.02	16.14	16.14	16.14
	E	3.54	3.85	4.52	4.52
Hook-opening, Upper & Lower (in)	1.18	1.41	1.57	1.96	2.28
Net Weight of Head Only (lbs)	13	22	33	51	81

***Standard Lift: 5,10,15, and 20 ft.**
We also do custom rigging

*Dimensions are for reference only and subject to change without notice.

CHAIN HOIST



OZ020CHOP

Features

Standard Overload Protection – Overload device is set at approximately 150% of the rated load. This feature prevents the hoist from being severely overloaded causing damage to the hoist.

Lifting or Pulling – Can be used for lifting or pulling which makes it a more versatile tool.

Minimal Load Lifting Effort – Double reduction gearing provides easy operation with minimal lifting effort.

Unique Hand Wheel Design – This feature enables the hand chain to successfully feed directly into the wheel sprocket from many directions and angles. Thus, the operator can use the hoist while standing to the side of, or even above the load without fear of the hand chain jamming.

All-Steel Construction – Featuring a long lasting powder coat finish, the all-steel construction ensures durable protection while providing a long and dependable service life in harsh environments.

Weston-Style Brake System – An enclosed and protected Weston-Style load brake stays clean and dry during the entire load operation. Also equipped with a unique twin pawl design for additional reliability.

Enclosed Gearing – Gears are protected from contamination and debris.

Sealed Roller Bearing – This feature provides smooth, controlled operation of the gears and shafts. This ensures maintenance-free lubrication.

Forged Hooks – Forged alloy steel hooks swivel 360° for easier attachment and positioning.

Thrust Bearing on Lower Hook – Allows easy rotation of load while suspended and prevents load chain twisting.

Cast steel safety latches – Heavy-duty, cast-steel safety latch has a bolt-and-lock nut connection. This feature simplifies changing latches in the field.

100% load tested Zinc-Plated Chain – Provides a durable non-oily finish.

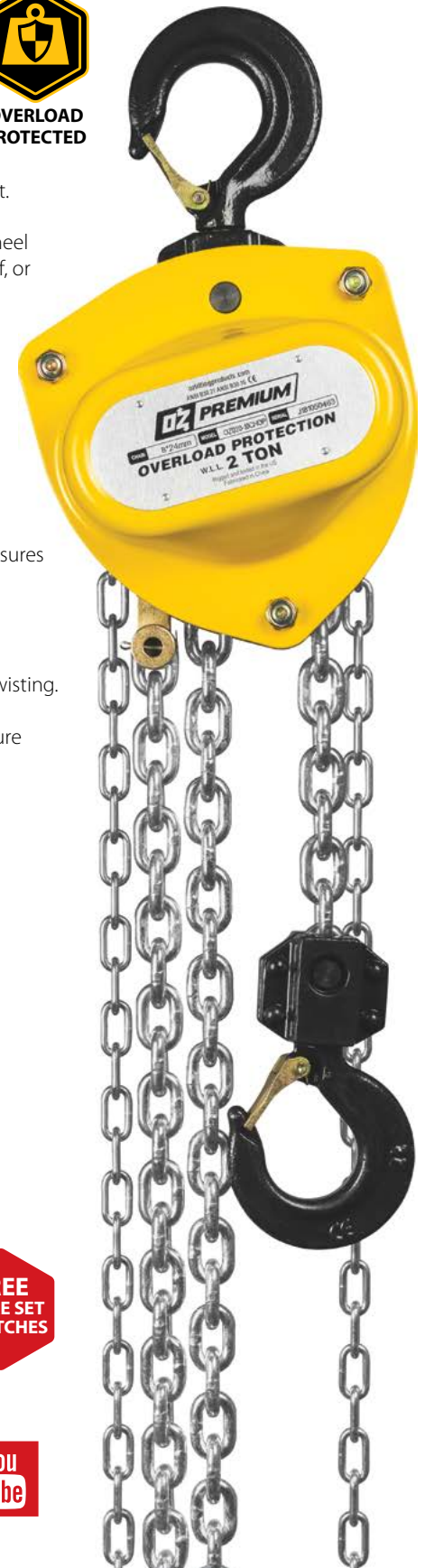
Stainless Steel Riveted ID Tags – Made from stainless steel the ID tag is corrosion resistant.

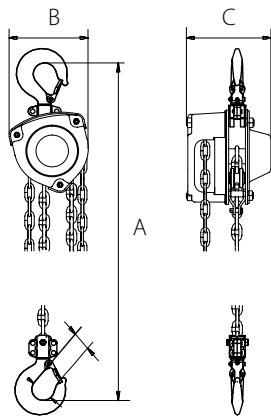
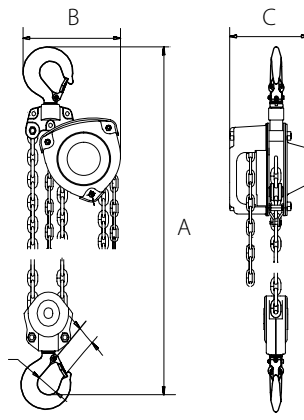
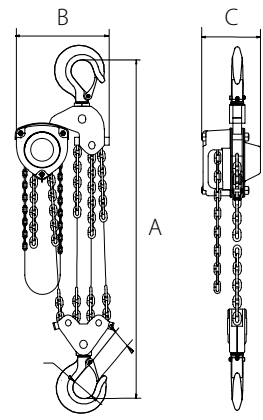
Maintenance – Hoists can be quickly disassembled for fast and easy maintenance. See the videos and maintenance breakdown animations at OZLiftingProducts.com.

Standards – CE, ANSI B30.16, AS1418.2



OVERLOAD PROTECTED

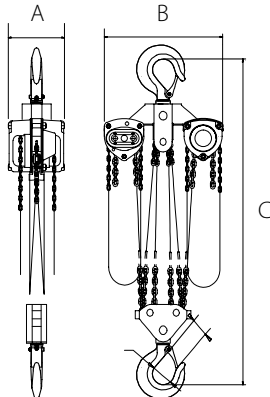


.5,1,1.5,2T**3,5T****10T**

	OZ005-CHOP	OZ010-CHOP	OZ015-CHOP	OZ020-CHOP	OZ030-CHOP	OZ050-CHOP	OZ100-CHOP
Safe Working Load (tons)	.5	1	1.5	2	3	5	10
Falls of Chain	1	1	1	1	2	2	4
Effort to Lift S.W.L (lbs)	3	55	58	74	58	79	84
Loadchain Diameter (mm)	6	6	8	8	8	10	10
Dimensional Information (in)	A	13.58	14.80	17.40	18.50	19.29	27.09
	B	5.83	6.77	7.72	8.28	8.90	11.02
	C	5.20	5.94	6.81	6.89	6.81	7.44
Hook-opening, Upper & Lower (in)	1.10	1.26	1.42	1.42	1.81	1.81	2.24
Net Weight of Head Only (lbs)	21	24	31	36	41	64	114

Standard Lift: 10, 15, 20 and 30 ft.*We also do custom rigging**

*Dimensions are for reference only and subject to change without notice.

20, 30 T

	OZ200-CHOP	OZ300-CHOP
Capacity (tons)	20	30
Falls of Chain	8	12
Effort to Lift S.W.L (lbs)	84 x2	90 x2
Load Chain Diameter (mm)	10	10
Dimensions (in)	A	7.44
	B	24.80
	C	35.04
Hook-opening, Upper & Lower (in)	2.23	3.00
Net Weight of Head Only (lbs)	315	360

10mm Load Chain 1.5 lbs per/ft

***Standard Lift: 10, 15, 20 and 30 ft. - We also do custom rigging**

*Available in 50, 60 and 100 Ton. Please contact for specifications. Special Order.

*Dimensions are for reference only and subject to change without notice.



LEVER HOIST



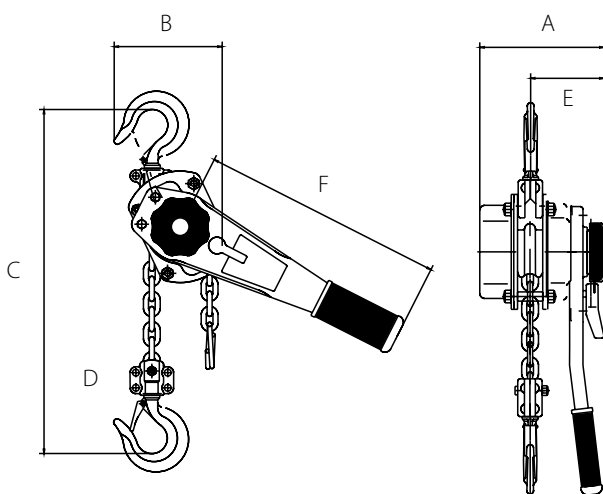
**FREE
SPARE SET
OF LATCHES**

Excludes
¼ Ton Model

Features

- All-steel construction
- Aluminum construction (¼ Ton Model)
- Long lasting powder coat finish
- Steel handle with rubber grip
- Minimal load lifting effort
- Weston-Style brake system with twin pawl design
- 100% load tested grade 80 alloy chain
- Fully-enclosed gearing
- Load sheave bearings
- Forged alloy steel hooks
- Heavy-duty latches
- Carrying bag (¼ Ton Model)

Standards - CE, ANSI B30.21, AS1418.2



OZIND025-LH

OZIND075-LH

	OZIND025-LH	OZIND075-LH	OZIND150-LH	OZIND300-LH
Capacity (tons)	0.25	0.75	1.5	3
Effort to Lift S.W.L (lbs)	44	40s	66s	88s
Falls of Chain	1	1	1	1
Load Chain Diameter (mm)	4x12	6x18	8x24	10x30
Product Dimensions (in)	A	3.86	6.02	6.89
	B	3.62	5.31	5.91
	C	9.45	13.38	16.14
	D	0.83	1.1	1.26
	E	2.36	3.62	3.98
	F	6.3	12.2	16.34
Net Weight (lbs)	3.8	11.8	20	35.6

***Standard Lift: 5, 10, 15 and 20 ft.**

***.25 T Models Standard Lift: 5 and 10 ft.**

We also do custom rigging

*Dimensions are for reference only and subject to change without notice.



CHAIN HOIST



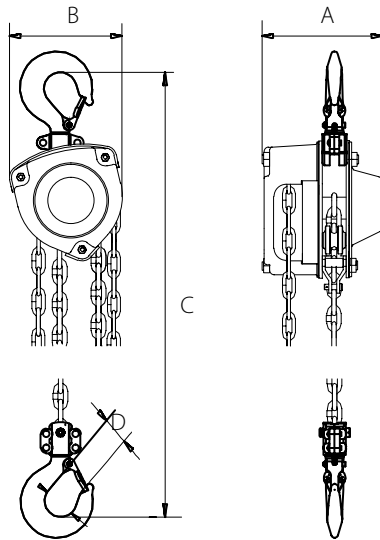
**FREE
SPARE SET
OF LATCHES**

Excludes
¼ Ton Model

Features

- All-steel construction
- Long lasting powder coat finish
- Minimal load lifting effort
- 100% load tested Grade 80 alloy chain
- Weston-Style brake system with twin pawl design
- Zinc plated hand chain
- Fully-enclosed gearing
- Load sheave bearings
- Forged alloy steel hooks
- Thrust bearing on lower hook
- Heavy-duty latches

Standards - CE, ANSI B30.16 and AS1418.2



OZIND020-CH



	OZIND025-CH	OZIND005-CH	OZIND010-CH	OZIND020-CH
Capacity (tons)	0.25	0.5	1	2
Effort to Lift S.W.L (lbs)	55	55	66	88
Falls of Chain	1	1	1	1
Load Chain Diameter (mm)	4x12	5x15	6x18	8x24
Product Dimensions (in)	A	4.02	5.2	5.98
	B	4.18	5.35	5.75
	C	10.2	12.8	14.6
	D	1.3	1.38	1.73
Net Weight (lbs)	4.17	9.9	16	18.8

***Standard Lift: 10, 15, 20, and 30 ft**

***.25 T Models Standard Lift: 10 ft.**

We also do custom rigging

*Dimensions are for reference only and subject to change without notice.



ELECTRIC CHAIN HOIST



Features

Overload Protection – High performance friction clutch that is integrated with the load brake. This device is designed to prevent overloading the hoist.

Hook – Forged carbon steel load hook with a heavy duty latch. Bottom hook features a thrust bearing to allow 360° rotation to prevent twisting of load chain. Top hook is rigid.

Load Sheave – Provides better distribution of the load and smooth lifting with reduced vibration and wear.

Gearing – Precision machined gears heat treated for strength and durability. Oil bath lubrication on all bearing rotating points for a quieter, smoother and cooler operation.

Braking – Dual braking system combines mechanical plus regenerative braking for instant and safe operation.

Chain – Grade 80 alloy steel designed and manufactured in Japan for long and dependable service life.

H3 Duty Class – 30% duty cycle for operation in various applications.

110V Power – 115/1/60 – Standard power making it easy to use virtually anywhere.

Pendant Controls – IP64 ergonomic pendant design for operator comfort. Lift and lower load easily with integrated emergency stop.

Compact Aluminum Body – Compact and lightweight cast aluminum alloy body making it perfect for many work station applications.

Chain Bag – Durable vinyl bag comes standard.

Standards - CE



OZ1000EC

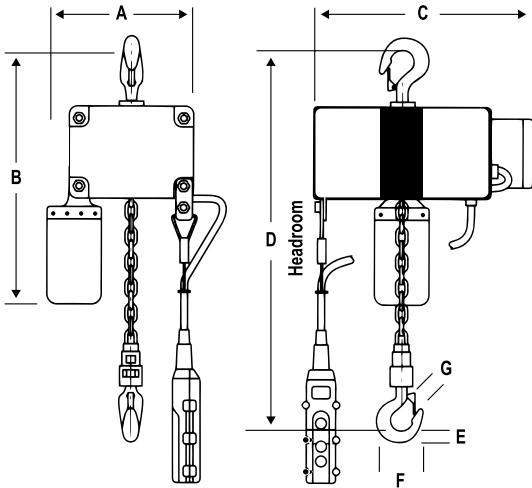


Specs

	OZ500EC	OZ1000EC	OZ2000EC
Voltage	115 / 1 / 60	115 / 1 / 60	115 / 1 / 60
Capacity (lbs)	500	1000	2000
Falls of Chain	1	1	2
Speed (FPM)	12.5	20	10
Standard Lift (ft)	20	20	10
Duty Cycle (min)	15 (25%)	18 (30%)	18 (30%)
Pendant Length (ft)	15	19	19
Power Cord Length (ft)	15	15	15
Net Weight (lbs)	18	53	59

We also do custom rigging

500, 1000, 2000 LBS



	OZ500EC	OZ1000EC	OZ2000EC
A (in)	5	6.69	6.69
B (in)	15	27	27
C (in)	9.5	17.72	17.72
D – Headroom (in)	11	16.93	20.47
E (in)	0.6	1.02	1.25
F (in)	2.5	3.62	4.12
G (in)	0.75	0.87	1.36

*Dimensions are for reference only and subject to change without notice.



**OVERLOAD
PROTECTED**



OZ500EC



ELECTRIC BUILDER'S HOIST



Features

- Lightweight and compact design for convenient mounting
- Dynamic and mechanical brake provides instant and safe braking
- Upper and lower limit switches for additional safety
- Galvanized wire rope with 360-degree weighted hook includes safety latch
- Quick release pendant and power cords
- Operates on standard domestic power supply

Standards - CE

Specs

	OBH500	OBH1000
Lifting Capacity (Full Drum)	500 lbs	1000 lbs
Motor Voltage	115/1/60	115/1/60
Speed	75 fpm	37 fpm
Lifting Height	90 ft	90 ft
Wire Rope	3/16 in	1/4 in
Winch Weight	48 lbs	69 lbs
Gross Weight	54 lbs	73 lbs
Power cord length	15 ft	15 ft
Pendant length	65 ft	65 ft
Full Load AMPS	17.5	15.5
Duty Cycle (min)	15 (25%)	15 (25%)

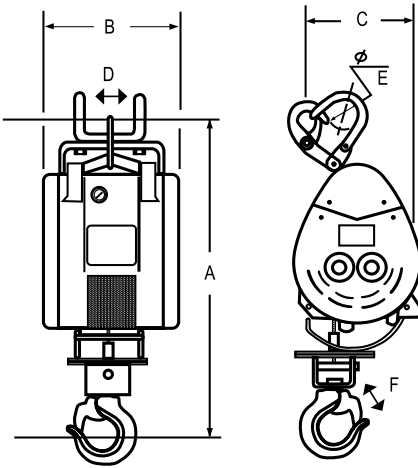
75 fpm
OBH500

37 fpm
OBH1000



OBH1000

500, 1000 LBS



		OBH500	OBH1000
A (in)	Height	26.77	28.50
B (in)	Width	9.50	10.50
C (in)	Depth	7.88	12.00
D (in)	Hanger Width	4.50	4.50
E (in)	Hanger Opening	2	2
F (in)	Hook Opening	1.62	1.50

*Dimensions are for reference only and subject to change without notice.



MOUNTING AND LIFTING SOLUTIONS

Mounting Arm Bracket

- Long last powder coat finish
- Solid mounting bracket
- Portable / Light Weight
- Quick mount
- Made in USA



OBH230	
Width (W)	40 1/2 inches
Height (H)	17 3/4 inches
Mounting Pipe (D)	2 1/8 inches
Capacity	1000 pounds
Net Weight	26 pounds

Pipe Not Included

Pipe Not Included



NEW!



OZ05PBTA-OBH
Trolley with OBH Hanger
Contact us for more information.



NEW!

Refer to OZ05PBTA dimensions on page 15



OZ1GBT-OBH
Geared Trolley with OBH Hanger
Contact us for more information.

Refer to OZ1GBT dimensions on page 17

Clamp with OBH Hanger COMING SOON!



OZ5BCA

Standards - CE,
Portions of ASME 30.16

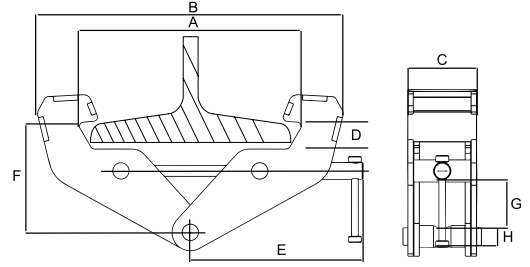


OZ BEAM CLAMP USA



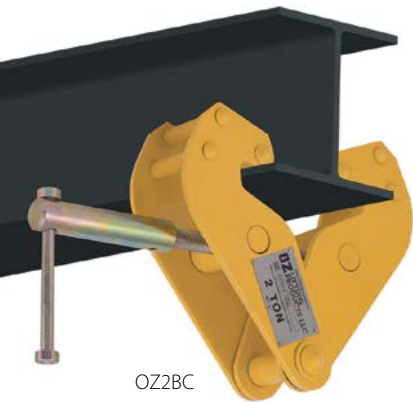
Features

- Robust all-steel fully-welded construction
- Super-quick adjustment to fit most I-Beams (see measurements below)
- ROHS compliant zinc plated finish
- Permanent engraved load rating
- Made in USA



	OZ1BCA	OZ2BCA	OZ3BCA	OZ5BCA	OZ10BCA
Safe Working Load (lbs)	2,000	4,000	6,000	10,000	20,000
A	3 – 9	3 – 9	3.5 – 13	3.5 – 13	3.5 – 13
B	14.75	14.75	20.5	20.5	22
C	2.51	2.91	3.94	4.41	4.72
D	0.9	0.9	1.5	1.5	1.5
E	9.5	9.5	11	11	11.5
F	4.75 – 5.75	4.75 – 5.75	7.5 – 9	7.5 – 9	5.5 – 9.375
G	1.75	1.75	2.5	2.5	4
H	.75	.875	.975	1.125	1.625
Net Weight (lbs)	9	11	22	26	39

*Dimensions are for reference only and subject to change without notice.



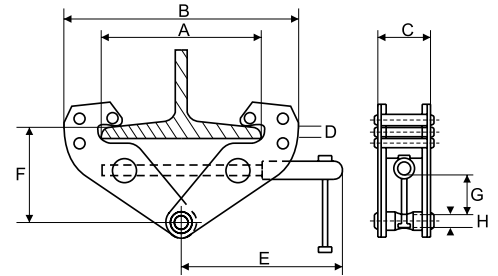
OZ2BC

Standards - CE,
Portions of ASME 30.16

OZ BEAM CLAMP

Features

- Robust, all-steel construction
- Super-quick adjustment to fit most I-Beams (see measurements below)
- Durable baked-enamel paint protection
- Stainless steel ID tag
- Individual test certificate and serial number



	OZ1BC	OZ2BC	OZ3BC	OZ5BC	OZ10BC
Safe Working Load (lbs)	2,000	4,000	6,000	10,000	20,000
A	2.95-9.05	2.95-9.05	3.15-12.60	3.54-12.60	3.54-12.60
B	14.96 max.	14.96 max.	18.50 max.	19.68 max.	20.47 max.
C	2.51	2.91	3.94	4.41	4.72
D	.90	.90	1.57	1.57	1.60
E	9.13	9.13	10.63	10.90	11.22
F	3.54-5.90	3.54-5.90	5.71-8.66	5.71-8.66	6.30-9.05
G	1.02	1.02	2.63	3.50	3.87
H	.75	.87	.96	1.30	1.60
Net Weight (lbs)	9	11	21	25	35

*Dimensions are for reference only and subject to change without notice.



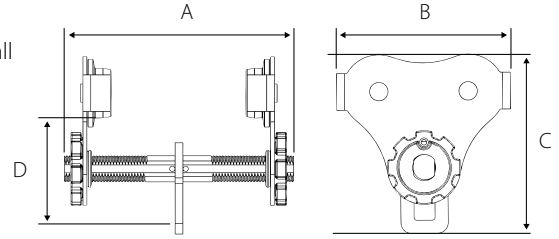
OZ PUSH BEAM TROLLEY USA



OZ1PBTA
[Patent Pending]

Features

- Fastest adjusting trolley requiring no tools to install
- Lightweight robust construction
- ROHS compliant zinc plated finish
- Glow in the dark decals
- Fits to most I, S, and W-Beams
- Durable baked enamel provides protection
- Precision ball bearing trolley wheels
- Side plates protect trolley wheels
- Anti-drop plate
- Stainless steel ID tag
- Individual test certificate and serial number



Standards - ASME



	OZ05PBTA	OZ1PBTA	OZ2PBTA	OZ3PBTA
Safe working load (lbs)	1,000	2,000	4,000	6,000
Adjustable flange width (in)	2.52-8.00	2.75-8.00	3.75-8.0	3.75-8.0
Max Flange Thickness (in)	1.12	1	1.5	1.75
Product dimensions	A	12.25	11	14
	B	8.3	10.2	12
	C	8.5	9.8	11.9
	D	5	5.5	8.5
Minimum radius curve (ft)	2.75	3.35	4.5	5
Net weight (lbs)	16	26	45	80

***12" and 16" inch rods available for OZ05PBTA and OZ1PBTA**

***See wheel and bail dimensions on page 16.**

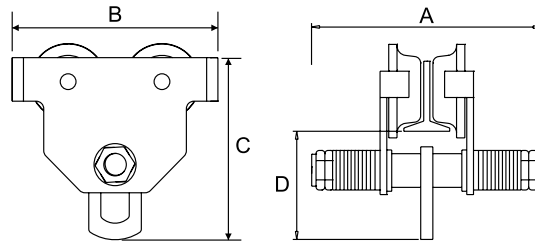
*Dimensions are for reference only and subject to change without notice.



OZ PUSH BEAM TROLLEY

Features

- Lightweight robust construction
- Fits to most I, S, and W-Beams
- Durable baked enamel paint protection
- Precision ball bearing trolley wheels
- Anti-drop plate
- Stainless steel ID tag
- Individual test certificate and serial number



OZ1PBT

	OZ05PBT	OZ1PBT	OZ2PBT	OZ3PBT	OZ5PBT	OZ10PBT
Safe Working Load (lbs)	1,000	2,000	4,000	6,000	10,000	20,000
Adjustable Flange Width (in)	2.52-8.00	2.52-8.00	2.52-12.00	2.52-12.00	2.52-12.00	4.95-12.00
Max Flange Thickness (in)	1.14	1.50	1.61	1.81	2.28	1.97
Product Dimensions (in)	A	9.75	12.75	17.50	17.31	18.87
	B	8.50	9.45	11.81	13.58	15.55
	C	7.67	8.41	11.26	13.23	15.47
	D	4.33	4.90	6.34	7.28	8.66
Minimum Radius Curve (ft)	2.95	3.28	3.60	4.26	4.59	5.57
Net Weight (lbs)	20	23	37	78	114	198

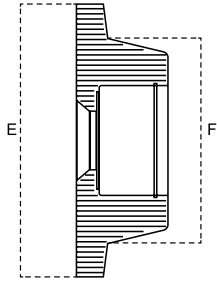
**Standards - CE,
Portions of ASME 30.16**

***See wheel and bail dimensions on page 16.**

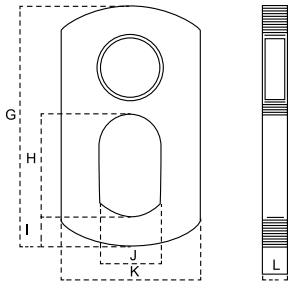
*Dimensions are for reference only and subject to change without notice.



PUSH BEAM TROLLEY WHEELS & BAIL DIMENSIONS



	OZ05PBTA	OZ1PBTA	OZ2PBTA	OZ3PBTA
E (in)	3.25	4.00	4.5	5.75
F (in)	2.38	3.00	3.25	4.38
G (in)	4.38	5.00	6.25	6.88
H (in)	1.50	1.88	2.25	2.5
I (in)	0.63	0.63	0.88	1.0
J (in)	1.00	1.25	1.38	1.5
K (in)	2.25	2.50	3.13	3.5
L (in)	0.38	0.50	0.50	0.63



	OZ05PBT	OZ1PBT	OZ2PBT	OZ3PBT	OZ5PBT	OZ10PBT
E (in)	2.83	3.50	4.00	5.79	6.30	7.45
F (in)	2.05	2.48	2.68	4.34	4.81	5.95
G (in)	4.05	4.21	5.31	7.09	8.67	11.23
H (in)	1.50	1.50	2.01	2.96	3.75	4.73
I (in)	0.75	0.75	0.51	1.03	1.38	1.78
J (in)	1.25	1.25	1.02	1.78	2.37	3.23
K (in)	2.25	2.25	2.76	3.94	4.73	5.91
L (in)	0.39	0.39	0.47	0.63	0.79	0.99

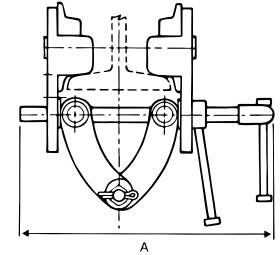
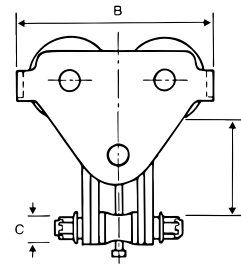
OZ QUICK ADJUST TROLLEY

OZ1QAT



Features

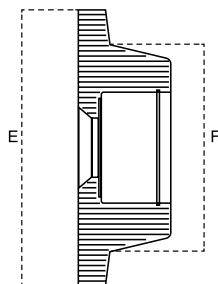
- Lightweight, robust construction.
- Super-quick adjustment to most I, S, and W-Beams (see measurements below)
- Safety handle lock
- Durable baked-enamel paint protection
- Precision ball bearing trolley wheels
- Anti-drop plate
- Stainless steel ID tag
- Individual test certificate and serial number



**Standards - CE,
Portions of ASME 30.16**

	OZ05QAT	OZ1QAT	OZ2QAT	OZ3QAT	OZ5QAT	OZ10QAT
Safe Working Load (lbs)	1,000	2,000	4,000	6,000	10,000	20,000
Adjustable Flange Width (in)	3.63-7.12	2.48-8.27	2.99-8.27	2.99-8.27	3.94-12.01	6.89-12.01
Max Flange Thickness (in)	1.44	2	2.17	1.42	3.07	2.13
Dimensional Information (in)	A	11.75	13.98	14.17	14.17	18.50
	B	8.00	9.53	11.06	12.91	14.84
	C	.75	.88	.88	.97	1.11
(min-max)	D	5.87-7.12	5.75-7.22	6.06-7.22	6.35-7.97	8.81-10.61
Minimum Curve Radius (ft)	3.28	3.28	3.61	4.26	4.60	5.57
Net Weight (lbs)	13	25	38	57	102	205

*Dimensions are for reference only and subject to change without notice.



	OZ05QAT	OZ1QAT	OZ2QAT	OZ3QAT	OZ5QAT	OZ10QAT
E (in)	3.22	4.02	5.00	5.79	6.30	7.34
F (in)	2.28	2.96	3.55	4.34	4.81	5.96

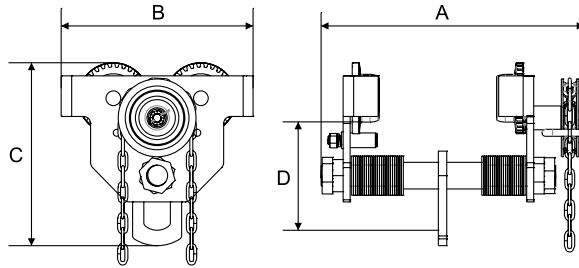
*Dimensions are for reference only and subject to change without notice.



OZ GEARED BEAM TROLLEY

Features

- Lightweight robust construction
- Fits to most I, S, and W-Beams
- Durable baked enamel paint protection
- Gearing for positive load positioning
- Precision ball bearing trolley wheels
- Anti-drop plate
- Stainless steel ID tag
- Individual test certificate & serial number

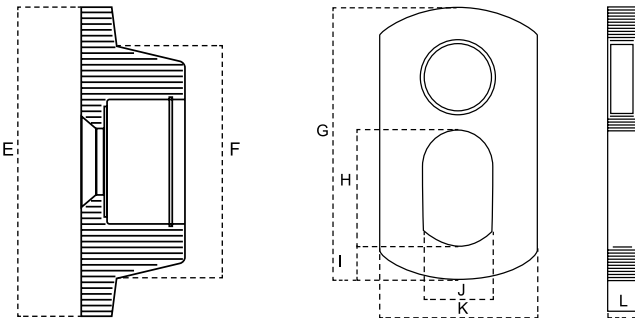


OZ5GBT

	OZ1GBT	OZ2GBT	OZ3GBT	OZ5GBT	OZ10GBT	OZ20GBT	OZ30GBT
Safe Working Load (lbs)	2,000	4,000	6,000	10,000	20,000	40,000	60,000
Adjustable Flange Width (in)	2.52-7.99	3.46-7.99	3.46-7.99	3.46-7.99	4.88-7.99	5.39-12.99	5.83-12.99
Max Flange Thickness (in)	1.50	1.61	1.81	2.28	1.97	2.17	2.36
Product Dimensions (in)	A	14.96	15.20	16.38	17.09	15.59	26.54
	B	9.45	10.63	12.60	13.62	16.77	20.55
	C	8.41	10.28	12.48	15.08	15.75	19.65
	D	4.90	6.08	7.30	9.09	8.31	9.96
Minimum Radius Curve (ft)	3.28	4.27	4.92	5.25	8.3	11.48	14.76
Net Weight (lbs)	28.66	41.89	61.73	90.39	182.98	405.65	650.36
Standard Length of Hand Chain (ft)	9.00	9.00	9.00	9.00	9.00	9.00	9.00
Effort to Pull (lbs)	10.13	18	29.25	23.75	41.85	18	24.08
Chain pulled to move one foot (ft)	3.80	3.90	3.70	4.02	18.90	47.83	31

Standards - CE,
Portions of ASME 30.16

*Dimensions are for reference only and subject to change without notice.
*Available in 50 and 100 Ton please contact for specifications. Special order.



	OZ1GBT	OZ2GBT	OZ3GBT	OZ5GBT	OZ10GBT	OZ20GBT	OZ30GBT
E (in)	3.50	4.00	5.79	6.30	7.45	10.76	10.76
F (in)	2.48	2.68	4.34	4.81	5.95	7.88	7.88
G (in)	3.86	5.31	7.09	8.67	11.23	12.99	13.19
H (in)	1.46	2.01	2.96	3.75	4.73	5.91	5.91
I (in)	0.51	0.51	1.03	1.38	1.78	2.75	2.75
J (in)	1.02	1.02	1.78	2.37	3.23	4.33	4.33
K (in)	1.91	2.76	3.94	4.73	5.91	9.45	9.45
L (in)	0.39	0.47	0.63	0.79	0.99	1.38 ()	1.18

*Dimensions are for reference only and subject to change without notice.



OZ30GBT

With Gear Reduction
20 T and 30 T

CARBON STEEL & STAINLESS STEEL BRAKE WINCHES

FEATURES

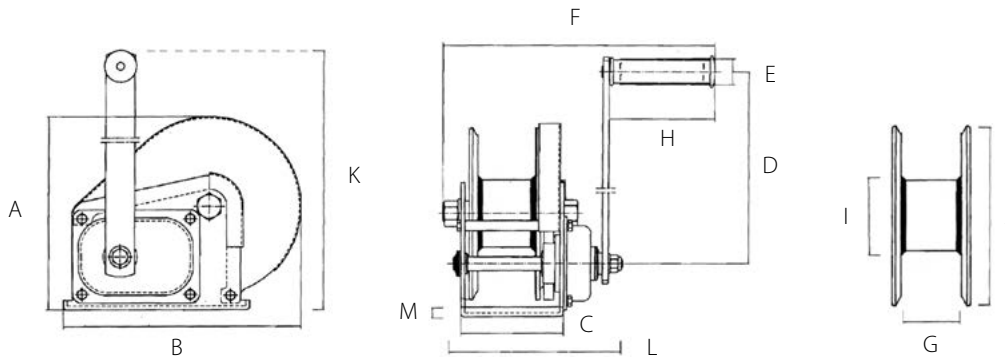
- All steel construction
- Compact design
- Ergonomic rubber handle
- Multiple frame mounting positions
- Fully enclosed gearing
- Solid machined gear
- Automatic weatherproof weston brake
- Dual cable anchor point
- Large diameter drum
- Rubber handle
- High gear ratio
- Test certificate & serial number



Cable/Drum Capacity	1st layer (ft)	Mid drum (ft)	Full drum (ft)
OZ1000BW – OZ1000BWSS using 1/8" wire rope	7	74	140
OZ1000BW – OZ1000BWSS using 3/16" wire rope	5	34	75
OZ1500BW – OZ1500BWSS using 3/16" wire rope	7	66	140
OZ1500BW – OZ1500BWSS using 1/4" wire rope	5	27	89
OZ2000BW – OZ2000BWSS using 1/4" wire rope	8	36	85
OZ2000BW – OZ2000BWSS using 5/16" wire rope	7	22	52

Load Rating (lbs)			
OZ1000BW – OZ1000BWSS	1000	750	500
OZ1500BW – OZ1500BWSS	1500	1250	750
OZ2000BW – OZ2000BWSS	2000	1500	1000

*Cable not included



	OZ1000BW – OZ1000BWSS	OZ1500BW – OZ1500BWSS	OZ2000BW – OZ2000BWSS	
Safe Working Load (lbs)	1000	1500	2000	
Gear Ratio	4.2:1	5:1	10:1	
Dimensions (in)	A	6.22	7.73	8.35
	B	7.20	9.36	11.10
	C	3.46	4.21	5.00
	D	8.26	12.68	12.99
	E	1.06	1.06	1.06
	F	10.43	10.63	11.81
	G	1.98	2.30	2.52
	H	4.29	4.29	4.29
	I	1.90BW – 1.60BWSS	2.38	3.00
	J	5.33	7.00	7.09
	K	10.20	15.31	15.35
L	5.98	6.89	7.87	
M	0.12	0.14	0.16	
Net Weight (lbs)	8.15	16.97	22.06	

*Dimensions are for reference only and subject to change without notice.



AC & DC ELECTRIC WINCHES

Features

- Two-braking system mechanical and dynamic
- Overload protection
- Fully-enclosed gearing
- Machine cut and hardened gears
- Lightweight
- CE rated
- Emergency handle
- Quick connection to davit
- Pendant and power cord included
- Easy bolt on winch to OZ davit cranes

Capacity

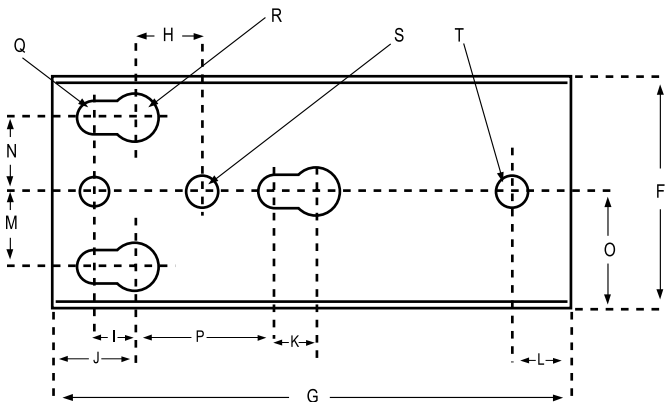
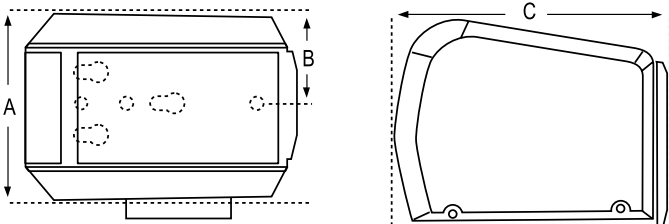
OZACW (110V AC): 1200 lbs.

OZACW (110V AC): 1200 lbs.

Custom Overload Settings Available

Load Capacity Based on the Amount of Cable	3/16" Cable	1/4" Cable
1st Layer (lbs)	800	1200
Mid. Drum (lbs)	800	1120
Full (lbs)	800	850

Winch Speed Based on Load & Cable on the Drum	First Layer	Full
AC, No Load (ft/min)	23	35
AC, Full Load (ft/min)	12	16
DC, No Load (ft/min)	21	33
DC, Full Load (ft/min)	5.5	8



Drum Capacity

3/16" diameter cable=90'

1/4" diameter cable=45'

Pendant/ Power Cord Length

12V DC: 10' Pendant / 25' Power Cord

110V AC: 10' Pendant / 10' Power Cord

Net Weight

OZACW – 22 lbs.

OZDCW – 24 lbs.



Standard - CE



Dimensions – All Models (in)

A	7.4375
B	3.5781
C	10.8125
D	8.1875
E	8.125

Mounting Plate

Mounting Plate Dimensions – All Models (in)

F	3.625	K	.625	P	3
G	8.6875	L	1	Q	.5312
H	1.1875	M	1.25	R	.7812
I	.625	N	1.25	S	.4262
J	1.375	O	1.8125	T	.50

*Dimensions are for reference only and subject to change without notice.

Galvanized and Stainless Steel Wire Rope

OZGAL.19-90	3/16" x 90'	Galvanized cable assembly
OZSS.19-90	3/16" x 90'	Stainless Steel cable assembly
OZGAL.25-45	1/4" x 45'	Galvanized cable assembly
OZSS.25-45	1/4" x 45'	Stainless Steel cable assembly

COMPOZITE DAVIT CRANE

Individually tested and certified at 125%



OZ1200DAV
[PATENTED]

Boom Weight
43lbs.

Mast Weight
30lbs.

1200 lbs. Capacity

Features

• Boom/Extension and Mast made of Advanced Composite Material

- Light weight, about 40% lighter than steel
- Corrosion resistant
- Metal components mil-spec zinc plated
- External handle helps rotate crane under load
- 4 position boom
- Ratchet screw jack adjusts boom under load giving you infinite range of lift
- 360 degree rotation of crane on sleeve bearing
- No tools required for installation
- DIN-Rated hand winch equipped standard with a load holing weatherproof Weston brake (Cable assembly sold separately)
- Hand winch accepts two different cable termination points: swaged ball fitting or bare end cable
- Quick connect winch handle with power drill adapter included
- Pedestal or Socket bases sold separately (comes with mounting template)
- Smart Latch technology at boom/mast connection

*AC and DC power winches available. See page 19.

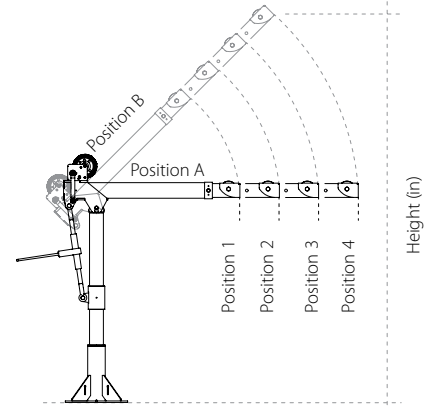
*Refer to page 24 for base options

OZPED1 base shown
See available bases on page 24
*Bases sold separately



Crane weighs only 83 lbs.

One person set up.
No tools required for installation.
Portable ultra lightweight.



Reach (in)

Height (in)

Pedestal Base Boom Position A:

Boom Position 1: Height 50 Reach 36

Boom Position 2: Height 50 Reach 46

Boom Position 3: Height 50 Reach 56

Boom Position 4: Height 50 Reach 66

Pedestal Base Boom Position B:

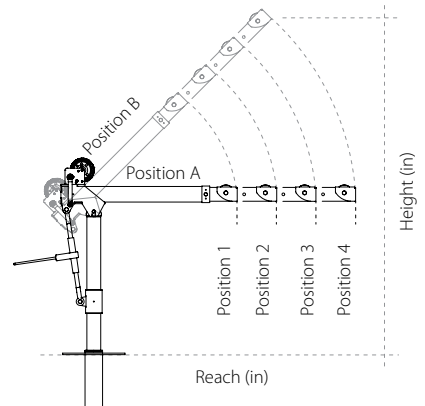
Boom Position 1: Height 74 Reach 22

Boom Position 2: Height 81 Reach 29

Boom Position 3: Height 88 Reach 36

Boom Position 4: Height 95 Reach 43

*Dimensions are for reference only and subject to change without notice.



Reach (in)

Height (in)

Steel Wire Rope (For manual winch)

OZGAL.19-80B	3/16" x 80'	Galvanized cable assembly
OZSS.19-80B	3/16" x 80'	Stainless steel cable assembly
OZGAL.25-55B	1/4" x 55'	Galvanized cable assembly
OZSS.25-55B	1/4" x 55'	Stainless steel cable assembly

All cable assemblies come with swaged ball and swivel hook with latch. **Custom cable length available.**
3/16" - 80 ft max. length • 1/4" - 55ft max. length

Steel Wire Rope (For manual and power winch)

OZGAL.19-90	3/16" x 90'	Galvanized cable assembly
OZSS.19-90	3/16" x 90'	Stainless Steel cable assembly
OZGAL.25-45	1/4" x 45'	Galvanized cable assembly
OZSS.25-45	1/4" x 45'	Stainless Steel cable assembly

All cable assemblies come with swaged ball and swivel hook with latch. **Custom cable length available.**
3/16" - 90 ft max. length • 1/4" - 45ft max. length

Socket Base Boom Position A:

Boom Position 1: Height 37 Reach 36

Boom Position 2: Height 37 Reach 46

Boom Position 3: Height 37 Reach 56

Boom Position 4: Height 37 Reach 66

Socket Base Boom Position B:

Boom Position 1: Height 61 Reach 22

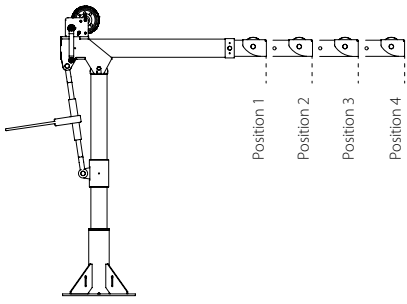
Boom Position 2: Height 68 Reach 29

Boom Position 3: Height 75 Reach 36

Boom Position 4: Height 82 Reach 43

*Dimensions are for reference only and subject to change without notice.





Load Ratings OZ1200DAV

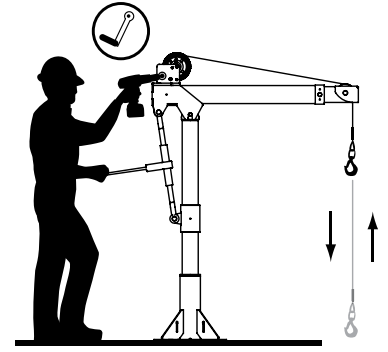
*Table based on 1/4 inch wire rope. 3/16" cable will be lower.

Load Ratings	1st. Layer	Mid. Drum	Full Drum
Position 1 (lbs)	1200	875	550
Position 2 (lbs)	900	875	550
Position 3 (lbs)	700	700	550
Position 4 (lbs)	400	400	400

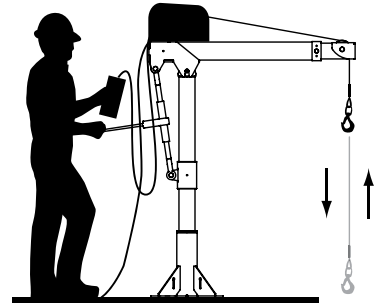
3/16" Cable (ft)	Boom Position 1 (lbs)	Boom Position 2 (lbs)	Boom Position 3 (lbs)	Boom Position 4 (lbs)
6	800	800	700	400
14	800	800	700	400
22	800	800	700	400
31	800	800	700	400
41	775	775	700	400
52	725	725	700	400
64	650	650	650	400
77	625	625	625	400
90	550	550	550	400

1/4" Cable (ft)	Boom Position 1 (lbs)	Boom Position 2 (lbs)	Boom Position 3 (lbs)	Boom Position 4 (lbs)
4	1200	900	700	400
9	1025	900	700	400
14	875	875	700	400
20	775	775	700	400
27	700	700	700	400
35	625	625	625	400
43	575	575	575	400
50	550	550	550	400

Options for faster lowering and raising



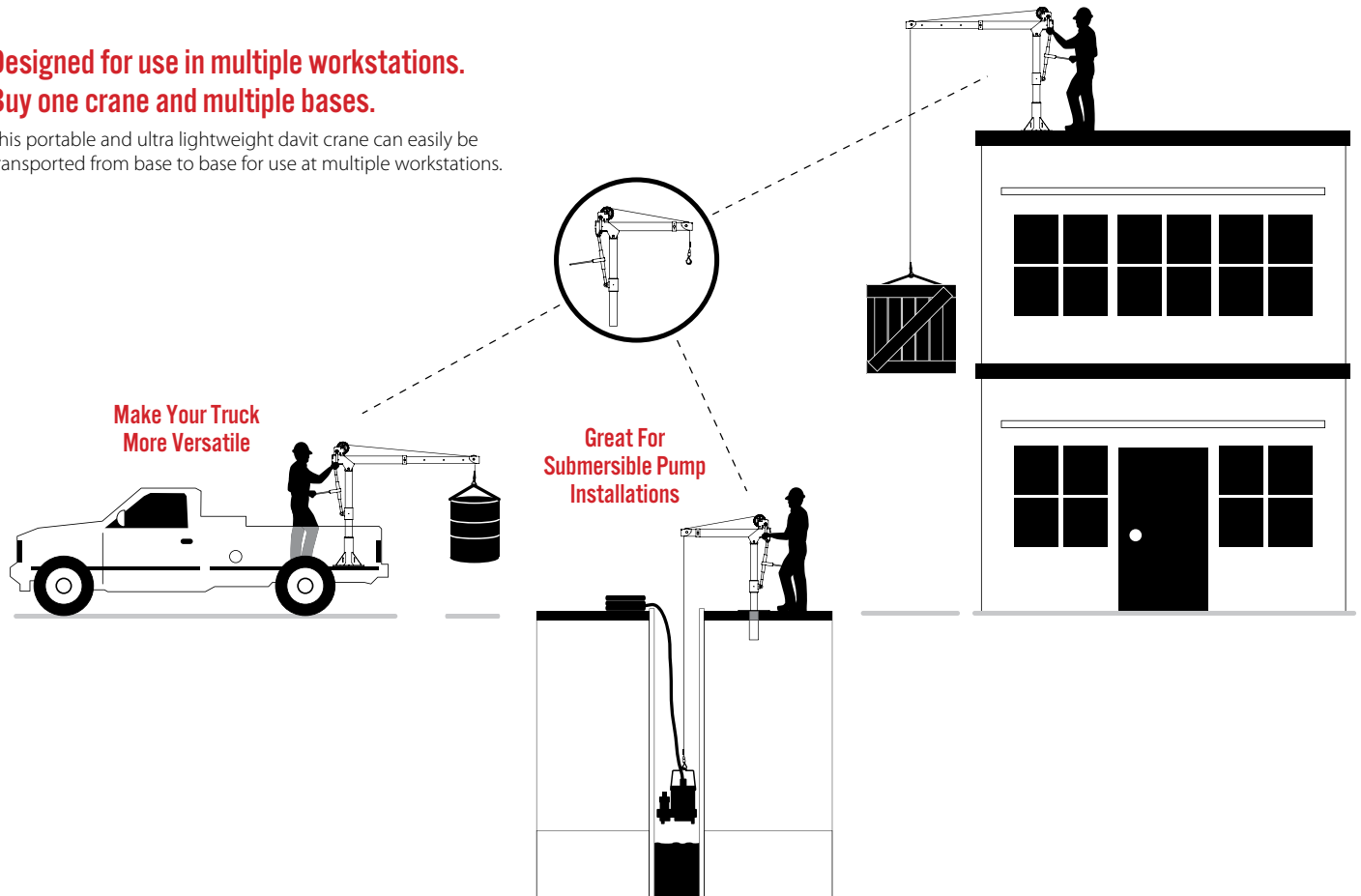
Detach winch handle for drill option.



AC and DC power winches available.
See page 19.

Designed for use in multiple workstations. Buy one crane and multiple bases.

This portable and ultra lightweight davit crane can easily be transported from base to base for use at multiple workstations.



Make Your Truck More Versatile

Great For Submersible Pump Installations

COMPOZITE ELITE DAVIT CRANE

Individually tested and certified at 125%



NEW!

OZCF1200DAV

Boom Weight
18lbs.

Crane
weighs
only
37 lbs.

1200 lbs. Capacity

Features

- Carbon fiber / High-strength aluminum construction
- Corrosion Resistant Finish
- Truly Portable Design
- One-Person Assembly (No Tools Needed)
- Manual Din rated CE winch with brake. Includes power drill adaptor
- Synthetic Cable Assembly Available

*AC and DC power winches available. See page 19.

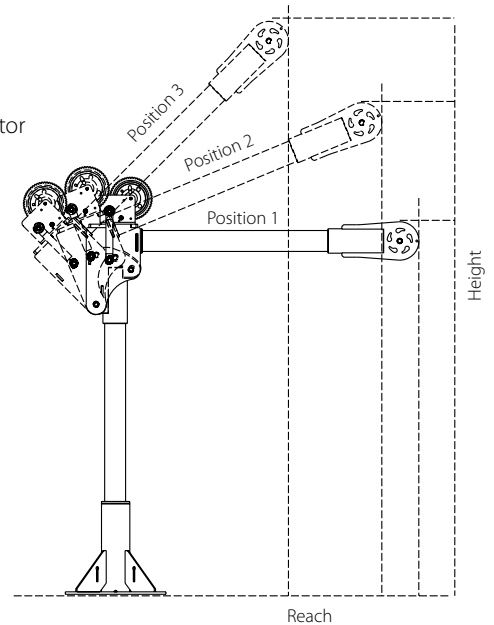
*Refer to page 24 for base options

Load Ratings (lbs.)

*OZCF1200DAV based on 1/4" wire rope.

	1st. Layer	Mid. Drum	Full Drum
Position 1 (0°)	500	500	500
Position 2 (+22.5°)	700	700	550
Position 3 (+45°)	1200	875	550

Introducing the world's most innovative davit cranes. Utilizing carbon fiber our CompOZite Elite Davit Cranes are pound for pound the lightest and strongest in the market.



Position 1, Height 46", Reach 42"

Position 2, Height 62", Reach 32"

Position 3, Height 74", Reach 20"

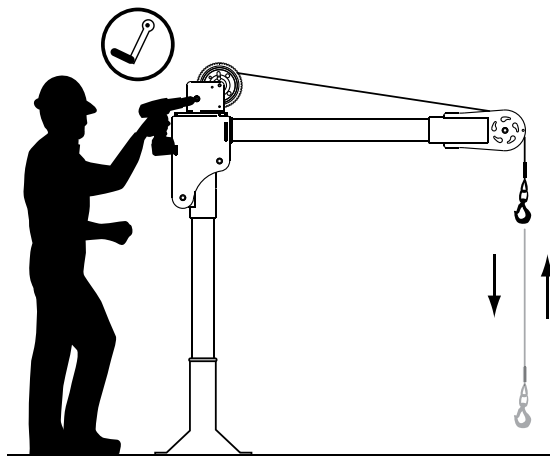
Mast Weight
13lbs.

2500 lbs.
CompOZite Elite
Davit Crane
Coming Soon!

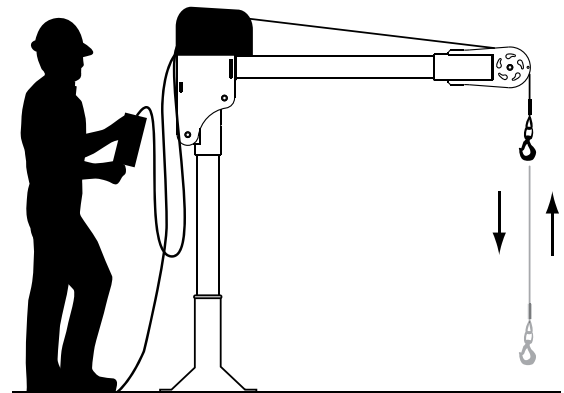
OZPED2 base shown
See available bases on page 24
*Bases sold separately



Options for faster lowering and raising



Detach winch handle for drill option.



AC and DC power winches available. See page 19.

STEEL DAVIT CRANE

Individually tested and certified at 125%



OZ1000DAV

500 lbs., 1000 lbs. and 2500 lbs. Capacity

Features

- 360 degree rotation
- 4 different boom height adjustments
- 500, 1000, and 2500 lb. ratings available
- Manual Din rated CE winch with brake. Includes power drill adaptor
- Zinc plated finish
- AC & DC winch option
- Pedestal or Socket bases sold separately (comes with mounting template)
- Made in USA



*AC and DC power winches available. See page 19.

*Refer to page 24 for base options

Load Ratings

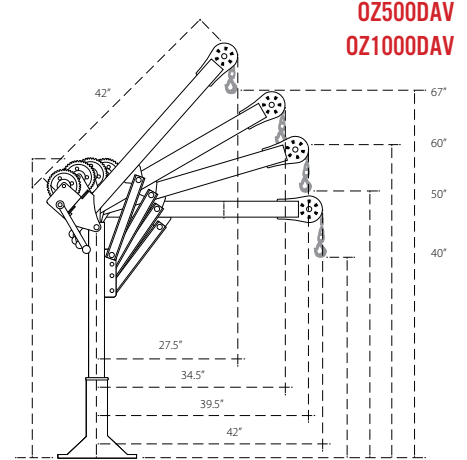
*OZ500DAV based on 3/16" wire rope.

*OZ1000DAV based on 1/4" wire rope.

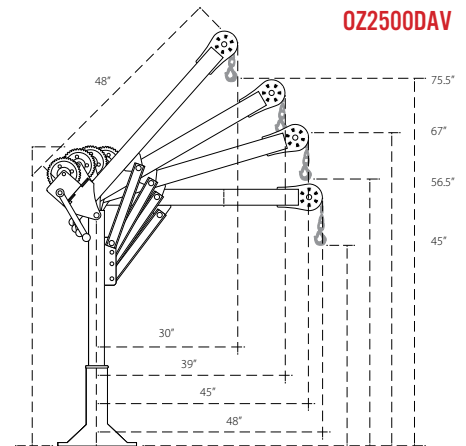
*OZ2500DAV based on 3/8" wire rope.

	1st. Layer	Mid. Drum	Full Drum
OZ500DAV (lbs)	500	500	500
OZ1000DAV (lbs)	1000	875	550
OZ2500DAV (lbs)	2500	2000	1550

OZPED2 base shown
See available bases on page 24
*Bases sold separately



OZ500DAV
OZ1000DAV



OZ2500DAV

Steel Wire Rope (For manual winch)

OZGAL.19-80B	3/16" x 80'	Galvanized cable assembly
OZSS.19-80B	3/16" x 80'	Stainless steel cable assembly
OZGAL.25-55B	1/4" x 55'	Galvanized cable assembly
OZSS.25-55B	1/4" x 55'	Stainless steel cable assembly

All cable assemblies come with swaged ball and swivel hook with latch. **Custom cable length available.**
3/16" - 80 ft max. length • 1/4" - 55ft max. length

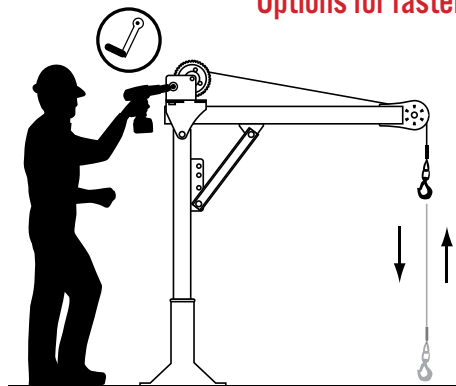
Steel Wire Rope (For manual and power winch)

OZGAL.19-90	3/16" x 90'	Galvanized cable assembly
OZSS.19-90	3/16" x 90'	Stainless Steel cable assembly
OZGAL.25-45	1/4" x 45'	Galvanized cable assembly
OZSS.25-45	1/4" x 45'	Stainless Steel cable assembly

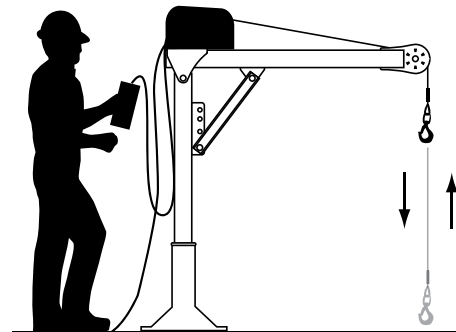
All cable assemblies come with swaged ball and swivel hook with latch. **Custom cable length available.**
3/16" - 90 ft max. length • 1/4" - 45ft max. length



Options for faster lowering and raising



Detach winch handle for drill option.



AC and DC power winches available. See page 19.

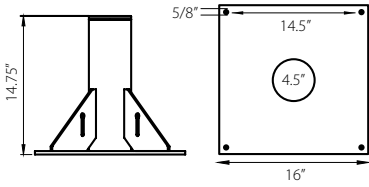
DAVIT CRANE MOUNTING BASES (Sold Separately)

*Includes mounting template

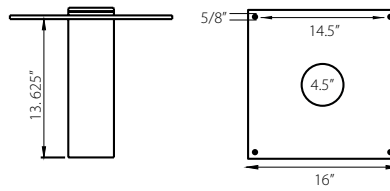


COMPOZITE DAVIT CRANE - OZ1200DAV

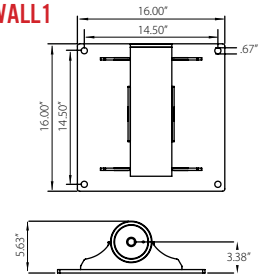
OZPED1



OZSOC1

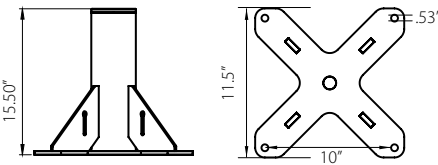


OZWALL1

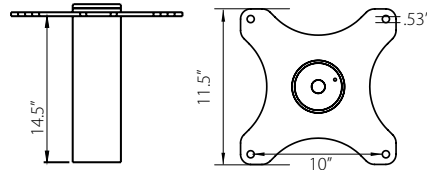


COMPOZITE ELITE DAVIT CRANE - OZCF1200DAV

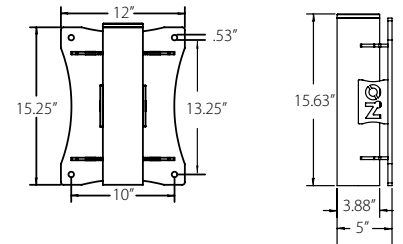
OZPED2



OZSOC2

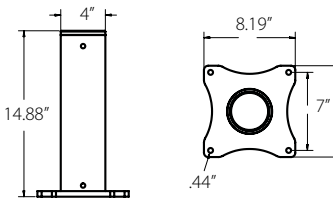


OZWALL2

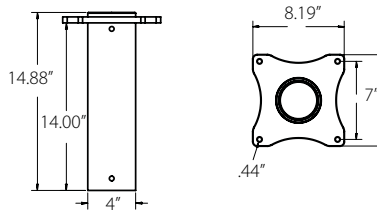


STEEL DAVIT CRANE - OZ500DAV

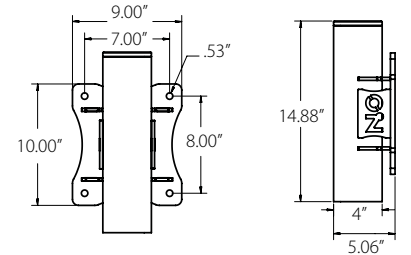
OZPED3



OZSOC3

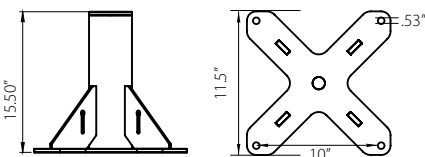


OZWALL3

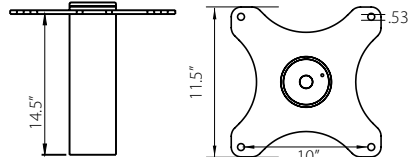


STEEL DAVIT CRANE - OZ1000DAV

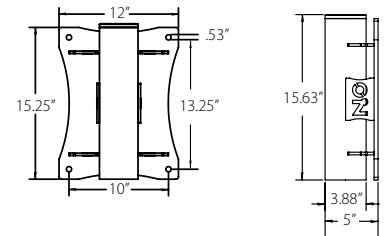
OZPED2



OZSOC2

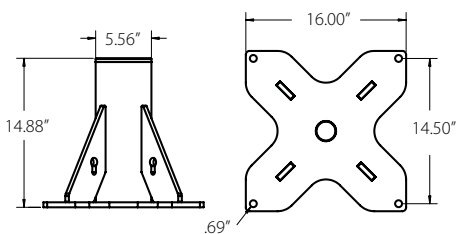


OZWALL2

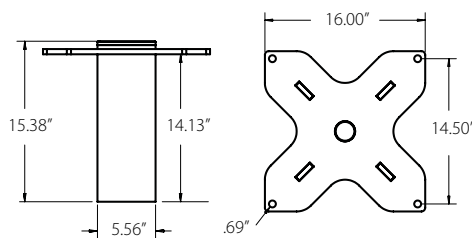


STEEL DAVIT CRANE - OZ2500DAV

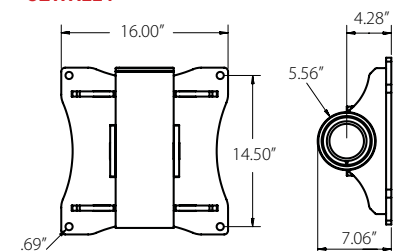
OZPED4



OZSOC4



OZWALL4





APPLICATION DATA SHEET DAVIT CRANES

P.O. Box 845 | Winona, MN 55987
 Tf: (800) 749-1064 | Ph: (507) 474-6250 | Fx: (507) 452-5217
 sales@ozliftingproducts.com | www.ozliftingproducts.com

To: _____ Fax: _____ # of Pages: _____ Date: _____
 Email Address: _____
 Contact: _____
 Address: _____
 City: _____ State: _____
 Phone: _____ Zip Code: _____
 Fax: _____

Please fill out separate data sheets for each application that the product is used.

1. JOB DESCRIPTION:

Quantity Needed: _____ Date Needed: _____

2. WEIGHT OF LOAD:

3. HOW FAR IS THE LOAD MOVING?:

4. REACH REQUIREMENTS:

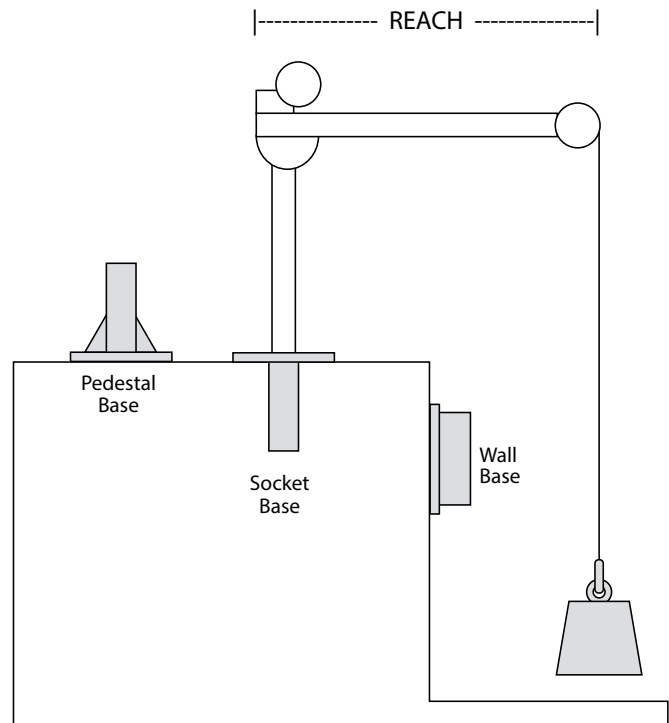
5. WINCH REQUIREMENTS:

Hand 115 volt AC 12 volt DC

6. BASE REQUIREMENTS:

Pedestal Base Socket Base Wall Mount Base
 Base Extension

7. ENVIRONMENT:



*Base installation is purchaser's responsibility.
 OZ Lifting recommends consulting a civil
 engineer or other qualified professional.*

HOW DID YOU HEAR OF US?

Individually tested and certified at 125%. Cable and bases sold separately.

OZ Lifting products are not for lifting up people or objects over people.

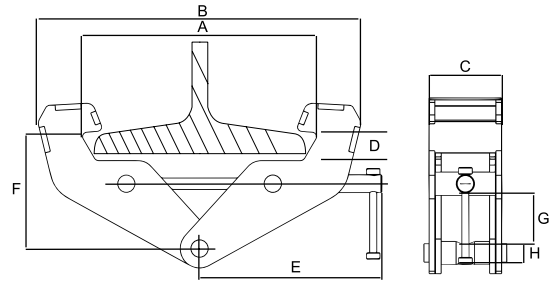
OZ BEAM CLAMP USA



OZ1BCA-MR

Features

- Robust all-steel fully-welded construction
- Super-quick adjustment to most I-Beams (see measurements below)
- ROHS compliant zinc plated finish
- Permanent engraved load rating
- Made in USA



Standards:

This product meets or exceeds OSHA 1926 Subpart M, OSHA 1910.140, ANSI Z359.1, and ANSI A10.32-2012 standards for fall protection.

	OZ1BCA-MR	OZ2BCA-MR	OZ3BCA-MR	OZ5BCA-MR	OZ10BCA-MR	
Safe Working Load (lbs)	2,000	4,000	6,000	10,000	20,000	
Fall Protection* (lbs)	400	400	400	400	400	
Dimensional Information (in)	A	3 – 8	3 – 8	3.5 – 13	3.5 – 13	
	B	14.75	14.75	20.5	22	
	C	2.51	2.91	3.94	4.41	4.72
	D	0.9	0.9	1.5	1.5	1.6
	E	9.5	9.5	11	11	11.5
	F	4.75 – 5.75	4.75 – 5.75	7.5 – 9	7.5 – 9	5.5 – 9.375
	G	1.75	1.75	2.5	2.5	4
	H	.75	.875	.975	1.125	1.625
Net Weight (lbs)	9	11	22	26	39	

*Dimensions are for reference only and subject to change without notice.



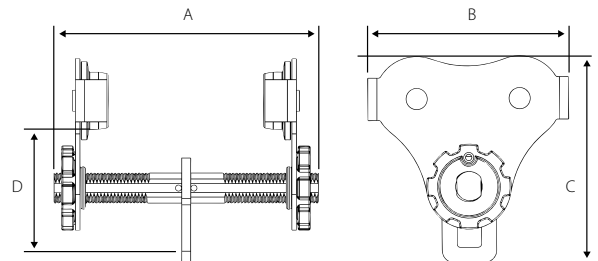
OZ PUSH BEAM TROLLEY USA



OZ1PBTA-MR

Features

- Fall protection 400 lbs.*
- Fast and easy width adjustments
- Built-in width adjustment indicator
- Universal wheel tread fits most I, S, and W-Beams
- Premium double-sealed ball bearings
- ROHS compliant zinc plated finish
- Anti-drop plates
- Glow in the dark decals
- Ships fully assembled
- Made in USA



Standards:

This product meets or exceeds OSHA 1926 Subpart M, OSHA 1910, ANSI Z359.1-2007, and ANSI A10.32-2012 standards for fall protection.

PRODUCT CODE	OZ05PBTA-MR	OZ1PBTA-MR
Safe Working Load (lbs)	1,000	2,000
Fall Protection* (lbs)	400	400
Adjustable Flange Width (in)	2.75-8.00	2.75-8.00
Max Flange Thickness (in)	1.12	1
Product Dimensions (in)	A	11
	B	8.30
	C	8.50
	D	5.00
Minimum Radius Curve (ft)	2.75	3.35
Net Weight (lbs)	16	26

*Dimensions are for reference only and subject to change without notice.





800.749.1064
ozliftingproducts.com



Corporate Office:

OZ Lifting Products
5455 W 6th St.
Goodview, MN 55987
Tf: (800) 749-1064

Sales/Tech Support:

Ph: (507) 474-6250
Tf: (800) 749-1064
Fx: (507) 452-5217
sales@ozliftingproducts.com

Email Orders to:

sales@ozliftingproducts.com

Payment Remit to:

OZ Lifting Products
P.O. Box 845
Winona, MN 55987