

TOOLS UNLIMITED

1-800-537-1993

Michigan Pneumatic PDF Section 3

Table of Contents

Index	Page
Aircraft Riveters and Riveter Accessories	2 - 5
Rivet Squeezers and Rivet Squeezer Accessories	5 - 11
Rivet Hammers, Busters & Accessories	12 - 15
POP Blid Riveters	16 - 17
Blind Riveters, Rivet-Nut Tools & Hydraulic Pumps	18
Blind Riveters & Accessories	19
AVK Rivet-Nut Tools	20
Clay Diggers, Demolition Tools & Accessories	21 - 26
Concrete Vibrators & Roto Hammer Accessories	27 - 28
Material Handling	29 - 36
Air Tuggers	37 - 38
Rotary Cutters & Panel Saws	39 - 40
Air Nipper / Trimmer	41
Reciprocating Saws & Files	42 - 43
Chain & Band Saws	44
Metal Shears, Nibblers & Bevelers	45 - 50
Air Line Accessories	51 - 57

Visit us on the web at www.ToolsUnlimited.com

Aircraft Riveters



MP-30XG



NBH-400



MP-20XBU

These rivet hammers are among the most popular for aircraft riveting. Easily controlled, slow, heavy blows deliver just the right impact to form the rivet head without excessively work hardening the rivet or stretching the surrounding metal. Also handy for light chipping, scraping, metal cutting, peening and other hammering applications. All riveters are equipped with quick change and beehive retainer springs and feature removable front bushings.

Most parts are interchangeable with Chicago Pneumatic 2X, 3X, 4X and CP-4444 series riveters.



MP-40X

Model No.	Style	Dural Capacity	Steel Capacity	Bore & Stroke	Blows Per Minute	Shank Diameter	Length w/Retainer	Weight	Air Inlet Thread	Avg. Air Consumption
MP-9501X-SK	Offset Grip	5/32"	1/8"	9/16" x 1-3/8"	2850	0.401	5"	2.20 lbs.	1/4"	4 cfm
MP-2X-ST	Offset Grip	1/8"	3/32"	1/2" x 2-1/4"	2580	0.401	6-11/16"	2.25 lbs.	1/4"	4 cfm
MP-20X	Offset Grip						6-11/16"	2.25 lbs.		
MP-20XBU	Pushbutton						8"	2.00 lbs.		
MP-20XG	Pistol Grip						9-3/16"	3.88 lbs.		
MP-3X-ST	Offset Grip	3/16"	5/32"	1/2" x 2-7/8"	2160	0.401	7-5/16"	2.30 lbs.	1/4"	4 cfm
MP-30X	Offset Grip						7-5/16"	2.30 lbs.		
MP-30XBU	Pushbutton						8-5/8"	2.50 lbs.		
MP-30XG	Pistol Grip						10-13/16"	4.00 lbs.		
MP-4X-ST	Offset Grip	1/4"	3/16"	1/2" x 3-1/16"	1740	0.401	8-5/16"	2.75 lbs.	1/4"	4 cfm
MP-40X	Offset Grip						8-5/16"	2.75 lbs.		
MP-40XBU	Pushbutton						9-5/8"	2.50 lbs.		
MP-40XG	Pistol Grip						10-13/16"	4.50 lbs.		
NBH-400	Offset Grip	1/4"	3/16"	1/2" x 3-3/4"	1600	0.401	8-3/4"	3.10 lbs.	1/4"	4 cfm

Optional Handles



Offset Grip



Pushbutton



Pistol Grip
(Gocsnick)

See pages 102-103 for aircraft riveter accessories.

Aircraft Riveters



MP-50X



NBH-600A



MP-90XG



MP-70X

These rivet hammers are among the most popular for aircraft riveting. Easily controlled, slow, heavy blows deliver just the right impact to form the rivet head without excessively work hardening the rivet or stretching the surrounding metal. Also handy for light chipping, scraping, metal cutting, peening and other hammering

applications. All riveters are equipped with quick change and beehive retainer springs and feature removable front bushings. **Most parts are interchangeable with Chicago Pneumatic 5X, 7X, 9X and CP-4447 series riveters.** A 0.401 shank bushing, part no. HG-50215.401, also available for all 0.498 shank tools below.

Model No.	Style	Dural Capacity	Steel Capacity	Bore & Stroke	Blows Per Minute	Shank Diameter	Length w/ Retainer	Weight	Air Inlet Thread	Avg. Air Consumption
MP-5X-ST MP-50X MP-50XG	Offset Grip Offset Grip Pistol Grip	1/4"	1/4"	3/4" x 2-11/16"	1560	0.498	8-15/16" 8-15/16" 12-3/4"	4.75 lbs. 4.75 lbs. 7.00 lbs.	1/4"	6 cfm
MP-70X MP-70XG	Offset Grip Pistol Grip	3/8"	5/16"	3/4" x 5-13/16"	900	0.498	11-15/16" 14-1/2"	6.00 lbs. 8.25 lbs.	1/4"	6 cfm
NBH-600A	Offset Grip	5/16"	1/4"	3/4" x 2-11/16"	1500	0.498	9-5/8"	4.40 lbs.	1/4"	6 cfm
MP-90X MP-90XG	Offset Grip Pistol Grip	5/16"	1/4"	3/4" x 3-7/8"	1400	0.498	9-15/16" 12-1/2"	5.13 lbs. 7.25 lbs.	1/4"	6 cfm

Needle Scaler Attachment

For standard 0.498" shank riveters.
3mmx12 Replacement Needles



NA-60

Nail Driving Attachments

Ideal for dry dock construction, retaining wall construction, decks, fences and beam construction. Designed to increase production while reducing operator fatigue.



P042448



SD60-149A



P047810

Model No.	Shank Diameter	Max. Nail Head Diameter	Retainer Type	Length	Weight
P042448		9/16"	Double Spring	2-3/8"	1.13 lbs.
SD60-149A	0.498	3/4"	Solid Steel w/Nylon Insert	2-3/8"	1.00 lb.
P047810		7/8"	Double Spring	2-3/4"	1.25 lbs.

See pages 102-103 for air hammer and riveting accessories.

Riveter & Air Hammer Accessories

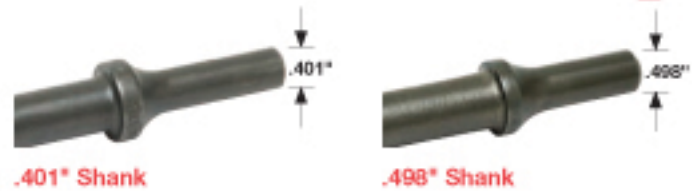


Michigan Pneumatic

Heavy-Duty Industrial Quality Chisels

For .401 & .498 Shank Riveting Hammers

For all air hammers, light riveting hammers, panel cutters and zip guns with .401 and .498 Parker taper shanks. Made of high grade alloy steel and heat treated for extremely durable service.



Description	Specify Shank Size	.401	.498	Description	Specify Shank Size	.401	.498
7" Chisel Blank		913	963	Scraper		905	955
7" Flat Chisel		910	960	Body Ripper		907	-
11" Flat Chisel		910-11FC	960-12	Tapered Punch		911	961
Moil Point		940	2P21	Spoon Chisel		922	-
1-1/2" Wide Chisel		910-1.50	960-1.50	Tie Rod Tool		901TR	965TR
Muffler Cutter		908	-	Bushing Remover		904	-
Arvin Muffler Cutter		501	-	Bushing Cutter & Splitter		906	964
Single Bladed Panel Cutter		923PC	-	Shock Absorber		436	-
Double Bladed Panel Cutter		909	959	Body Forming Tool		2N181	-
Spot Weld Breaker		914	-	Rivet & Bolt Cutter		912	962
Tail Pipe Cutter		902TP	-	Fork Chisel		903-1	968FC

*Please specify size required.

Non-Sparking .401" Shank Chisels

Beryllium copper safety chisels used for scraping and cutting applications where flammable vapors or residues are present.

Model 910-2-BC
Wide Chisel



Model 909-BC
Panel Cutter



Michigan Pneumatic

Retainer Springs



Beehive



Quick Change

Style	Fits Most .401 Shank	Fits Most .498 Shank	Fits CP9311, CP9314, CP711, CP714, CP715	Fits AVC26, AVC10-13	Fits Cleco G4, G6, G8
Beehive	895	898	-	-	899
Quick Change	897	896	A046094	897-TW	-

See pages 101 & 103 for additional air hammer and riveting accessories.



Riveter & Air Hammer Accessories

.401" Shank Rivet Sets

Straight Type

Part No.	"L"
SM10	3-1/2"
SM11	5-1/2"
SM12	7-1/2"
SM13	10-1/2"
SM14	13-1/2"
SM50	3-1/2"



For example, to order: 3-1/2" Long; 3/16" Flat
Specify: SM10-4426

Description	Rivet Diameter						SM50		
	1/16"	3/32"	1/8"	5/32"	3/16"	1/4"	1/4"	5/16"	3/8"
Round AN430	4302	4303	4304	4305	4306	4308	-	43010	43012
Flat AN442	4422	4423	4424	4425	4426	4428	-	44210	44212
Brazier AN455	4552	4553	4554	4555	4556	4558	4558	45510	45512
Mod. Brazier AN456	4562	4563	4564	4565	4566	4568	-	45610	45612
Universal AN470	4702	4703	4704	4705	4706	4708	-	47010	47012
Button AN435	4352	4353	4354	4355	4356	4358	-	43510	43512

.498" Shank Rivet Sets

Part No.	"L"
SM30	3-1/2"
SM31	5-1/2"
SM32	7-1/2"
SM70	3-1/2"



For example, to order: 3-1/2" Long; 5/32" Universal
Specify: SM30-4705

Description	Rivet Diameter					SM70		
	3/32"	1/8"	5/32"	3/16"	1/4"	1/4"	5/16"	3/8"
Round AN430	4303	4304	4305	4306	4308	-	43010	43012
Flat AN442	4423	4424	4425	4426	4428	-	44210	44212
Brazier AN455	4553	4554	4555	4556	4558	4558	45510	45512
Mod. Brazier AN456	4563	4564	4565	4566	4568	-	45610	45612
Universal AN470	4703	4704	4705	4706	4708	-	47010	47012
Button AN435	4353	4354	4355	4356	4358	-	43510	43512

Flush Sets



0.401" Shank	0.498" Shank	Diameter	Length
SM90	-	1"	2-1/2"
SM91	SM101	1"	3"
SM92	SM102	1"	5-1/2"
SM93	-	1"	7-1/2"
SM94	SM104	1-1/4"	3"
SM95	-	1-1/4"	5-1/2"
SM96	SM106	1-1/2"	3-1/8"
SM97	SM107	1-3/4"	3-1/4"
SM98	SM108	1-1/8"	2-1/4"
SM99	-	1-1/4"	2-1/4"

Some rivet/flush sets may require a six-piece minimum order. Please call for availability.

.498" to .401" Shank Adapter

For use with 0.498" riveters. This tool makes rivet set inventories interchangeable.

Model
MM1951



Quick Change Safety Retainer

- Safe, fast and easy
- Industry's most popular chisel retainer

The retainer becomes a part of the tool and eliminates the expense and trouble of beehive and quick change springs. Accepts non-tum and tum type tools. **Please specify make and model number of hammer when ordering.**

- 0.401 Shank:**
0111 Automotive quality
3300 Industrial quality
- 0.498 Shank:**
3200 Industrial quality



Model
3300-10

Safety Chuck Chisel Holder

New safety feature fits all .401 pneumatic hammers. Tighten chisel holder to lock the chisel firmly in place. Loosen the chisel holder to allow quick change of chisels.

Model
5130



Needle Scaler Attachment

For most standard 0.401" shank air hammers.
3mmx19 Replacement Needles

Model
SA0204RNS



Part No.	Shank	Fits Tool
0111	0.401	Fits most Michigan Pneumatic models except MP-1010-F & MP-1020-F
3300-1	0.401	All American Pneumatic, Desouter & Superior, Ingersoll-Rand 121, 132, 772, AV10-12-13, Sioux 270-272
3300-9	0.401	Chicago Pneumatic 9311-9315, 711-715, 2X-4X, 4444, Cleco E3-E4-E15-E16, Craftsman 18800, All Dayton, Ingersoll-Rand 115, 116, 117,
3300-10	0.401	All Florida Pneumatic, Snap-On PH45-PH50
3300-U	0.401	Chicago Pneumatic 9311-9315, 711-715, Cleco E3-E4-E15-E16, Craftsman 18800, All Dayton, Ingersoll-Rand 115, 116, 117, Snap-On PH45-PH50, All Florida Pneumatic
3200-1	0.498	Ingersoll-Rand AVC-26
3200-3	0.498	Chicago Pneumatic 4447-717, 5X-9X

Rivet Squeezers



Michigan Pneumatic

"Alligator" Yoke Riveters

Alligator type compression riveter has wide applications in many industries for squeezing a large variety of size and type of rivets. Strong squeeze action is easily controlled to provide uniformity and accuracy of work. Ideally used for dimpling, punching and pressing. Extra powerful, portable tandem cylinder also available with double the compressive force for larger riveting capacity. **Parts are interchangeable with Chicago Pneumatic 0214-A series riveters.**



Model MP-2144A-112



Model MP-2144A-TAN-3



Compression Riveters, "Alligator" Yoke

Model No.	Rivet Capacity		Yoke Reach	Yoke Gap	Closed Height	Shank Diameter	Max. Force	Max. Travel	Length	Weight w/Yoke
	Alum.	Steel								
MP-2144A-112	1/8"		1-1/2"	1-5/8"			3000 lbs.	5/8"	9-3/16"	3.75 lbs.
MP-2144A-214	1/8"	3/32"	2-1/4"	2-1/8"	7/8"	0.187"	2200 lbs.	7/8"	10-1/8"	4.25 lbs.
MP-2144A-3	3/32"		3"	2-1/8"			1800 lbs.	1-1/4"	10-7/8"	4.75 lbs.

Tandem Compression Riveters, "Alligator" Yoke

Model No.	Rivet Capacity		Yoke Reach	Yoke Gap	Closed Height	Shank Diameter	Max. Force	Max. Travel	Length	Weight w/Yoke
	Alum.	Steel								
MP-2144A-TAN-112	3/16"	5/32"	1-1/2"	1-5/8"			6000 lbs.	5/8"	12"	5.50 lbs.
MP-2144A-TAN-214	5/32"	1/8"	2-1/4"	2-1/8"	7/8"	0.187"	4300 lbs.	7/8"	13"	6.00 lbs.
MP-2144A-TAN-3	1/8"	3/32"	3"	2-1/8"			3400 lbs.	1-1/4"	13-3/4"	6.25 lbs.

Michigan Pneumatic

"C" Yoke Riveters

Specially designed for airplane construction to ensure fast, economical riveting where two-man operation is impractical. Features strong, steady, silent squeeze action, which is easily controlled for a large variety of rivets. Ideal for dimpling, punching, stamping and pressing. Widely used for truck, bus and automotive applications. Extra powerful, portable tandem cylinder also available with double the compressive force for larger riveting capacity. **Parts are interchangeable with Chicago Pneumatic 0214-C series riveters.**



Model MP-2144C-112



Model MP-2144C-TAN-112



Compression Riveters, "C" Yoke

Model No.	Rivet Capacity		Yoke Reach	Yoke Gap	Closed Height	Shank Diameter	Max. Force	Max. Travel	Length	Weight w/Yoke
	Alum.	Steel								
MP-2144C-112			1-1/2"							
MP-2144C-2	1/8"	3/32"	2"	1-1/4"	11/16"	0.187"	3000 lbs.	9/16"	10-5/16"	4.5 lbs.
MP-2144C-212			2-1/2"							
MP-2144C-3			3"							

Tandem Compression Riveters, "C" Yoke

Model No.	Rivet Capacity		Yoke Reach	Yoke Gap	Closed Height	Shank Diameter	Max. Force	Max. Travel	Length	Weight w/Yoke
	Alum.	Steel								
MP-2144C-TAN-112			1-1/2"							
MP-2144C-TAN-2	3/16"	5/32"	2"	1-1/4"	11/16"	0.187"	6000 lbs.	9/16"	14"	5.5 lbs.
MP-2144C-TAN-212			2-1/2"							
MP-2144C-TAN-3			3"							

Rivet Squeezers



Michigan Pneumatic

"Alligator" Yoke Riveters

Designed for one-man operation to increase productivity where costly two-man riveting was once done. Used in high volume riveting applications. Capable of accurately squeezing a large variety of solid, tubular and semi-tubular rivets in aircraft, truck, bus, boat, toy and automotive component applications. A tandem cylinder doubles the compressive force of the standard tool, allowing the operator to upset larger size rivets, as well as rivets made of stronger material. **All models: Plain backhead; 1/4" (NPTF) air inlet thread. MP-351: Short stroke adjustment; CR-1 rivet shank holes. Model 351FCT08 foot pedal control available.**



MP-351A-278



Compression Riveters, "Alligator" Yoke

Model No.	Rivet Capacity		Yoke Reach	Yoke Gap	Closed Height	Shank Diameter	Max. Force	Max. Travel	Length	Weight w/Yoke
	Alum.	Steel								
MP-351A-918	1/8"	3/32"	9-1/8"	2-3/16"	3/4"	0.187"	3000 lbs.	1-11/16"	25-3/4"	26.25 lbs.
MP-351A-7	1/8"	3/32"	7"	2"	1-1/2"		3000 lbs.	1-11/16"	23-5/8"	24.25 lbs.
MP-351A-5	1/8"	3/32"	5"	1-5/8"	7/8"		3400 lbs.	1-3/8"	21-5/8"	19.75 lbs.
MP-351A-278	5/32"	1/8"	2-7/8"	1-5/8"	7/8"		5200 lbs.	5/8"	19-1/2"	15.75 lbs.

Tandem Compression Riveters, "Alligator" Yoke

Model No.	Rivet Capacity		Yoke Reach	Yoke Gap	Closed Height	Shank Diameter	Max. Force	Max. Travel	Length	Weight w/Yoke
	Alum.	Steel								
MP-351A-TAN-918	3/16"	5/32"	9-1/8"	2-3/16"	3/4"	0.187"	6000 lbs.	1-11/16"	30"	29.00 lbs.
MP-351A-TAN-7	3/16"	5/32"	7"	2"	1-1/2"		6000 lbs.	1-11/16"	27-7/8"	27.00 lbs.
MP-351A-TAN-5	3/16"	5/32"	5"	1-5/8"	7/8"		6800 lbs.	1-3/8"	25-7/8"	22.50 lbs.
MP-351A-TAN-278	1/4"	3/16"	2-7/8"	1-5/8"	7/8"		10400 lbs.	5/8"	23-3/4"	18.50 lbs.

Michigan Pneumatic

"C" Yoke Riveters

Lightweight, compact, used extensively in electronic chassis, metal furniture, aircraft, automotive component, boat, truck and bus building applications. Can also be used for staking, stamping, pressing or crimping service. Air inlet swivel aids maneuverability. Squeezes uniformly every time trigger is actuated, independent of operator skill. Using a compressing tool ensures all joints are of the highest integrity. **All models: Plain backhead; 1/4" (NPTF) air inlet thread. CR-1 rivet shank holes; MP-351: Short stroke adjustment. Model 351FCT08 foot pedal control available.**



MP-351C-218



Compression Riveters, "C" Yoke

Model No.	Rivet Capacity		Yoke Reach	Yoke Gap	Closed Height	Shank Diameter	Max. Force	Max. Travel	Length	Weight w/Yoke
	Alum.	Steel								
MP-351C-218	3/16"	5/32"	2-1/8"	1-3/16"	25/32"	0.187"	6000 lbs.	9/16"	17-1/2"	12.50 lbs.

Tandem Compression Riveters, "C" Yoke

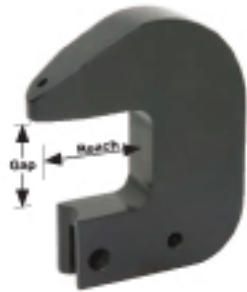
Model No.	Rivet Capacity		Yoke Reach	Yoke Gap	Closed Height	Shank Diameter	Max. Force	Max. Travel	Length	Weight w/Yoke
	Alum.	Steel								
MP-351C-TAN-218	1/4"	7/32"	2-1/8"	1-3/16"	25/32"	0.187"	12000 lbs.	9/16"	21-3/4"	15.25 lbs.

Rivet Squeezer Accessories



MP-351C & CP-0351 Series "C" Yokes

Fits standard Type 1 frame.



No.	Reach	Gap
016	1-3/16"	2-5/8"
017	3-1/2"	1-1/4"
018	2"	2"
019	5"	2-1/2"
020	2-1/8"	1-3/16"

CP-0355 Series "C" Yokes

Includes bronze set holder bushings.

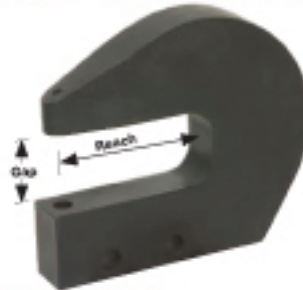


No.	Reach	Gap
P089777	2-1/8"	1-7/8"
P093213	4-1/2"	1-15/16"

MP-2144C & CP-0214 Series "C" Yokes

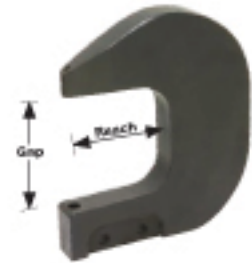


No.	Reach	Gap
001	1-1/2"	1-1/4"
002	2"	1-1/4"
003	2-1/2"	1-3/8"
004	3"	1-3/8"
005	2-3/4"	1-3/16"
006	1-3/4"	1-1/4"
007	1-3/16"	1-3/16"
012XP	3"	1-1/2"



Heavy-Duty Model

No.	Reach	Gap
008	3-7/8"	1-3/16"
009	5-5/8"	1-3/16"
010	5-3/8"	1-1/4"



Heavy-Duty Model

No.	Reach	Gap
011	2-1/2"	2"
012	3"	1-1/2"
013	3"	3"
014	3"	3-1/2"
015	3-1/2"	2"

Michigan Pneumatic Model 351CON

Riveter Conversion Unit

Conversion unit fits all "Alligator" or "C" type models MP-351 and CP-0351 compression riveters. Increases rivet capacity from 3/16" Dural to 5/16", and 5/32" steel to 1/4".



Michigan Pneumatic Model 351RY

Roof Top Rail Yoke

Fits MP-351 and CP-0351 "C" series riveters with Type 1 frames. Ideal for installing 3/16" and 1/4" rivets on most tractor trailer roof rails. **Requires at least SM210 flush set for the top of yoke and choice of additional cupped rivet set to be inserted in the moving set holder.**

P003092RY	5/16"-24 Bolt
P073047RY	7/16"-20 Bolt
P003093	5/16"-24 Nylock Nut
P006315	7/16"-20 Nylock Nut



See pages 95-97 for additional accessories.

Rivet Squeezer Accessories



Air-Operated Pedal Control

Converts standard lever-operated compression riveters to foot-operated for riveting applications where both hands are required to stabilize the product being riveted.



**Model
2144FCT**

Can be installed on the following model riveters: **MP-2144, CP-0214, USI-114** and other riveters of the same design.

Includes a 6' hose assembly from the foot pedal to the back cap.



**Model
351FCT08**

Can be installed on the following model riveters: **MP-351, CP-0351, USI-151** and **APT-740**.

Includes an 8' hose assembly from the foot pedal to the air valve and air intake.



**Model
450FCT**

Can be installed on the following model riveters: **CP-0450** and **USI-150**.

Comes with a 10' hose assembly from the foot pedal to the air valve and a 5' hose assembly from the air valve to the back cap. Includes all necessary hardware to mount the air valve and back cap.



**Model
450EAFCT**

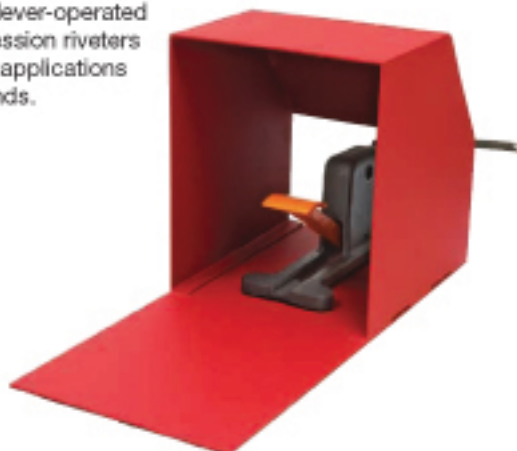
Can be installed on the following model riveters: **CP-0450EA, USI-150EA** and **Zephyr ZP450EA**.

Comes with a 10' hose assembly from the foot pedal to the air valve and a 5' hose assembly from the air valve to the back cap. Includes all necessary hardware to mount the air valve and back cap.

Michigan Pneumatic Model P078666G

Cable-Operated Pedal Control

Allows standard lever-operated CP-0450 compression riveters to foot-operated applications requiring two hands.



Michigan Pneumatic Model P078214G

Cable-Operated Pedal Control

Allows standard lever-operated CP-0351 & CP-0355 compression riveters to foot-operated applications requiring two hands. Includes lever conversion kit.



1. **P074830** Cable Casing Bracket
2. **P074827** Cable Collar
3. **P074831** Throttle Lever

See pages 94 & 96-97 for additional accessories.

Rivet Squeezer Accessories



Michigan Pneumatic Model 2144APS

Air-Operated, Foot-Controlled Pedestal Stand

The 2144APS Pedestal Stand is used with the MP-2144, CP-214, or U.S. 114 Compression Riveters. This Bench Top Stand comes with the 2144FCT Air Foot Pedal Control Assembly that has a 6 ft. hose and has a working height of 12". This provides a hands-free option where components require both hands for stability.



Riveter not included.

Michigan Pneumatic Model 351APS

Air-Operated, Foot-Controlled Pedestal Stand

The 351APS pedestal stand is used with the CP-0351, U.S. 151, or APT 740 Compression Riveters. This stand comes with the 351FCT08 Air Foot Pedal Control Assembly that has 8 ft. hoses and has a working height of 41". This provides a hands-free option where components require both hands for stability.



Riveter not included.

Michigan Pneumatic

CP-0450 Pressure Pad Dolly



Model No.	Description
P078691	3/8" Pressure Pad Dolly
P078692	1/2" Pressure Pad Dolly

Michigan Pneumatic

CP-0450EA Shank Adapters

Allows standard CP-0450EA riveter to accept MP-351 & CP-0351 rivet squeezer rivet sets.



Model No.	Description
P081392	0.1875" Shank adapter
P081393	0.250" Shank Adapter
P082189	0.3125" Shank Adapter
P082190	0.375" Shank Adapter

Michigan Pneumatic

CP-0450EA Flush Sets



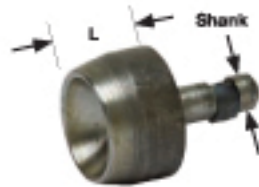
Model No.	Description
P081391	23/64" Flush Set
P085110	23/64" Flush Set, 3-1/2 Long
P081390	31/64" Flush Set
P081389	39/64" Flush Set

See pages 94-95 & 97 for additional accessories.

Rivet Squeezer Accessories



.187" Rivet Sets



Squeeze Riveter Sets

No.	L
SM200	1/4"
SM201	3/8"
SM202	1/2"
SM203	5/8"
SM204	3/4"

For example, to order:
3/8" Long; 1/4" Button
Specify: SM201-4358

Description	Rivet Diameter				
	3/32"	1/8"	5/32"	3/16"	1/4"
Round AN430	4303	4304	4305	4306	4308
Flat AN442	4423	4424	4425	4426	4428
Brazier AN455	4553	4554	4555	4556	4558
Mod. Brazier AN456	4563	4564	4565	4566	4568
Universal AN470	4703	4704	4705	4706	4708
Button AN435	4353	4354	4355	4356	4358

Flush Sets

No.	L
SM210	1/8"
SM211	1/4"
SM212	3/8"
SM213	1/2"
SM214	5/8"
SM215	3/4"
SM217	1"



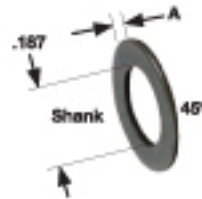
Tubular Rivet Set

No.	L
SM200	1/4"
SM201	3/8"
SM202	1/2"
SM203	5/8"
SM204	3/4"



Spacer Shims

No.	A
SM-S0	1/64" (0.0156")
SM-S1	1/32" (0.0312")
SM-S2	1/16" (0.0625")



Tubular AN-450

Description	Rivet Diameter				
	3/32"	1/8"	5/32"	3/16"	1/4"
	4503	4504	4505	4506	4508

.250"/.312"/.375" Rivet Sets

Squeeze Riveter Sets

Rivet sets can be furnished in 1/4", 3/8", 1/2", 5/8" and 3/4" lengths and shank sizes. Please specify shank size, length and rivet.

For example, to order:
1/4" Long; 1/8" Universal
Specify: SM220-4704

Description	Rivet Diameter							
	3/32"	1/8"	5/32"	3/16"	1/4"	5/16"	3/8"	
Round AN430	4303	4304	4305	4306	4308	43010	43012	
Flat AN442	4423	4424	4425	4426	4428	44210	44212	
Brazier AN455	4553	4554	4555	4556	4558	45510	45512	
Mod. Brazier AN456	4563	4564	4565	4566	4568	45610	45612	
Universal AN470	4703	4704	4705	4706	4708	47010	47012	
Button AN435	4353	4354	4355	4356	4358	43510	43512	

.250 Shank

No.	L
SM220	1/4"
SM221	3/8"
SM222	1/2"
SM223	5/8"
SM224	3/4"

.312 Shank

No.	L
SM240	1/4"
SM241	3/8"
SM242	1/2"
SM243	5/8"
SM244	3/4"

.375 Shank

No.	L
SM260	1/4"
SM261	3/8"
SM262	1/2"
SM263	5/8"
SM264	3/4"



Flush Sets



.250 Shank

No.	L
SM230	1/8"
SM231	1/4"
SM232	3/8"
SM233	1/2"
SM234	5/8"
SM235	3/4"
SM236	7/8"
SM237	1"

.312 Shank

No.	L
SM250	1/8"
SM251	1/4"
SM252	3/8"
SM253	1/2"
SM254	5/8"
SM255	3/4"
SM256	7/8"
SM257	1"

.375 Shank

No.	L
SM270	1/8"
SM271	1/4"
SM272	3/8"
SM273	1/2"
SM274	5/8"
SM275	3/4"
SM276	7/8"
SM277	1"

Some rivet/flush sets may require a six-piece minimum order. Please call for availability.

Riveting Hammers, Busters & Accessories



Michigan Pneumatic Model MP-60R Riveting Hammer

Medium-duty hammer recommended for riveting work on tanks, steel cars and light structural steel. Powerful, smooth running and easy to hold. Can be converted to a rivet buster with retainer for using chisels. Parts interchangeable with CP-60, 4689 series riveters.

P001381 Retainer Clip

Capacity.....	7/8" Hot Rivets	Length.....	17-9/16"
Bore.....	1-1/16"	Weight.....	20.5 lbs.
Piston Stroke.....	7-5/16"	Shank Diameter.....	1.217"
Blows Per Minute.....	1320	Air Inlet Thread.....	3/8"



Michigan Pneumatic Model MP-80RB Rivet Buster

Powerful rivet buster can be used for cutting large rivets and bolts. Great for heavy-duty chipping in construction applications. Equipped with retainer parts and spring. Can be converted to a riveter for using rivet sets by removing the retainer accessories and adding a P001381 retainer clip. Parts interchangeable with CP-80, 4689 series riveters.

1502 Upper Sleeve
1504 Lower Sleeve
1505 Rubber Bumper
194 Lock Spring
190-2.445 Retainer

Capacity.....	1-1/8" Hot Rivets	Length.....	22"
Bore.....	1-1/16"	Weight.....	24 lbs.
Piston Stroke.....	9-1/2"	Shank Diameter.....	1.217"
Blows Per Minute.....	1200	Air Inlet Thread.....	3/8"



Michigan Pneumatic Model MP-90RBHDCC Rivet Buster

Heavy-duty riveter will drive hot rivets up to 1-1/4" diameter. Sizes designed for light and medium riveting work also available. Suited for general construction work and pipe lines. Can be converted to a riveter for using rivet sets by removing the retainer accessories and adding a P001381 retainer clip. Parts interchangeable with CP-90, 4689 series riveters.

2101 Upper Sleeve
2103 Lower Sleeve
2104 Rubber Bumper
194 Lock Spring
2190-2.445 Retainer

Capacity.....	1-1/4" Hot Rivets	Length.....	20-9/16"
Bore.....	1-1/16"	Weight.....	23 lbs.
Piston Stroke.....	10"	Shank Diameter.....	1.217"
Blows Per Minute.....	1020	Air Inlet Thread.....	3/8"

Riveting Hammer Accessories

Fits 1.217 Shank Hammers



DEL121712ND
Nail Driver



DEL121734ND
Nail Driver



160-2.445 Retainer
(uses 1194-2 & 194 Lock Springs)



P001381
Retainer Clip



A



B

Flush Rivet Sets

Part No.	Face Dia. (A)
DEL1551	1-1/4"
DEL1552	1-3/8"
DEL1553	1-5/8"
DEL1554	1-3/4"
DEL1555	2"

Buttonhead Rivet Sets

Part No.	Rivet Size	Cup Dia. (B)
DEL1502	7/16"	11/16"
DEL1503	1/2"	25/32"
DEL1505	5/8"	1"
DEL1506	11/16"	1-3/32"
DEL1507	3/4"	1-3/16"
DEL1508	13/16"	1-9/32"
DEL1509	7/8"	1-3/8"
DEL15010	15/16"	1-15/32"
DEL15011	1"	1-19/32"
DEL15013	1-1/8"	1-3/4"
DEL15015	1-1/4"	2"

See page 108 for rivet buster accessories.

Rivet Busters



Michigan Pneumatic Model MP-4181-USA-NEP

Rivet Buster

Ideal for cutting large rivets, concrete demolition, and heavy-duty chipping work in maintenance and construction. Features a Boyer spool valve to deliver smooth power in any operating position. Equipped to accept 2000 series jumbo chisels. Optional T-handle #0448051-C available. Model MP-4181T-USA-NEP with trenching handle available.



MADE
U.S.A.
IN THE

- 2101 Upper Sleeve
- 2103 Lower Sleeve
- 2104 Rubber Bumper
- 2194 Lock Spring
- 2190-2.557 Retainer

Capacity.....	1" Rivets	Length.....	26"
Bore.....	1-3/16"	Weight.....	34.5 lbs.
Piston Stroke.....	11"	Shank Diameter.....	1.5"
Blows Per Minute.....	720	Air Inlet Thread.....	3/8"



Michigan Pneumatic Model MP-4181RB-8

Rivet Buster

Ideal for cutting large rivets, concrete demolition, heavy-duty chipping work in maintenance and construction. Great for overhead bridge and parking deck concrete repair and demolition work. Features Boyer spool valve to deliver smooth power in any operating position. Equipped to accept 2000 series jumbo chisels. Optional T-handle #0448051-C available. Model MP-4181T-8 with trenching handle available.



- 2101 Upper Sleeve
- 2103 Lower Sleeve
- 2104 Rubber Bumper
- 2194 Lock Spring
- 2190-2.557 Retainer

Capacity.....	7/8" Rivets	Length.....	23"
Bore.....	1-3/16"	Weight.....	31.25 lbs.
Piston Stroke.....	8"	Shank Diameter.....	1.5"
Blows Per Minute.....	1080	Air Inlet Thread.....	3/8"



Michigan Pneumatic Model MP-4181RB

Rivet Buster

Ideal for cutting large rivets, concrete demolition, and heavy-duty chipping work in maintenance and construction. Features a Boyer spool valve to deliver smooth power in any operating position. Equipped to accept 2000 series jumbo chisels. Optional T-handle #0448051-C available. Model MP-4181T with trenching handle available.



- 2101 Upper Sleeve
- 2103 Lower Sleeve
- 2104 Rubber Bumper
- 2194 Lock Spring
- 2190-2.557 Retainer

Capacity.....	1" Rivets	Length.....	26"
Bore.....	1-3/16"	Weight.....	34.5 lbs.
Piston Stroke.....	11"	Shank Diameter.....	1.5"
Blows Per Minute.....	720	Air Inlet Thread.....	3/8"



Michigan Pneumatic Model MP-RB90-J

Rivet Buster

Powerful, hard hitting hammer is ideal for cutting bolts and rivet heads. Great for heavy-duty chipping and nail driving. Simple removal of retainer and parts converts tool to a riveter for using rivet sets. Jumbo Model MP-RB91-J with 1.5" shank comes equipped with 2101, 2103, 2104, 2194 & 2190-2.400 accessories to accept 2000 series jumbo chisels.



MP-RB90-J (only):

- 1502 Upper Sleeve
- 1504 Lower Sleeve
- 1505 Rubber Bumper
- 194 Lock Spring
- 190-2.400 Retainer

Capacity.....	1-1/4" Hot Rivets	Length.....	20-1/4"
Bore.....	1-1/16"	Weight.....	23 lbs.
Piston Stroke.....	9"	Shank Diameter.....	1.217"
Blows Per Minute.....	950	Air Inlet Thread.....	3/8"

Rivet Busters



MADE
U.S.A.
IN THE

Michigan Pneumatic **Model MP-633**
Model MP-633-NEP

Rivet Buster

Ideal for construction, ship building and heavy machinery. Designed to deliver slow, heavy blows. Equipped to accept 2000 series jumbo chisels. Model MP-633-NEP features a non-ejectable piston.

- 2101 Upper Sleeve
- 2103 Lower Sleeve
- 2104 Rubber Bumper
- 2194 Lock Spring
- 2190-2.557 Retainer

Capacity.....	3/4"	Length.....	20-1/2"
Bore.....	1-3/16"	Weight.....	27.5 lbs.
Piston Stroke.....	6"	Shank Diameter.....	1.5"
Blows Per Minute.....	1100	Air Inlet Thread.....	3/8"



MADE
U.S.A.
IN THE

Michigan Pneumatic **Model MP-133**
Model MP-133-NEP

Rivet Buster

Heavy-duty hammer recommended for steel cars and light structural work. Ideal for bridge deck repair and rivet work on underground tanks. Equipped to accept 2000 series jumbo chisels. Model MP-133-NEP features a non-ejectable piston.

- 2101 Upper Sleeve
- 2103 Lower Sleeve
- 2104 Rubber Bumper
- 2194 Lock Spring
- 1851 Retainer

Capacity.....	7/8"	Length.....	22"
Bore.....	1-3/16"	Weight.....	30 lbs.
Piston Stroke.....	8"	Shank Diameter.....	1.5"
Blows Per Minute.....	960	Air Inlet Thread.....	3/8"



MADE
U.S.A.
IN THE

Michigan Pneumatic **Model MP-1133**
Model MP-1133-NEP

Rivet Buster

Powerful long stroke hammer has the ability to perform all extra heavy-duty demolition applications. Ideal for cutting large rivets, bolts and underground tanks. Equipped to accept 2000 series jumbo chisels. Model MP-1133-NEP features a non-ejectable piston.

- 2101 Upper Sleeve
- 2103 Lower Sleeve
- 2104 Rubber Bumper
- 2194 Lock Spring
- 1851 Retainer

Capacity.....	1"	Length.....	25"
Bore.....	1-3/16"	Weight.....	34 lbs.
Piston Stroke.....	11"	Shank Diameter.....	1.5"
Blows Per Minute.....	850	Air Inlet Thread.....	3/8"



Michigan Pneumatic **Model MP-RB900I-J**
Model MP-RB910I-J

Rivet Buster

Powerful hammer for concrete demolition, cutting bolts and rivet heads. Additional applications include heavy-duty chipping and nail driving. Features a D-handle with inside trigger and built-in oil reservoir. **Jumbo Model MP-RB910I-J** with 1.5" shank comes equipped with 2101, 2103, 2104, 2194 & 2190-2.400 accessories to accept 2000 series jumbo chisels.

MP-RB900I-J (only):

- 1502 Upper Sleeve
- 1504 Lower Sleeve
- 1505 Rubber Bumper
- 194 Lock Spring
- 190-2.400 Retainer

Capacity.....	1-1/4"	Length.....	20-1/2"
Bore.....	1-1/16"	Weight.....	24 lbs.
Piston Stroke.....	9"	Shank Diameter.....	1.217"
Blows Per Minute.....	900	Air Inlet Thread.....	3/8"

Rivet Buster Accessories



Rivet Buster Chisels 1500 series and 2000 series chisels and accessories

Standard Chisel		for cutting loose rivets
Moil Point		for concrete demolition
Side Cut Chisel		for busting heads off tight rivets
Ripper		for all cutting operations
Back Out Punch		for backing out tight rivets
Long Clearance Back Out Punch		for long clearance punches

Type	Length	1500 Series Heavy-Duty	2000 Series Jumbo Extra Heavy-Duty
Standard Chisel	9"	1506	2005
	12"	1506-12	2005-12
	18"	1506-18	2005-18
Moil Point	9"	1512	2011
	12"	1512-12	2011-12
	18"	1512-18	2011-18
Side Cut Chisel	9"	1507	2006
	12"	1507-12	2006-12
	18"	1507-18	2006-18
Ripper	9"	1511	2010
3/8" Back Out Punch	9"	1515	-
1/2" Back Out Punch	9"	1516	2019
	9"	1524-4LC	-
	11"	1524-6LC	-
5/8" Back Out Punch	13"	1524-8LC	-
	9"	1508	2007
	9"	1520-4LC	2024-4LC
3/4" Back Out Punch	11"	1520-6LC	2024-6LC
	13"	1520-8LC	2024-8LC
	9"	1509	2008BP
7/8" Back Out Punch	9"	1521-4LC	2025-4LC
	11"	1521-6LC	2025-6LC
	13"	1521-8LC	2025-8LC
1" Back Out Punch	9"	1510	2009
	9"	1522-4LC	2026-4LC
	11"	1522-6LC	2026-6LC
1-1/8" Back Out Punch	13"	1522-8LC	2026-8LC
	9"	1517	2020
	9"	1525-4LC	2028-4LC
1-1/2" Back Out Punch	11"	1525-6LC	2028-6LC
	13"	1525-8LC	2028-8LC
	9"	-	2021BP
1-1/2" Shank Spike Driver	9"	-	2029-4LC
	11"	-	2029-6LC
	13"	-	2029-8LC



2000 Series Side Cut Chisel

Type	Length	Model No.
Side Cut Chisel	9"	276-AC



2000 Series Non-Sparking Ripper

Type	Length	Model No.
Non-Sparking Ripper	9-1/2"	295BC



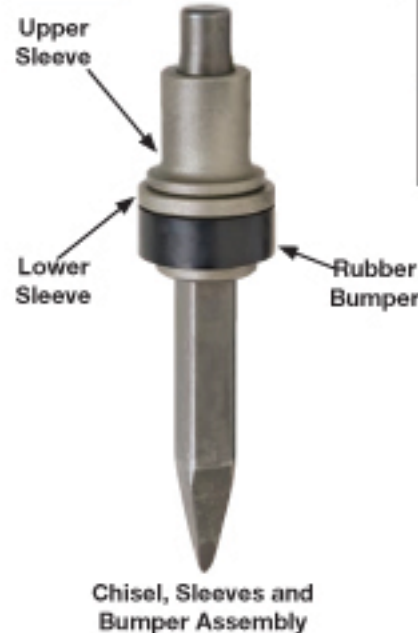
2000 Series Wide Chisels

Type	Length	Model No.
2-1/2" Wide Chisel	15"	5602



Rail Road Spike Driver

Type	Length	Model No.
1-1/2" Shank Spike Driver	8"	115SD



Retainer Parts



1500 Series Replacement Retainer Parts	
Type	Model No.
Safety Retainer	190 Series
Lock Spring	194
Upper Sleeve	1502
Lower Sleeve	1504
Lower Sleeve (split)	1504S
Rubber Bumper	1505
Poly Bumper	1505P

2000 Series Replacement Retainer Parts	
Type	Model No.
Safety Retainer	2190 Series
Lock Spring	2194
Upper Sleeve	2101
Lower Sleeve	2103
Lower Sleeve (split)	2103S
Rubber Bumper	2104
Poly Bumper	2104P

#2035 Conversion Kit

Converts all rivet busters with 190 retainer to take 2000 Series jumbo extra heavy-duty tools without a new hammer or retainer.

Description	Model No.
Upper Sleeve	2000
Lower Sleeve	2003
Rubber Bumper	1505
Complete Kit	2035

Rivet Buster Retainers - for other manufacturers

Model No.	Fits Tool	"B"
190-2.400	Jet RB-90, MP-RB90-J	2.400"
190-2.445	CP-40, 50, 60, 80, 90	2.445"
2190-2.557	CP-4181, MP-4181	2.557"
2190-2.565	Toku RB-110	2.565"
2190-2.400	Jet RB-91, MP-RB91-J	2.400"
2190-2.445	CP-40, 50, 60, 80, 90	2.445"
2190-2.385	Thor-11RB, Kent 800, 1100	2.385"
190-2.385	Thor-53, 63, 83, 93	2.385"
1851	APT-133, Thor-283	2.610"
9001-200	IR-9001	2.500"



Any rivet hammer can be converted to a rivet buster by grooving barrel and adding retainer parts. Please specify make and model of hammer when ordering retainer.

POP® Blind Riveters



POP® Model PRG510A Pneumatic Riveter

Low cost riveter designed for high speed production, trouble free riveting and easy maintenance. See page 89 for MCS retrofit kit. Model PRG510A-Plus includes a 6 ft. hose, additional nosepieces and an adjusting screw. Model MCS510A with Mandrel Collection System (MCS) also available.

- PRG402-8A Jaw Set
- PRG520-33 Jaw Pusher
- PRG510-130 Jaw Lube

- Nosepieces:**
- PRN414 1/8" Open End
 - PRN514 5/32" Open End
 - PRN614 3/16" Open End



Weight.....4 lbs.
Stroke.....5/8"
Pulling Force.....1000 lbs.
Pressure.....85 psi
Air Consumption.....0.007 c/rivet

Material		Rivet Diameter					
Rivet	Mandrel	3/32"	7/64"	1/8"	5/32"	3/16"	1/4"
Alum.	Alum.	•		•/c	•/c	•/c	
Alum.	Steel	•		•/c	•	•/†	
Steel	Steel	•		•	•		
Monel	Steel		•	•	•		
Stainless	Steel			•	•		
Stainless	Stainless			•/c			

• - Open end rivet c - Closed end rivet † - Except Multi-Grip

POP® Model PRG511A Extended Nose Riveter

Low cost riveter designed for high speed production, trouble free riveting and easy maintenance. See page 89 for MCS retrofit kit. Model MCS511A with Mandrel Collection System (MCS) also available.

- PRG402-8A Jaw Set
- PRG520-33 Jaw Pusher
- PRG510-130 Jaw Lube

- Nosepieces:**
- PRN414 1/8" Open End
 - PRN514 5/32" Open End
 - PRN614 3/16" Open End



Weight.....4 lbs.
Stroke.....5/8"
Pulling Force.....1000 lbs.
Pressure.....85 psi
Air Consumption.....0.007 c/rivet

Material		Rivet Diameter					
Rivet	Mandrel	3/32"	7/64"	1/8"	5/32"	3/16"	1/4"
Alum.	Alum.	•		•/c	•/c	•/c	
Alum.	Steel	•		•/c	•	•	
Steel	Steel	•		•	•		
Monel	Steel		•	•	•		
Stainless	Steel			•	•		
Stainless	Stainless			•/c			

• - Open end rivet c - Closed end rivet

POP® Model PRG540 Air/Hydraulic Riveter

Ideal for high production assembly. World's most widely used blind riveter, designed to increase productivity. Sets the entire range of rivets. Sets high strength structural 1/4" rivets and 1/4" stainless Ultra-Grip rivets. See page 87 for MCS retrofit kit. 1/4" nosepiece and jaws for additional cost.

- PRG540-44 1/4" Jaw Set
- PRG540-46 3/16" Jaw Set
- PRG740-7A 1/4" Jaw Pusher
- PRG510-130 Jaw Lube

- Nosepieces:**
- PRN414 1/8" Open End
 - PRN514 5/32" Open End
 - PRN614 3/16" Open End
 - PRN811 1/4" Open End



Weight.....4.5 lbs.
Stroke.....11/16"
Pulling Force.....3000 lbs.
Pressure.....85 psi
Air Consumption.....0.022 c/rivet

Material		Rivet Diameter						T-Rivets		UltraGrip	
Rivet	Mandrel	3/32"	7/64"	1/8" & 5/32"	3/16"	1/4"	3/16"	1/4"	3/16"	1/4"	
Alum.	Alum.	•		•/c	•/c	•			•	•	
Alum.	Steel	•		•/c	•/c	•/c	•	•	•	•	
Steel	Steel	•		•/c	•/c	•/c	•	•	•	•	
Monel	Steel		•	•	•	•			•	•	
Stainless	Steel			•	•	•			•	•	
Stainless	Stainless			•/c	•/c				•	•	

• - Open end rivet c - Closed end rivet

POP® Model MCS540 Air/Hydraulic Riveter

Ideal for high production assembly. World's most widely used blind riveter, designed to increase productivity. Sets the entire range of rivets. Sets high strength structural 1/4" rivets and 1/4" stainless Ultra-Grip rivets. 1/4" nosepiece and jaws for additional cost. Equipped with Mandrel Collection System (MCS).

- PRG540-44 1/4" Jaw Set
- PRG540-46 3/16" Jaw Set
- PRG740-7A 1/4" Jaw Pusher
- PRG510-130 Jaw Lube

- Nosepieces:**
- PRN414 1/8" Open End
 - PRN514 5/32" Open End
 - PRN614 3/16" Open End
 - PRN811 1/4" Open End



Weight.....4.5 lbs.
Stroke.....11/16"
Pulling Force.....3000 lbs.
Pressure.....85 psi
Air Consumption.....2 c/rivet

Material		Rivet Diameter						T-Rivets		UltraGrip	
Rivet	Mandrel	3/32"	7/64"	1/8" & 5/32"	3/16"	1/4"	3/16"	1/4"	3/16"	1/4"	
Alum.	Alum.	•		•/c	•/c	•			•	•	
Alum.	Steel	•		•/c	•/c	•/c	•	•	•	•	
Steel	Steel	•		•/c	•/c	•/c	•	•	•	•	
Monel	Steel		•	•	•	•			•	•	
Stainless	Steel			•	•	•			•	•	
Stainless	Stainless			•/c	•/c				•	•	

• - Open end rivet c - Closed end rivet



POP® Blind Riveters

POP® Model PROSET2500 & PROSET2500MCS Air/Hydraulic Riveter

Mid-range air-hydraulic riveter designed to set blind rivets up to and including 3/16" diameter. Ergonomically engineered with a light trigger for easy one-hand operation. **Model PROSET 2500MCS** equipped with **Mandrel Collection System (MCS)**.

13300	Jaw Set (3pc.)	Nosepieces:	
FAN275-028	1/8" & 5/32" Pusher	PRN414	1/8" Open End
DPN275-027	3/16" Pusher	PRN514	5/32" Open End
PRG510-130	Jaw Lube	PRN614	3/16" Open End



2500 Weight.....	2.65 lbs.
2500MCS Weight.....	2.80 lbs.
Stroke.....	0.71"
Pulling Force.....	2110 lbs.
Pressure.....	90 psi
Air Inlet.....	1/4"
Air Consumption.....	0.076 cfrivet
MCS Air Consumption.....	2.47 cfm

Material		Rivet Diameter		T-Rivets		UltraGrip
Rivet	Mandrel	1/8" & 5/32"	3/16"	1/8" to 3/16"	3/16"	
Alum.	Alum.	•/c	•/c			•
Alum.	Steel	•/c	•/c	•		•
Steel	Steel	•/c	•/c			•
Monel	Steel	•	•/†			•
Copper	Steel	c	c			•
Stainless	Stainless	•/c	•/c / †			•

• - Open end rivet c - Closed end rivet † - Except Multi-Grip

POP® Model PROSET3400 & PROSET3400MCS Air/Hydraulic Riveter

Capable of setting the entire range of rivets. Sets most 1/4" rivets with a single pull. Lightweight tool allows operator easy maneuverability. **Model PROSET 3400MCS** equipped with **Mandrel Collection System (MCS)**.

PRG540-44	1/4" Jaw Set	Nosepieces:	
PRG540-46	3/16" Jaw Set	PRN414	1/8" Open End
FAN275-004	1/8" & 5/32" Pusher	PRN514	5/32" Open End
DPN276-006	3/16" & 1/4" Pusher	PRN614	3/16" Open End
PRG510-130	Jaw Lube	PRN811	1/4" Open End



3400 Weight.....	4.19 lbs.
3400MCS Weight.....	4.41 lbs.
Stroke.....	1.02"
Pulling Force.....	3400 lbs.
Pressure.....	90 psi
Air Inlet.....	1/4"
Air Consumption.....	0.172 cfrivet
MCS Air Consumption.....	2.83 cfm

Material		Rivet Diameter		T-Rivets		UltraGrip
Rivet	Mandrel	1/8" to 1/4"	1/8" to 1/4"	3/16" to 1/4"		
Alum.	Alum.	•/c				•
Alum.	Steel	•/c	•			•
Steel	Steel	•/c				•
Stainless	Stainless	•/c				•

• - Open end rivet c - Closed end rivet

POP® Model PRT5250A & MCS5250A Air/Hydraulic Riveter

Unique, lightweight, straight lever-operated riveter capable of setting commercial blind rivets up to and including 3/16" diameter. Ideal for assembly line production. **Model MCS5250A** equipped with **Mandrel Collection System (MCS)**.

PRG540-46	3/16" Jaw Set
PRG520-33	Jaw Pusher
PRG510-130	Jaw Lube

Nosepieces:

PRN414	1/8" Open End
PRN514	5/32" Open End
PRN614	3/16" Open End



PRT5250A Weight.....	3.9 lbs.
MCS5250A Weight.....	4.8 lbs.
Stroke.....	0.63"
Pulling Force.....	1700 lbs.
Pressure.....	85 psi
Air Inlet.....	1/4"
Air Consumption.....	0.028 cfrivet
MCS Air Consumption.....	12.5 cfm

Material		Rivet Diameter			T-Rivets	UltraGrip
Rivet	Mandrel	3/32"	7/64"	1/8" to 3/16"	3/16"	3/16"
Alum.	Alum.	•		•/c		•
Alum.	Steel	•		•/c	•	•
Steel	Steel	•		•/c		•
Monel	Steel		•	•		•
Stainless	Steel			•		•
Stainless	Stainless			•/c		•

• - Open end rivet c - Closed end rivet

POP® Model PRT5400 & MCS5400 Air/Hydraulic Riveter

Sets most 1/4" rivets with a single pull. Capable of setting the entire range of rivets. Lightweight tool allows operator easy maneuverability. **Model MCS5400** equipped with **Mandrel Collection System (MCS)**.

PRG540-44	1/4" Jaw Set	Nosepieces:	
PRG540-46	3/16" Jaw Set	PRN414	1/8" Open End
PRT5500-6	3/16" Pusher	PRN514	5/32" Open End
PRT5500-8	1/4" Pusher	PRN614	3/16" Open End
PRG510-130	Jaw Lube	PRN811	1/4" Open End



PRT5400 Weight.....	4.63 lbs.
MCS5400 Weight.....	4.95 lbs.
Stroke.....	0.63"
Pulling Force.....	3400 lbs.
Pressure.....	85 psi
Air Inlet.....	1/4"
Air Consumption.....	0.028 cfrivet
MCS Air Consumption.....	2 cfm

Material		Rivet Diameter				T-Rivets	UltraGrip
Rivet	Mandrel	3/32"	7/64"	1/8" to 3/16"	1/4"	3/16" to 1/4"	3/16" to 1/4"
Alum.	Alum.	•		•/c	•		•
Alum.	Steel	•		•/c	•/c	•	•
Steel	Steel	•		•/c	•/c		•
Monel	Steel		•	•	•		•
Stainless	Steel			•	•		•
Stainless	Stainless			•/c			•

• - Open end rivet c - Closed end rivet

Blind Riveters, Rivet-Nut Tools & Hydraulic Pumps



Michigan Pneumatic HCS Series pumps are built to last. Constructed of high quality, industrial grade materials, these pumps can be depended upon for high production assembly work. Heavy steel box with removable front panel for quick inspection. Convenient features include externally adjustable air pressure, top mounted oil filler cap, flush mounted air and hydraulic pressure gauges, and sight glass to monitor oil level. The spring loaded handles allow for easy packing and transportation.

The **MPT HCS Series** high-volume hydraulic pumps are designed for accurate, repeatable fastener installations once oil pressure and air pressure have been regulated.

These versatile pumps can easily be converted to overhead, suspended pumps for trolley-mounted moving assembly line applications. Other special modifications can be made at additional costs.



Michigan Pneumatic Model MP-HCS-1000HD Hydraulic Riveter Pump

Designed to replace the Chicago Pneumatic Model CP-0805ARDR power rigs. Considerably quieter and faster than any competitive product. Powers all CP pneumatic, riveting and broaching tools such as the CP-503, 505, 505A, 507, 507A and 509A. Comes equipped with an 8 ft. hose and an overhose protector. Longer length hoses available. **Riveter and yoke not included.**

Length.....	18-1/4"	Pressure.....	7000 psi
Width.....	12-1/4"	Volume.....	100 cu. in./min.
Height.....	22-1/4"	Rec'd Hose Size.....	3/8"
Weight.....	95 lbs.	Air Inlet Thread.....	1/2"



MP-7403-ST

Michigan Pneumatic Model MP-7403-ST Model MP-7503-ST Pneumatic/Hydraulic Riveters

Rugged tools suitable for setting steel rivets. Lightweight design for pulling most size rivets. Air relief prevents overloading. The most practical and versatile rivet tools in the industry. **Model MP-7403-ST includes nosepieces for 3/32", 1/8", 5/32" and 3/16" rivets. Model MP-7503-ST includes nosepieces for 3/32", 1/8", 5/32", 3/16", 7/32" and 1/4" rivets.**

MP-7403-ST (only):

2020-05 Jaw Set
2020-06 Jaw Pusher
2020-04 Jaw Case

MP-7503-ST (only):

3057-62 Jaw Set
3057-08A Jaw Pusher
3057-061A Jaw Case

Model	MP-7403-ST	MP-7503-ST
Capacity	3/16" Steel	1/4" Steel
Height	10"	13"
Weight	3.25 lbs.	4.825 lbs.
Rec'd Hose Size	1/4"	3/8"
Air Inlet Thread	1/4"	1/4"
Avg. Air Consumption	3.5 cfm	4.5 cfm

POP® Model PNT800L-PC-T Model PNT1000L-PC-T

POP NUT™ Tools

Lightweight tools designed for installing POP NUT™ blind rivet nuts and other blind threaded inserts utilizing the *setting force*. Controlling the setting force eliminates application and nut damage due to "double stroking." Available with unified or metric threaded mandrel. Sold with one nose assembly of your choice. Please specify.



PNT800L-PC-T

PNT1000L-PC-T

Model	PNT800L-PC-T	PNT1000L-PC-T
Thread Size	8-32 to 3/8"-16	1/4"-20 to 1/2"-13
Height	10.4"	11.6"
Weight	3.99 lbs.	6.11 lbs.
Rec'd Hose Size	1/4"	1/4"
Air Inlet Thread	1/4"	1/4"



Blind Riveters & Accessories

POP® Model PS15 Advanced Manual Riveter

Improved ergonomic hand tool features shorter nose housing, innovative latch design, patented compound link, soft contoured handles, shorter grip opening for easy one-hand operation and a new overall design to minimize friction and improve performance.



Material		Rivet Diameter		
Rivet	Mandrel	3/32"	1/8"	5/32" & 3/16"
Alum.	Alum.	•		•/○/•
Alum.	Steel	•		•/○/•
Steel	Steel			
Stainless	Stainless		•	

• - Open end rivet ○ - Closed end rivet • - Multi-Grip

POP® Mandrel Collection System

This vacuum design holds the rivet securely in the nosepiece, even when the tool is pointed down. When the rivet is set, the spent mandrel is instantly propelled into the collection bottle at the rear of the tool. Reduces shop cleanup time, promotes safety, improves product quality, and minimizes downtime.



Retrofit Kit for PRT/PRG Tools

Tool Model No.	Kit No.
PRG510/PRG511	MCS510-100
PRG540	MCS540-100
PRT5200	MCS5200-100
PRT5400	MCS5400-100

Collector capacity: 500 1/8" rivets; 300 3/16" rivets; 400 5/32" rivets; 100 1/4" rivets

POP® Model ProSet® 1600 & ProSet® 1600MCS Air/Hydraulic Riveter

Features an innovative left or right, On/Off swivel air fitting providing additional flexibility, conserving energy and reducing operating costs. The 1600 will set 2.0 mm Micro Rivets, 3/32" and 1/8" diameter rivets in all materials and up to 5/32" all steel open end rivets.



Material		Rivet Diameter	
Rivet	Mandrel	3/32" & 1/8"	5/32"
Aluminum	Aluminum	•/○	•/○
Aluminum	Steel	•/○	•/○
Steel	Steel	•/○	•/†
Copper	Steel	○	○
Stainless	Stainless	•/○	○
Mandrel	Steel	•	•

• - Open end rivet ○ - Closed end rivet † - Except Multi-Grip

POP® Model PRH850 Rivetool Corner Head

Designed for setting "POP" Rivets in restricted areas not accessible for straight riveting. Sets rivets at 90° angle. Excellent for corner assembly. **Adaptable to the PRG540 tool only, using PRH850-540 adaptor.**



Material		Rivet Diameter	
Rivet	Mandrel	3/16"	1/8"
Aluminum	Aluminum	•/○	
Aluminum	Steel	•/○	•/○
Steel	Steel	•	•
Mandrel	Steel	•	•
Stainless	Stainless	•	

• - Open end rivet ○ - Closed end rivet

POP® Model MSC5800 Portable/Rechargeable Riveter

Ideal for site and maintenance work. Useful alongside a moving line or where access to a pneumatic line is impossible. Battery pack has the endurance to set up to 1900 rivets and can be recharged in an hour. **Equipped with Mandrel Collection System (MCS).**

MCS5800-40 Battery
MCS5800-45 Battery Charger



Sets	3/32" to 3/16", all materials
Stroke	0.787"
Recharge	1 hour
Power	Built-in, rechargeable 12V battery

FAR Model RAC180 Model RAC171 Air/Hydraulic Riveter

Lightweight, ergonomic design features front center swivel air port, push button trigger and vacuum collection system.



Model RAC180	
Capacity	1/4" Aluminum
Stroke	0.775"
Weight	4.2 lbs.
Avg. Air Consumption	5 cfm

Model RAC171	
Capacity	1/4" Monobolt®
Stroke	0.775"
Weight	5.5 lbs.
Avg. Air Consumption	11.4 cfm



The tool shown on this page has been specifically designed to install the A-L, A-K, A-H, A-P and A-O Series Inserts.

Select the type of insert (not shown) and thread size required for your application, then select the appropriate RPM tool from the charts below.



Dimensional Data

RPM	Weight (Lbs.)	A	B	C	D (Dia.)	E (Dia.)	F (Dia. Max.)	G
3000	2.55	1.86"	4.75"	7.75"	1.57"	1.00"	0.400"	1.3"
1500	2.58	1.86"	4.75"	7.75"	1.57"	1.00"	0.400"	1.3"
900	3.18	1.86"	6.00"	9.00"	1.57"	1.00"	0.500"	1.3"
600	3.18	1.86"	6.00"	9.00"	1.57"	1.00"	0.640"	1.3"
350	3.25	1.86"	5.37"	8.37"	1.50"	1.42"	0.900"	NA

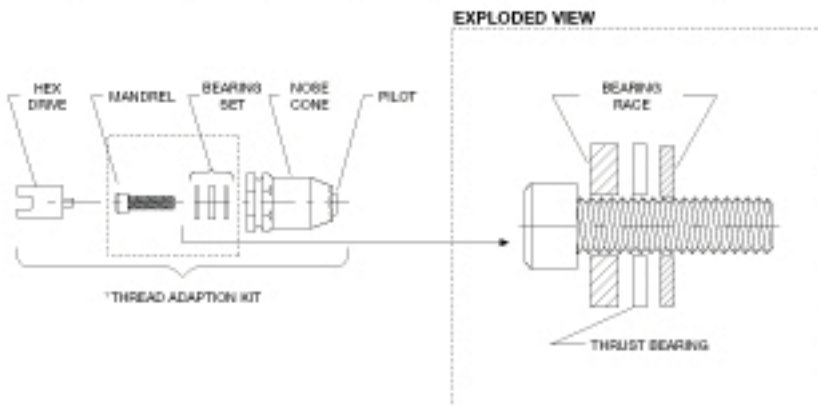
PROPER AIR SUPPLY SET-UP REQUIRES:

- Refer to tool selection chart below for proper PSI setting at 25 CFM
- Inline oiler / separator
- Air pressure gauge
- 5/16 minimum hose ID
- 5/16 minimum fittings ID

PREVENTATIVE MAINTENANCE REQUIREMENTS:

- The bearing set must be kept in a WET lubricated condition to assure proper tool operation. AVK suggests the use of high temperature grease such as LUBRIPLATE BRAND 930 AA.
- The tool mandrel should be inspected for thread wear or damage and replaced. AVK suggests the use of Unbrako or Holo-Krome socket head cap screws.

SPECIAL FEATURE — This tool nose cone design incorporates a special pilot / serrated tip that is essential to proper insert installation. The "AK" prefix in the tool part number designates this feature.



Tool Selection

Model No. (Complete Tool)	Thread Size	RPM	¹ Thread Adaption Kit	PSI (Dynamic)
AKPT30P632	6-32 UNC	3000	AKPT632TAK	70-80
AKPT30P832	8-32 UNC	3000	AKPT832TAK	75-90
AKPT15P1024	10-24 UNC	1500	AKPT1024TAK	60-80
AKPT15P1032	10-32 UNF	1500	AKPT1032TAK	60-80
AKPT9P420	1/4"-20 UNC	900	AKPT420TAK	70-90
AKPT6P518	5/16"-18 UNC	600	AKPT518TAK	80-110
AKPT6P616	3/8"-16 UNC	600	AKPT616TAK	80-110
AKPT3P813	1/2"-13 UNC	350	AKPT813CTA	80-110
AKPT30P470	M4x0.7 ISO	3000	AKPT470TAK	70-80
AKPT15P580	M5x0.8 ISO	1500	AKPT580TAK	60-80
AKPT9P610	M6x1.0 ISO	900	AKPT610TAK	70-90
AKPT6P8125	M8x1.25 ISO	600	AKPT8125TAK	80-110
AKPT6P1015	M10x1.5 ISO	600	AKPT1015TAK	80-110
AKPT3P12175	M12x1.75 ISO	350	AKPT12175CTA	80-110

Spare Parts

Hex Drive	² Mandrel (10 Per Bag)	Bearing Set	Nose Cone
29NPT22	B3SH632-1500	32PT1	77AKPT6
29NPT23	B3SH832-1500	32PT2	77AKPT8
29NPT4	B3SH1024-1750	32PT4	77AKPT10
29NPT4	B3SH1032-1750	32PT4	77AKPT10
29NPT5	B3SH420-1500	32PT5	77AKPT250
29NPT6	B3SH518-2000	32PT7	77AKPT3125
29NPT7	B3SH616-2000	32PT8	77AKPT375
29NPT26	B3SH813-2500	30NPT500	77AKPT500
29NPT24	B3SH470-40	32PT3	77AKPT470
29NPT10	B3SH580-45	32PT4	77AKPT580
29NPT11	B3SH610-40	32PT6	77AKPT610
29NPT12	B3SH8125-50	32PT7	77AKPT8125
29NPT25	B3SH1015-50	32PT10	77AKPT1015
29NPT27	B3SH12175-60	30NPT500	77AKPTM12

Note: UNF Fine Threads are Available

² Special order only

Clay Diggers & Demolition Tools



Michigan Pneumatic

20 lb. & 30 lb. Class Clay Digger

Versatile, powerful tools designed for digging clay, cutting hard pan or loosening compacted or frozen ground. Ideal for trench digging and demolition work, excavating, cutting brick or asphalt and breaking light concrete. Latch-type retainer models allow operator to change chisels easily. Available in a variety of shanks and sizes. Please specify. Optional T-handle 0448052 available. Parts for MP-733 models are interchangeable with Ingersoll-Rand Model 73 and 93 diggers. Parts for MP-955 models are interchangeable with Ingersoll-Rand Model 75 and 95 diggers.

Model MP-733-LAT95-78
Clay Digger



Model MP-955T-LAT95
T-Handle Clay Digger



Model MP-955-LAT95-78
Clay Digger



Model MP-733-34
Clay Digger

273H-22
Hitch Cutter Retainer



Model No.	Shank Type	Piston Stroke	Piston Diameter	Blows Per Minute	Retainer Type	Length	Weight	Air Inlet Thread	Avg. Air Consumption
MP-733-34	3/4" Square x 2-3/4"	2-1/2"	1-11/16"	1500	Sleeve	19-1/4"	21.90 lbs.	3/8"	39 cfm
MP-733-78	7/8" Hex x 3-1/4"				Sleeve	19-1/4"	21.90 lbs.		
MP-733-LAT95-34	3/4" Square x 2-3/4"	2-1/2"	1-11/16"	1500	Latch	18-7/8"	26.30 lbs.	3/8"	39 cfm
MP-733-LAT95-78	7/8" Hex x 3-1/4"				Latch	18-7/8"	26.30 lbs.		
MP-955-34	3/4" Square x 2-3/4"	4-3/8"	1-11/16"	1200	Sleeve	21-3/4"	29.75 lbs.	3/8"	47 cfm
MP-955-78	7/8" Hex x 3-1/4"				Sleeve	21-3/4"	29.75 lbs.		
MP-955-LAT95-34	3/4" Square x 2-3/4"	4-3/8"	1-11/16"	1200	Latch	21-3/4"	35.25 lbs.	3/8"	47 cfm
MP-955-LAT95-78	7/8" Hex x 3-1/4"				Latch	21-3/4"	35.25 lbs.		
MP-955T-LAT95-34	3/4" Square x 2-3/4"	4-3/8"	1-11/16"	1200	Latch	30-3/4"	39.20 lbs.	3/8"	47 cfm
MP-955T-LAT95-78	7/8" Hex x 3-1/4"				Latch	30-3/4"	39.20 lbs.		



Michigan Pneumatic **Model MP-TCD18-78 - 7/8" Hex**
Model MP-TCD18-1 - 1" Hex

30 lb. Class Clay Digger

Heavy-duty machine for all construction applications, including digging clay, gravel, hard pan and frozen ground. Ideal for excavating in tunnels and other restricted quarters. Exceptional power for light demolition, wall breaking and stake driving. Available in 7/8" hex x 3-1/4" or 1" hex x 4-1/4". Please specify. Parts are interchangeable with Thor Model 18 digger.



Piston Stroke	3-3/8"	Length	22"
Piston Diameter	1-3/4"	Weight	30 lbs.
Blows Per Minute	1550	Air Inlet Thread	3/4"
Rec'd Hose Size	1/2"	Retainer Type	Latch

See pages 132-133 for clay digger chisels.

Pavement Breakers



MP-17
30 lb. Class



MP-23118
60 lb. Class



MP-91118
90 lb. Class



CP Style Pavement Breakers

Model No.	Shank Size	Piston Stroke	Piston Diameter	Blows Per Minute	Length	Weight	Rec'd Hose Size	Air Inlet Thread	Avg. Air Consumption
MP-17	1" Hex x 4-1/4"	5"	1-7/8"	1450	21"	40 lbs.		1/2"	48 cfm
MP-23118	1-1/8" Hex x 6"	5-1/2"	2-3/8"	1350	26"	64 lbs.		3/4"	64 cfm
MP-23114	1-1/4" Hex x 6"	5-1/2"	2-3/8"	1350	26"	64 lbs.	3/4"	3/4"	64 cfm
MP-91118	1-1/8" Hex x 6"	6-1/4"	2-5/8"	1250	28"	92 lbs.		3/4"	85 cfm
MP-91114	1-1/4" Hex x 6"	6-1/4"	2-5/8"	1250	28"	92 lbs.		3/4"	85 cfm

Hard hitting, heavy weight breaker features smooth operation for general use breaking asphalt, concrete and brick. Features extra-sturdy four bolt head-to-cylinder construction, full control throttle, efficient valve chest for low maintenance operation, drop-forged cylinder, replaceable front end bushing, chisel retainer latch and rubber hand grips.

Model Interchange

Chicago Pneumatic	Michigan Pneumatic
1210	MP-17
1230	MP-23118 / MP-23114
1240	MP-91118 / MP-91114



CB-153
40 lb. Class

Nippon Pneumatic Models CB-152 & CB-153 40 lb. Class Pavement Breakers

Lightweight, compact, hard hitting tools excellent for light and medium demolition work. Reduced recoil and shortened length make these breakers easy to operate. Ideal for bridge deck work. Available in 7/8" hex x 3-1/4" or 1" hex x 4-1/4" shank size. Please specify.

Model	CB-152	CB-153
Shank Size	7/8" Hex x 3-1/4"	1" Hex x 4-1/4"
Piston Stroke	1-3/8"	1-3/8"
Piston Diameter	1-1/2"	1-1/2"
Blows Per Minute	1300	1300
Length	21-1/8"	21-13/16"
Weight	38 lbs.	38 lbs.
Rec'd Hose Size	3/4"	3/4"
Air Inlet Thread	3/4"	3/4"
Avg. Air Consumption	50 cfm	50 cfm

See pages 132-133 for pavement breaker chisels.

Pavement Breakers



MP-30
30 lb. Class



MP-TPB60
60 lb. Class



MP-TPB90
90 lb. Class



Thor Style Pavement Breakers

Model No.	Shank Size	Piston Stroke	Piston Diameter	Blows Per Minute	Length	Weight	Rec'd Hose Size	Air Inlet Thread	Avg. Air Consumption
MP-30-78	7/8" Hex x 3-1/4"	3-3/8"	1-3/4"	1550	22-1/2"	33 lbs.	1/2"	3/8"	39 cfm
MP-30-1	1" Hex x 4-1/4"	3-3/8"	1-3/4"	1550	22-1/2"	33 lbs.	1/2"	3/8"	39 cfm
MP-TPB60-118	1-1/8" Hex x 6"	5"	2-1/4"	1400	25-3/8"	66 lbs.	3/4"	3/4"	58 cfm
MP-TPB60-114	1-1/4" Hex x 6"	5"	2-1/4"	1400	25-3/8"	66 lbs.	3/4"	3/4"	58 cfm
MP-TPB90-118	1-1/8" Hex x 6"	6-1/2"	2-5/8"	1200	28-3/4"	91 lbs.	3/4"	3/4"	75 cfm
MP-TPB90-114	1-1/4" Hex x 6"	6-1/2"	2-5/8"	1200	28-3/4"	91 lbs.	3/4"	3/4"	75 cfm

Hard hitting 30 and 60 lb. class tools for light and medium demolition work. Rugged, lightweight design is ideal for plant maintenance, breaking concrete floors or frozen ground and masonry walls. Features rubber hand grips for improved operator comfort and a swivel hose connection. Heavy-duty 90 lb. class designed for ripping out reinforced concrete and tearing out streets. Features durable, rugged pistons for extremely versatile demolition purposes.

Model Interchange

Thor Power Tool	Michigan Pneumatic
17	MP-30-78/MP-30-1
23	MP-TPB60-118/MP-TPB60-114
125	MP-TPB90-118/MP-TPB90-114



B37
30 lb. Class



MP-90-118
90 lb. Class



Gardner-Denver Model B37 Michigan Pneumatic Models MP-90-118 & MP-90-114 Pavement Breakers

Rugged designs ideal for plant maintenance. Model B37 ideal for bridge deck work. MP-90 series useful for reinforced concrete. **Most of the MP-90 series parts interchangeable with Ingersoll-Rand Model PB8A paving breaker.**

Model	B37	MP-90-118	MP-90-114
Shank Size	1" Hex x 4-1/4"	1-1/8" Hex x 6"	1-1/4" Hex x 6"
Piston Stroke	3-1/2"	6-1/4"	6-1/4"
Piston Diameter	1-7/8"	2-1/2"	2-1/2"
Blows Per Minute	1500	1200	1200
Length	21-1/4"	28"	28"
Weight	38 lbs.	90 lbs.	90 lbs.
Rec'd Hose Size	1/2"	3/4"	3/4"
Air Inlet Thread	3/4"	3/4"	3/4"
Avg. Air Consumption	32 cfm	85 cfm	85 cfm

See pages 132-133 for pavement breaker chisels.

Pavement Breaker/Clay Digger Tools & Accessories



Pavement Breaker Kits



Fits Tool Model No.	Latch Kit No.	Side Rod Kit No.
MP-30 MP-TCD18	LKIT-APT117	-
MP-6	LKIT-IRPB8	SRKIT-IRPB6
MP-90		SRKIT-IRPB8
MP-17	LKIT-CP1210	SRKIT-CP1210
MP-23118 MP-23114	LKIT-CP1230	SRKIT-CP1230
MP-91118 MP-91114	LKIT-CP1240	SRKIT-CP1240
MP-TPB60	LKIT-APT190	SRKIT-APT160
MP-TPB90		SRKIT-APT190
MP-955 (Old) MP-733 (Old)	LKIT-IR159	-
MP-733 (New) MP-955 (New)	LKIT-IR93LA1	-

Additional kits for other manufacturer models available.

Pavement Breaker Mufflers



Fits Tool Model No.	Part No.
MP-TPB60-118/MP-TPB60-114	6467
MP-TPB90-118/MP-TPB90-114	6052
CP-117	83-AM
MP-17	F814928
MP-23118 / MP-23114	R122152
MP-91118 / MP-91114	F814004



Narrow Chisel & Moid Point - Standard

Shank Size	Length Under Collar	Chisel No.	Point No.
7/8" x 3-1/4"	14"	923NC	1011
	18"	924	1012
	24"	924-2	1012-2
	36"	924-3	1012-3
1" x 4-1/4"	14"	925	1013
	18"	926	1014
	24"	926-2	1014-2
	36"	926-3	1014-3
1-1/8" x 6"	14"	1030	1019
	18"	1031	1020
	24"	1031-2	1020-2
	36"	1031-3	1020-3
1-1/4" x 6"	14"	1034	1023
	18"	1035	1024
	24"	1035-2	1024-2
	36"	1035-3	1024-3



Narrow Chisel & Moid Point - Super Duty

Shank Size	Length Under Collar	Chisel No.	Point No.
3/4" sq. x 2-3/4"	14"	1087C	1087P
	18"	1088C	1088P
7/8" hex x 3-1/4"	14"	923R	1011R
	18"	924R	1012R
1" hex x 4-1/4"	14"	925R	1013R
	18"	926R	1014R
1" hex x 6"	14"	1030R	1019R
	18"	1031R	1020R
1" hex x 6"	14"	1034R	1023R
	18"	1035R	1024R



3" Chisel

Shank Size	Length Under Collar	Part No.	
		Standard	Super Duty
7/8" x 3-1/4" (2-1/2" blade)	14"	934	934R
	18"	935WC	935R
	24"	935-2	-
	36"	935-3	-
1" x 4-1/4"	14"	936	936R
	18"	937	937R
	24"	937-2	-
	36"	937-3	-
1-1/8" x 6"	14"	1040WC	1040R
	18"	1041WC	1041R
	24"	1041-2	-
	36"	1041-3	-
1-1/4" x 6"	14"	1042WC	1042R
	18"	1043	1043R
	24"	1043-2	-
	36"	1043-3	-

Longer lengths available.

Pavement Breaker & Clay Digger Tools



Bushing Tool - 16 Teeth - 2" x 2" Face

Shank Size	Length Under Collar	Part No.
3/4" sq. x 2-3/4"	9"	851
7/8" hex x 3-1/4"		846
1" hex x 4-1/4"		847
1" hex x 6"		848
1" hex x 6"		849



Form Pin Driver - 3/4" Depth x 1-1/4" Diameter

Shank Size	Length Under Collar	Part No.
7/8" x 3-1/4"	8"	83-3
1" x 4-1/4"		B21991
1-1/8" x 6"		B31991
1-1/4" x 6"		B41991

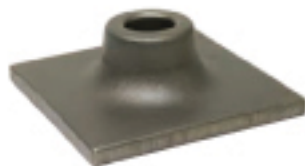


Detachable Shank - 1-5/8" Small Diameter For Tamping Pads & Sheathing Driver Shoes

Shank Size	Length Under Collar	Part No.
7/8" x 3-1/4"	9"	864DS
1" x 4-1/4"		865
1-1/8" x 6"		867DS
1-1/4" x 6"		868



7" Round Tamping Pad



8" Square Tamping Pad

Tamping Pads

Shank Size	Part No.
6" Square	968
7" Round	965RP
8" Square	969SP



Sheathing Driver Shoe

Shank Size	Part No.
2"	1051
3"	1052



Clay Spade - 5-1/2" Width x 8-1/2" Blade Length

Shank Size	Length Under Collar	Part No.
3/4" sq. x 2-3/4"	16-1/2"	1078
7/8" hex x 3-1/4"		962
1" hex x 4-1/4"		972
1-1/8" hex x 6"		1075
1-1/4" hex x 6"		1077



Asphalt Cutter - 5" Width x 6" Blade Length

Shank Size	Length Under Collar	Part No.
7/8" x 3-1/4"	11"	942
1" x 4-1/4"	12"	943
1-1/8" x 6"	12"	1045
1-1/4" x 6"	12"	1046



Digging Chisel - 3" Blade Width

Shank Size	Length Under Collar	Part No.
1" x 4-1/4"	16"	946
1-1/8" x 6"	15-1/2"	1048
1-1/4" x 6"	15-1/2"	1049



Asphalt Wedge - 3" Width x 6" Blade Length

Shank Size	Length Under Collar	Part No.
1" x 4-1/4"	12"	836
1-1/8" x 6"		837
1-1/4" x 6"		838



Frost Wedge - 2" Width x 12" Blade Length

Shank Size	Length Under Collar	Part No.
1" x 4-1/4"	17"	810
1-1/8" x 6"		812
1-1/4" x 6"		813

Longer lengths available.



Chicago Pneumatic Model CP-9A

Roto Hammer

Self-rotating hammer offers versatile service as a masonry drill or demolition tool in drilling hard materials such as bricks and concrete. With non-rotating chisels, the tool can be used for chipping and caulking jobs. Quick change chisel retainer allows fast conversion. Round bushing and clockwise rotation are standard. **NEW IMPORT MODEL MP-9B available. Accessories are listed below and on page 135.**



Blows Per Minute	3400	Weight	8 lbs.
Piston Diameter	1-1/4"	Air Inlet Thread	3/8"
Piston Stroke	1-3/8"	Avg. Air Consumption	20 cfm
Length	14-3/4"		

Solid Carbide Tipped Drills



Part No.	Size	Drill Depth
582CD	5/16"	8"
583	3/8"	
584	7/16"	
585	15/32"	
560	1/2"	
561		10"
562	5/8"	8"
563		12"
563-18		18"
564	3/4"	8"
565		12"
565-18		18"
566	7/8"	8"
567		12"
567-18		18"
568	1"	8"
569		12"
569-18		18"
569-24		24"
570	1-1/8"	8"
571		12"
571-18		18"
572	1-1/4"	8"
573		12"
573-18		18"
574	1-3/8"	8"
575		12"
575-18		18"
576	1-1/2"	8"
577		12"
577-18		18"
578	1-5/8"	8"
579		12"
580	1-3/4"	8"
581		12"

Non-Rotating Drills



Moil Point

Part No.	Length	Weight
4025	10"	2 lbs.



Flat Chisel

Part No.	Length	Weight
4021	10"	2 lbs.

SDS-Plus Adapter Model R137586

Converts CP-9B to accept SDS-Plus bits.
See page 135 for SDS-Plus bits



Rotating Star Drills



Size	Drill Depth		
	4"	8"	12"
	Part No.	Part No.	Part No.
3/8"	4030	4050	-
1/2"	4032	4052	-
5/8"	4034	4054	4070
3/4"	4036	4056	4072
7/8"	4038	4058	4074
1"	4040	4060	4076SD
1-1/8"	4042	4062	4078
1-1/4"	4044	4064	4080SD

Concrete Vibrators & Roto Hammer Accessories



NPK

Nippon Pneumatic **NRV-70**

Concrete Vibrator



Powerful, high-frequency vibrators for compaction of concrete to produce dense concrete. Ideal for pours of low slump concrete in walls, columns and close quarters. Rugged, efficient, and easily maneuvered. All vibrators are equipped with 8 ft. exhaust hose.



Roll Throttle

Vibrating Force	658 kg-F	Head Weight	25.3 lbs.
Vibrations Per Minute.....	11500	Air Inlet Thread	3/8"
Head Diameter.....	3"	Air Consumption.....	45 cfm
Head Length.....	15-3/4"		

Chicago Pneumatic **CP-618**

Concrete Vibrator

Designed for mass concrete containing up to 6" aggregate deposited from 8-yard buckets, in gravity dams, large piers, massive walls, etc.



Vibrations Per Minute.....	7000
Net Weight	65 lbs.
Overall Length	50-1/2"
Vibrator Tube Length.....	21"
Vibrator Tube Diameter	5-3/4"
Avg. Air Consumption	85 cfm

SDS-Plus Bits



Designed for drilling concrete, brick, stone and other masonry materials. All tips are exclusively "HL Grade" (HL20) carbide. Each shaft is shot-peened for torque twist protection and annealed shafts help prevent breakage.

SDS-Plus bits fit all rotary hammers with SDS-Plus and Hilti chucks. The maximum energy per hammer blow is delivered through positive drive slots. Special asymmetrical spiral, undercut double fluting design removes debris more efficiently to reduce heat and extend drill life. Drills 15% faster than the average drill bit.

SDS-Plus Shank

Part No.	Size	Drill Depth	Overall Length
90006	3/16"	4"	6"
90007		6"	8"
90004		8"	10"
90008		10"	12"
90010	1/4"	2"	4"
90013		3"	6"
90014		6"	8"
90016		8"	10"
90028	3/8"	4"	6"
90029		6"	8"
90031		8"	10"
90037	7/16"	4"	6"
90040	1/2"	4"	6"
90041		8"	10"
90043		10"	12"

SDS-Plus Shank

Part No.	Size	Drill Depth	Overall Length
90048	9/16"	4"	6"
90052	5/8"	4"	6"
90053		6"	8"
90055		10"	12"
90059	3/4"	6"	8"
90060		8"	10"
90061		10"	12"
90063		16"	18"
90065	5/8"	6"	8"
90067		8"	12"
90069		16"	18"
90071	1"	8"	10"
90076		16"	18"

Concrete Vibrators & Roto Hammer Accessories



NPK

Nippon Pneumatic **NRV-70**

Concrete Vibrator



Powerful, high-frequency vibrators for compaction of concrete to produce dense concrete. Ideal for pours of low slump concrete in walls, columns and close quarters. Rugged, efficient, and easily maneuvered. All vibrators are equipped with 8 ft. exhaust hose.



Roll Throttle

Vibrating Force	658 kg-F	Head Weight	25.3 lbs.
Vibrations Per Minute.....	11500	Air Inlet Thread	3/8"
Head Diameter.....	3"	Air Consumption.....	45 cfm
Head Length.....	15-3/4"		

Chicago Pneumatic **CP-618**

Concrete Vibrator

Designed for mass concrete containing up to 6" aggregate deposited from 8-yard buckets, in gravity dams, large piers, massive walls, etc.



Vibrations Per Minute.....	7000
Net Weight	65 lbs.
Overall Length	50-1/2"
Vibrator Tube Length.....	21"
Vibrator Tube Diameter	5-3/4"
Avg. Air Consumption	85 cfm

SDS-Plus Bits



Designed for drilling concrete, brick, stone and other masonry materials. All tips are exclusively "HL Grade" (HL20) carbide. Each shaft is shot-peened for torque twist protection and annealed shafts help prevent breakage.

SDS-Plus bits fit all rotary hammers with SDS-Plus and Hilti chucks. The maximum energy per hammer blow is delivered through positive drive slots. Special asymmetrical spiral, undercut double fluting design removes debris more efficiently to reduce heat and extend drill life. Drills 15% faster than the average drill bit.

SDS-Plus Shank

Part No.	Size	Drill Depth	Overall Length
90006	3/16"	4"	6"
90007		6"	8"
90004		8"	10"
90008		10"	12"
90010	1/4"	2"	4"
90013		3"	6"
90014		6"	8"
90016		8"	10"
90028	3/8"	4"	6"
90029		6"	8"
90031		8"	10"
90037	7/16"	4"	6"
90040	1/2"	4"	6"
90041		8"	10"
90043		10"	12"

SDS-Plus Shank

Part No.	Size	Drill Depth	Overall Length
90048	9/16"	4"	6"
90052	5/8"	4"	6"
90053		6"	8"
90055		10"	12"
90059	3/4"	6"	8"
90060		8"	10"
90061		10"	12"
90063		16"	18"
90065	5/8"	6"	8"
90067		8"	12"
90069		16"	18"
90071	1"	8"	10"
90076		16"	18"

NPK®



RHL-500
1/2 Ton Capacity

RHL-1000
1 Ton Capacity

Efficient, High Speed Material Handling

NPK air hoists are engineered to provide high lifting speeds and accurate control. Lightweight, compact design for use in a stationary position, but can also be quickly moved to another location. Air hoists are extremely useful in hazardous environments where electrical hoists are prohibited. Features external brake adjustment, exhaust muffler, built-in lubricator and swivel mounted air inlet.

Extra Rugged Construction

Durable construction for constant, heavy-duty use. Designed for fast moving production assembly operations and heavy manufacturing industries.

Overload-Proof Air Motor for a Wide Safety Margin

The rotary vane air motor is completely enclosed. Motor is unaffected by fumes, dirt or heat. Motor and controls can withstand constant stopping and sudden starting. Can be overloaded or stalled without damage to the hoist. Motor is inherently self-cooling and cannot be burned out.

Safety Hooks and Automatic Limit Stops

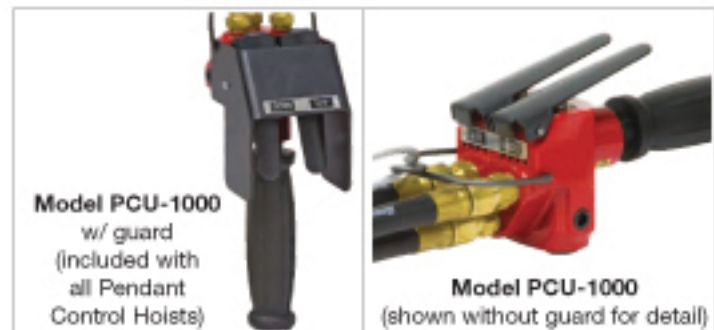
Top and bottom hooks have safety snaps and hoist has automatic limit stops to prevent overtravel.

Variable Speed Control

Operator can choose any speed from the slowest creep to full throttle. The heaviest loads can be positioned quickly and accurately, or raised rapidly. Features an external screw adjustment for lift and descent speeds.

Pendant Type Control

Leaves the operator one hand free to guide the load with precise control. Preferred compact design and easy handling.



Model PCU-1000
w/ guard
(included with
all Pendant
Control Hoists)

Model PCU-1000
(shown without guard for detail)

Caution

This equipment is not to be used for lifting, supporting or transporting people, or for lifting or supporting loads over people.

Model No.	Chain Type	Capacity	Control	Standard Lift	No. of Falls	Std. Load Chain	Headroom	Lift Speed at Capacity	Weight (Lbs.)	Rec'd Hose Size	Air Inlet Thread	CFM
RHL-250 RHL-250P	Link	550 lbs.	Pullcord Pendant	8 ft.	1	9 ft.	17"	88.6 ft./min.	35.2 39.6	1/2"	1/2"	45.9
RHL-500 RHL-500P	Link	1100 lbs.	Pullcord Pendant	8 ft.	1	9 ft.	17"	41.3 ft./min.	35.2 39.6	1/2"	1/2"	45.9
RHL-1000 RHL-1000P	Link	2200 lbs.	Pullcord Pendant	8 ft.	2	18 ft.	20"	18.7 ft./min.	48.4 51.7	1/2"	1/2"	45.9
RHL-2800	Link	6160 lbs.	Pullcord	10 ft.	2	25 ft.	28"	7.2 ft./min.	132.0	3/4"	1/2"	60.0

Extra lift can be installed for an additional charge. Link chain hoists equipped with chain basket. Most parts for the above hoists are interchangeable with ARO, Chicago Pneumatic and Yale hoists.



Stock No. 101704

JET SMH Series Hand Chain Hoists

- Full range capacity 1/2 to 10-tons
- Standard features found only in higher priced models
- Economical hand chain hoist designed for years of trouble-free service
- All steel construction with a durable powder coat finish
- Lightweight, compact design for low headroom applications
- Needle bearing supported load sheave for smooth operation
- Completely enclosed Weston type automatic brake system for precise load spotting
- Triple-spur gears provide high efficiency ratio with minimum effort
- Induction hardened grade 80 load chain
- Drop forged hooks with heavy-duty safety latches swivel 360° for easy rigging
- Smooth rolled edge on hand chain cover prevents side pull jamming
- Standard hand chain drop equals lift length
- Proof tested with test certificate
- Complies with OSHA, ANSI/ASME B30.16 and HST-2 standards

CAUTION

Be sure that the supporting structures and load-attaching devices used in conjunction with this hoist provide an adequate safety factor to handle the rated load plus the weight of the equipment. If in doubt, consult a qualified structural engineer. **This equipment is not to be used for lifting, supporting or transporting people, or lifting or supporting loads over people.**

IMPORTANT

Before installation, read owner's manual for additional warnings and precautions. Not for use in an explosive environment.

Stock No.	Model	Capacity (Lbs.)	Standard Lift (Ft.)	Headroom (In.)	Number of Falls	Load Chain (Dia./MM)	Req. Hand Chain (Ft.) to Lift Load 1'	Pounds Pull to Lift Capacity	Ship Weight (Lbs.)
101700	SMH-1/2T-10	1100	10	13	1	5.0	32	49	20
101702	SMH-1/2T-20		20						29
101704	SMH-1T-10	2200	10	15	1	6.3	37	80	27
101706	SMH-1T-20		20						38
101708	SMH-1-1/2T-10	3520	10	17-1/2	1	7.0	58	82	41
101710	SMH-1-1/2T-20		20						56
101712	SMH-2T-10	4400	10	18-1/2	1	8.0	70	91	46
101714	SMH-2T-20		20						60
101716	SMH-3T-10	6820	10	23-1/2	2	7.0	116	86	60
101718	SMH-3T-20		20						80
101720	SMH-5T-10	11000	10	28	2	9.0	172	97	91
101722	SMH-5T-20		20						122
101724	SMH-10T-10	22000	10	35	4	9.0	344	104	177
101726	SMH-10T-20		20						232



Stock No. 101505

JET L-90 Series Hand Chain Hoists

- Full range capacity 1/2 to 10-tons
- Compact and portable for each of positioning material
- Engineered for commercial and industrial lifting applications
- All steel construction with a durable powder coat finish
- Lightweight, compact design for low headroom applications
- Completely enclosed Weston type automatic brake system for positive load spotting
- Triple-spur gears provide high efficiency ratio with minimum effort
- Heat treated and hardened grade 80 load chain
- Smooth rolled edge on hand chain cover prevents side pull jamming
- Wide throat drop forged safety hooks for easier rigging
- Standard hand chain drop equals lift length
- Proof tested with test certificate
- Complies with OSHA, ANSI/ASME B30.16 and HST-2 standards

CAUTION

Be sure that the supporting structures and load-attaching devices used in conjunction with this hoist provide an adequate safety factor to handle the rated load plus the weight of the equipment. If in doubt, consult a qualified structural engineer. **This equipment is not to be used for lifting, supporting or transporting people, or lifting or supporting loads over people.**

IMPORTANT

Before installation, read owner's manual for additional warnings and precautions. Not for use in an explosive environment.

Stock No.	Model	Capacity (Lbs.)	Standard Lift (Ft.)	Headroom (In.)	Number of Falls	Load Chain (Dia./MM)	Req. Hand Chain (Ft.) to Lift Load 1'	Pounds Pull to Lift Capacity	Ship Weight (Lbs.)
101505 101306	L-90-1/2T-10 L-90-1/2T-20	1100	10 20	10-3/4	1	5.0	29	59	23 32
101510 101311	L-90-1T-10 L-90-1T-20	2200	10 20	11-3/4	1	6.3	50	69	29 40
101515 101316	L-90-1-1/2T-10 L-90-1-1/2T-20	3520	10 20	13-1/4	1	7.1	60	91	37 52
101520 101320	L-90-2T-10 L-90-2T-20	4400	10 20	14-3/4	1	8.0	77	88	48 63
101530 101330	L-90-3T-10 L-90-3T-20	6820	10 20	20-7/8	2	7.1	120	88	56 75
101550 101350	L-90-5T-10 L-90-5T-20	11000	10 20	24-1/2	2	9.0	190	106	97 132
101560 101565	L-90-10T-11-1/2 L-90-10T-20	22000	11-1/2 20	30-1/2	4	9.0	385	116	209 242

JET L-100 Series

Hand Chain Hoists

- Full range capacity 1/2 to 10-tons
- Compact and portable for ease of positioning material
- Engineered for commercial and industrial lifting applications
- All steel construction with a durable powder coat finish
- Lightweight, compact design for low headroom applications
- Completely enclosed Weston type automatic brake system for positive load spotting
- Triple-spur gears provide high efficiency ratio with minimum effort
- Heat treated and hardened grade 80 load chain
- Smooth rolled edge on hand chain cover prevents side pull jamming
- Wide throat drop forged safety hooks for easier rigging
- Standard hand chain drop equals lift length
- Proof tested with test certificate
- Complies with OSHA, ANSI/ASME B30.16 and HST-2 standards

CAUTION

Be sure that the supporting structures and load-attaching devices used in conjunction with this hoist provide an adequate safety factor to handle the rated load plus the weight of the equipment. If in doubt, consult a qualified structural engineer. **This equipment is not to be used for lifting, supporting or transporting people, or lifting or supporting loads over people.**

IMPORTANT

Before installation, read owner's manual for additional warnings and precautions. Not for use in an explosive environment.

OVERLOAD
PROTECTION



Stock No. 107100

Stock No.	Model	Capacity (Lbs.)	Standard Lift (Ft.)	Headroom (In.)	Number of Falls	Load Chain (Dia./MM)	Req. Hand Chain (Ft.) to Lift Load 1'	Pounds Pull to Lift Capacity	Ship Weight (Lbs.)
104100 205120	L-100-50WO-10 L-100-50WO-20	1100	10 20	11-1/4	1	5.0	25	53	24.00 34.00
102100 203120	L-100-1TWO-10 L-100-1TWO-20	2200	10 20	11-5/8	1	6.3	43	64	27.00 39.25
101100 201120	L-100-150WO-10 L-100-150WO-20	3300	10 20	13-3/4	1	7.1	57	77	34.25 48.00
105100 206120	L-100-200WO-10 L-100-200WO-20	4400	10 20	14-3/4	1	8.0	70	79	44.00 59.00
106100 207120	L-100-300WO-10 L-100-300WO-20	6600	10 20	20-1/8	2	7.1	114	79	53.00 74.00
107100 208120	L-100-500WO-10 L-100-500WO-20	11000	10 20	23-5/8	2	9.0	198	75	90.00 119.50
108100 209120	L-100-1000WO-10 L-100-1000WO-20	22000	10 20	29-7/8	4	9.0	396	79	174.00 227.00



JET JLH Series

Lever Hoists

- 3/4-ton to 6-ton Capacities
- Available in 5ft, 10ft, and 20ft lifts
- Light weight, compact design for low head room applications
- All units feature premium 100 grade chain for extreme wear resistance
- Patented fused break disc design for low maintenance
- Caged roller bearings used on load sprocket increase ease of use and efficiency
- Lever Hoist with Overload Protection

CAUTION

Be sure that the supporting structures and load-attaching devices used in conjunction with this hoist provide an adequate safety factor to handle the rated load plus the weight of the equipment. If in doubt, consult a qualified structural engineer. **This equipment is not to be used for lifting, supporting or transporting people, or lifting or supporting loads over people.**

IMPORTANT

Before installation, read owner's manual for additional warnings and precautions. Not for use in an explosive environment.



Stock No. 210010

Stock No.	Model No.	Capacity (Tons)	Capacity (Lbs.)	Standard Lift (Ft.)	Headroom (In.)	Number of Falls	Load Chain (dia/mm)	Lever Length (In.)	Pounds of Pull To Lift Capacity	Lift Per Full Turn of Lever (In.)	Weight (Lbs.)
375005	JLH-80WO-5	0.8	1760	5	11	1	5.6	9-5/8	64	1-1/8	12.50
375010	JLH-80WO-10			10							15.00
375020	JLH-80WO-20			20							19.50
315005	JLH-160WO-5	1.6	3520	5	13.1	1	7.1	10-3/8	75	7/8	17.50
315010	JLH-160WO-10			10							21.25
315020	JLH-160WO-20			20							28.50
330050	JLH-320WO-5	3.2	7040	5	15.5	1	10	16-5/16	82	3/4	30.00
330100	JLH-320WO-10			10							38.00
330200	JLH-320WO-20			20							53.00
360005	JLH-630WO-5	6.3	13860	5	21.2	1	10	16-5/16	84	3/8	57.25
360010	JLH-630WO-10			10							72.00
360020	JLH-630WO-20			20							103.00

JET JLP Series

Lever Hoists

- Economical lever hoist designed for years of trouble-free operation
- 3/4-ton to 6-ton capacities
- 5', 10', and 20' lifts available
- All steel construction with a durable powder coat finish
- Completely enclosed Weston type automatic brake system holds load in any position
- Easy-to-use with single hand operation and control
- Simple design makes routine inspection and maintenance easy
- Freewheeling feature without load for quick load attachment
- Hardened grade 80 low wear chain
- Drop forged hooks with heavy-duty safety latches swivel 360° for easy rigging
- Proof tested with test certificate
- Complies with OSHA, ANSI/ASME B30.21 and HST-3 standards

CAUTION

Be sure that the supporting structures and load-attaching devices used in conjunction with this hoist provide an adequate safety factor to handle the rated load plus the weight of the equipment. If in doubt, consult a qualified structural engineer. **This equipment is not to be used for lifting, supporting or transporting people, or lifting or supporting loads over people.**

IMPORTANT

Before installation, read owner's manual for additional warnings and precautions. Not for use in an explosive environment.



Stock No. 187711

Stock No.	Model	Rated Capacity (Ton)	Standard Lift (Ft.)	Min. Distance Between Hooks (In.)	No. of Falls	Load Chain (Dia./MM)	Lever Length (In.)	Pounds Pull to Lift Capacity	Lift Per Full Turn of Lever (In.)	Ship Weight (Lbs.)	
187707	JLP-75-5	3/4	5	12-7/16	1	6	10-1/4	32	3/4	17	
187708	JLP-75-10		10							20	20
187710	JLP-75-20		20							25	
187711	JLP-150-5	1-1/2	5	14	1	8	16-1/8	42	7/8	28	
187712	JLP-150-10		10							33	
187714	JLP-150-20		20							43	
187716	JLP-300-5	3	5	19-3/4	1	10	16-1/8	72	5/8	46	
187716	JLP-300-10		10							54	
187718	JLP-300-20		20							69	
187719	JLP-600-5	6	5	24-7/16	2	10	16-1/8	76	5/8	68	
187720	JLP-600-20		20							113	

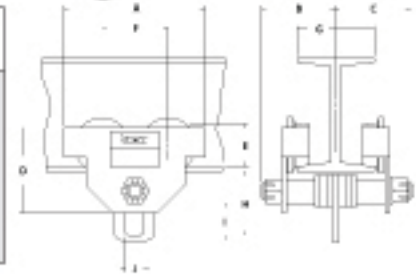
JET PT Series Industrial-Duty Plain Trolleys

- Designed for low maintenance and trouble-free operation through a wide range of beams
- 1/2 ton to 10-ton capacity
- For use with wide-flange H-beams, standard I-beams, or curved track
- Multiple spacer washers make beam flange width adjustment quick and easy
- Rugged steel side plates feature built-in bumper guards
- Hardened wheels with lubricated for life, double sealed ball bearings
- Proof tested with test certificate
- Compliance: OSHA, ANSI/ASME B30.11 and B30.17 standards



Stock No. 252015

Stock No.	Model	Capacity (Ton)	Beam Flange Width (In.)	Beam Height (Ft.)	Min. Radius Curve (In.)	Ship Weight (Lbs.)
252005	1/2 PT	1/2	2-1/2 – 8		39	20
252010	1 PT	1	3 – 8		39	34
252015	1-1/2 PT	1-1/2	3-1/4 – 8		43	43
252020	2 PT	2	3-1/4 – 8	4 – 19	43	52
252030	3 PT	3	4 – 8		51	88
252050	5 PT	5	4-5/8 – 8		55	129
252060	10 PT	10	4-3/4 – 8		67	213



Dimensions (In.)

Model	A	B	C	D	E	F	G	H	I	J
1/2 PT	8-3/8"	6-3/16"	6-3/16"	5-1/8"	2-5/16"	4"	2-1/2" – 8	4"	1-9/16"	15/16"
1 PT	9-15/16"	6-1/2"	6-1/2"	6-1/8"	2-15/16"	4-5/8"	3" – 8	4-1/2"	1-15/16"	1-3/16"
1-1/2 PT	10-7/8"	6-5/8"	6-5/8"	6-3/8"	3-3/8"	4-7/8"	3-1/4" – 8	5-1/8"	2-1/2"	1-5/16"
2 PT	11-7/8"	6-7/8"	6-7/8"	6-11/16"	3-9/16"	5-3/8"	3-1/4" – 8	5-1/4"	2-9/16"	1-7/16"
3 PT	13-5/8"	7-5/16"	7-5/16"	8-9/16"	4-5/16"	6-3/16"	4" – 8	6-5/8"	3"	1-3/4"
5 PT	15-1/16"	7-7/8"	7-7/8"	10-1/16"	4-13/16"	6-3/4"	4-5/8" – 8	7-7/8"	3-13/16"	2-3/8"
10 PT	17-15/16"	8-1/2"	8-1/2"	11-5/8"	5-15/16"	7-7/8"	4-3/4" – 8	10-1/8"	5"	3-1/4"

JET SBC Series Industrial-Duty Beam Clamps

- For construction, commercial and industrial vertical or horizontal rigging operations
- 1-ton to 5-ton capacities
- Mount hoists or lift beams with portable lightweight clamp
- Adjusts with ease to fit a broad range of wide-flange H or standard I-beams
- Clamp jaw designed to distribute the load away from beam flange edge
- Low headroom with built-in suspension rod
- Proof tested with test certificate
- Compliance: ANSI/ASME B30.17 and B30.20 standards



Stock No. 252720

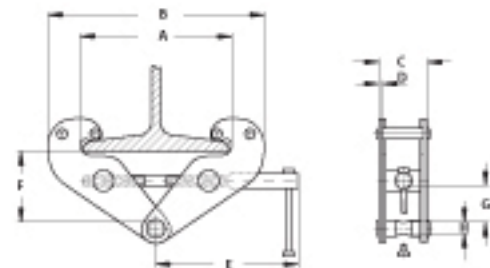
CAUTION

Read owners manual for additional warnings and precautions before use. Failure to read, understand and follow all instructions can result in serious injury. Do not exceed rated capacity. Use clamp only if authorized and properly trained. Do not move unbalanced load. Not for use in explosive environment.

Stock No.	Model	Capacity (Lbs.)	Beam Flange Width (In.)	Ship Weight (Lbs.)
252710	JBC-1	2000	2-31/32-8-21/32	12 lbs.
252720	JBC-2	4000	2-31/32-8-21/32	14 lbs.
252730	JBC-3	6000	3-15/16-9-2/32	27 lbs.
252750	JBC-5	10000	4-15/16-10-5/8	34 lbs.

Dimensions (In.)

Model	Dim. (In.) Max A	Min B	Max B	C	D	E	Max F	Min F	Min G	H
JBC-1	9-21/32	7-3/32	14-11/64	2-3/4	13/64	9-9/32	5-5/16	3-35/64	1-3/16	13/16
JBC-2	9-21/32	7-3/32	14-11/64	2-29/32	1/4	9-9/32	5-5/16	3-35/64	1-3/16	13/16
JBC-3	11-5/8	9-27/32	17-11/32	4-21/32	5/16	10-1/4	6-11/16	4-11/32	2-11/64	1
JBC-5	11-7/32	10-7/16	19-3/32	5-1/2	25/64	10-1/4	6-15/16	4-15/16	2-3/64	1-7/64



JET JHJ Series

Heavy-Duty Industrial Bottle Jacks

- For lifting, pushing, spreading, bending, pressing or straightening requirements
- Not affected by temperature extremes
- Low profile truck models or standard models
- Electrically welded base and cylinders to assure strength and eliminate leaks
- All models work in upright, angle or horizontal position
- Pump handle included
- Carrying handles on 12-1/2 to 100-ton models
- Complies with ANSI/ASME B30.1 and PALD-1 standards

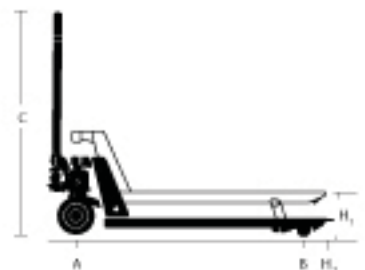


Stock No.	Model	Rated Capacity (Ton)	Minimum Height (In.)	Piston Height (In.)	Head Screw (H/in.)	Max. Height (In.)	Base Size (LXW/In.)	Ship Weight (Lbs.)
453301	JHJ-2	2	7-1/8	4-1/2	2	13-5/8	4-1/2 x 2-1/2	5
453303	JHJ-3	3	7-1/2	4-1/2	2-3/8	14-3/8	4-9/16 x 2-13/16	6
453305	JHJ-5	5	7-7/8	4-5/8	2-3/4	15-1/2	5-5/8 x 3-1/4	9
453308	JHJ-8	8	7-7/8	4-5/8	2-3/4	15-1/2	6 x 3-1/2	13
453312	JHJ-12 1/2	12-1/2	9-1/2	5-7/8	3-1/8	18-1/2	6-1/2 x 4-1/8	18
453313K	JHJ-12 1/2L	12-1/2	6-3/4	3-3/4	3	13-3/8	6-1/2 x 4-1/8	15
453317	JHJ-17 1/2	17-1/2	10-3/8	6-1/2	3-1/8	20	7-1/8 x 4-5/8	24
453318K	JHJ-17 1/2L	17-1/2	6-3/4	3-1/2	2-3/4	13	7-1/8 x 4-5/8	19
453322	JHJ-22 1/2	22-1/2	10-5/8	6-1/4	-	16-7/8	7-1/8 x 5-1/2	28
453323K	JHJ-22 1/2L	22-1/2	7-1/8	3-3/8	1-1/2	12	7-1/4 x 5-1/16	23
453335K	JHJ-35	35	11	6-1/4	-	17-1/4	8-3/8 x 5-1/2	48
453360K	JHJ-60	60	12	6-3/4	-	8-5/8	9-1/4 x 7-3/8	82
453399K	JHJ-100	100	12	5-23/32	-	17-11/16	14-31/32 x 10-7/16	225

JET PTX & JTX Series

Pallet Trucks

- One-piece cast pump features high quality seals, hardened and chrome plated ram and piston, top-of stroke and overload bypass valves
- Rounded fork tips with nylon guide rollers for trouble-free pallet entry and exit
- Solid steel push rod never needs adjustment
- 210° turning radius
- Large 8" poly over aluminum steering wheels feature double sealed, life time lubricated bearings (*JTX Model*)
- 2-1/2" turning radius (*PTX Model*)



Dimensions (In.)

Stock No.	Model	Capacity	W1	W2	L1	L2	H1	H2	A	B	C	Ship Weight (Lbs.)
140093	PTX-2748	5500 lbs.	27	6	48	63	6-1/4	2-1/2	7 x 2	2-1/2 x 3-3/4	47-1/4	196
140800	JTX-2748	8000 lbs.	27	6-1/4	48	63-1/2	6-1/4	3-1/4	8 x 2	3-1/4 x 3-1/2	49-1/4	240

Air Tuggers



Michigan Pneumatic

Short Drum Tuggers

Light, compact tuggers designed for low air consumption and high efficiency. Can be mounted to a wall, floor or ceiling. Can also be mounted to a portable compressor and moved from one job to another. *Allow 120 days for delivery.



Model MP-W05AA3SACMB



Model MP-W10220SACMB



Model MP-W20220SACMB

Michigan Pneumatic Manual Brake Models

Short Drum Model No.	Capacity	Line Speed @ Capacity	Cable Capacity						Air Inlet Thread	Weight w/o Rope
			1/4"	5/16"	3/8"	7/16"	1/2"	5/8"		
MP-W05AA3SACMB	1100 lbs.	62 ft.	213 ft.	147 ft.	-	-	-	-	3/4"	97 lbs.
MP-W10220SACMB	2000 lbs.	121 ft.	-	-	688 ft.	475 ft.	383 ft.	-	1"	566 lbs.
MP-W20220SACMB	4400 lbs.	62 ft.	-	-	-	476 ft.	384 ft.	-	1"	586 lbs.
MP-W3036SACMB	6600 lbs.	62 ft.	-	-	-	-	-	525 ft.	1-1/4"	1035 lbs.



Model MP-W10220SAAB



Model MP-W20220SAAB



Drum Guards

Part No.	Fits Tool Model No.
E302-104G	MP-W05 Series
E398-003G	MP-W10220LAAB
	MP-W10220LACMB
	MP-W20220LAAB
E398-001G	MP-W10220SAAB
	MP-W10220SACMB
	MP-W20220SAAB
	MP-W20220SACMB
E398-007G	MP-W3036LAAB
	MP-W3036LACMB
E305-013G	MP-W5036LAAB
	MP-W5036LACMB

Michigan Pneumatic Automatic Brake Models

Short Drum Model No.	Capacity	Line Speed @ Capacity	Cable Capacity						Air Inlet Thread	Weight w/o Rope
			1/4"	5/16"	3/8"	7/16"	1/2"	5/8"		
MP-W05AA3SAAB *	1100 lbs.	62 ft.	213 ft.	147 ft.	-	-	-	-	3/4"	104 lbs.
MP-W10220SAAB	2000 lbs.	121 ft.	-	-	688 ft.	475 ft.	383 ft.	-	1"	588 lbs.
MP-W20220SAAB *	4400 lbs.	62 ft.	-	-	-	476 ft.	384 ft.	-	1"	608 lbs.
MP-W3036SAAB *	6600 lbs.	62 ft.	-	-	-	-	-	525 ft.	1-1/4"	1066 lbs.

Remote control units available for most models.

Air Tuggers



Michigan Pneumatic

Long Drum Tuggers

Light, compact tuggers designed for low air consumption and high efficiency. Can be mounted to a wall, floor or ceiling. Can also be mounted to a portable compressor and moved from one job to another. ***Allow 120 days for delivery.**



Model MP-HUL



Model MP-W3036LACMB



Model MP-W5036LACMB
4 Piston Unit (shown)

NEW MODEL

Model MP-W5045LACMB
5 Piston Unit (not shown)

Michigan Pneumatic Manual Brake Models

Long Drum Model No.	Capacity	Line Speed @ Capacity	Cable Capacity						Air Inlet Thread	Weight w/o Rope
			3/8"	7/16"	1/2"	5/8"	3/4"	7/8"		
MP-HUL	2000 lbs.	110 ft.	1445 ft.	1012 ft.	813 ft.	-	-	-	1"	562 lbs.
MP-W10220LACMB	2000 lbs.	121 ft.	1378 ft.	951 ft.	788 ft.	-	-	-	1"	608 lbs.
MP-W20220LACMB	4400 lbs.	62 ft.	-	952 ft.	768 ft.	-	-	-	1"	632 lbs.
MP-W3036LACMB	6600 lbs.	62 ft.	-	-	-	1050 ft.	-	-	1-1/4"	1130 lbs.
MP-W5036LACMB	11000 lbs.	36 ft.	-	-	-	-	820 ft.	755 ft.	1-1/4"	1890 lbs.
MP-W5045LACMB	11000 lbs.	59 ft.	-	-	-	-	-	750 ft.	2"	1958 lbs.



Model MP-W20220LAAB



Model MP-W3036LAAB



Model MP-W5036LAAB

Michigan Pneumatic Automatic Brake Models

Long Drum Model No.	Capacity	Line Speed @ Capacity	Cable Capacity						Air Inlet Thread	Weight w/o Rope
			3/8"	7/16"	1/2"	5/8"	3/4"	7/8"		
MP-W10220LAAB *	2000 lbs.	121 ft.	1378 ft.	951 ft.	768 ft.	-	-	-	1"	635 lbs.
MP-W20220LAAB *	4400 lbs.	62 ft.	-	952 ft.	768 ft.	-	-	-	1"	654 lbs.
MP-W3036LAAB *	6600 lbs.	62 ft.	-	-	-	1050 ft.	-	-	1-1/4"	1161 lbs.
MP-W5036LAAB	11000 lbs.	36 ft.	-	-	-	-	820 ft.	755 ft.	1-1/4"	1923 lbs.

Remote control units available for most models.

Rotary Cutters & Panel Saws



Michigan Pneumatic Model MP-210-CUT Utility Cut-Off Tool

Very versatile tool features a metal guard and an OSHA approved safety lever throttle. Cuts through bolts, shackles and steel rods up to 3/4" diameter. Rips through sheet metal with ease. Ideal for auto body and muffler repairs.

122060 Package of 6 Replacement Wheels

Capacity	3"	Weight	1.75 lbs.
Free Speed	20000 rpm	Air Inlet Thread	1/4"
Length	7-3/4"	Avg. Air Consumption	5 cfm



Michigan Pneumatic Model MP-3801A-F Utility Cut-Off Tool

Heavy-duty shear and grinder in one. Cuts through muffler clamps, hangers, sheet metal and steel rods up to 3/4" thick with ease. Great for auto body repairs. **IMPORT MODEL MP-3801-ST available.**

122060 Package of 6 Replacement Wheels

Capacity	3"	Weight	1.75 lbs.
Free Speed	20000 rpm	Air Inlet Thread	1/4"
Length	7"	Avg. Air Consumption	5 cfm



3-1/4"

Diabrade Model 80-4HD 4" Heavy-Duty Fiberglass Trimmer

Compact, precision saw for the glass-reinforced plastic industry. Fast, powerful cutting with effective dust extraction. Exhaust air is directed away from the operator.

72C4B4 Continuous Rim Blade
72S4B4 Side Spoke Blade
72G4B4 Slotted Blade

Blade Diameter	4"	Length	11"
Depth of Cut	29/32"	Weight	4.5 lbs.
Free Speed	12000 rpm	Air Inlet Thread	1/4"
Maximum HP	1.00	Avg. Air Consumption	24 cfm



3-1/4"

Diabrade Model 80-5HD 5" Heavy-Duty Fiberglass Trimmer

Ideal saw for the glass-reinforced plastic industry. Dust extraction cowl directs exhaust away from the operator.

72C5B4 Continuous Rim Blade
72S5B4 Side Spoke Blade
72G5B4 Slotted Blade

Blade Diameter	5"	Length	11-1/2"
Depth of Cut	1-13/32"	Weight	5 lbs.
Free Speed	12000 rpm	Air Inlet Thread	1/4"
Maximum HP	1.00	Avg. Air Consumption	24 cfm



4-3/16"

Diabrade Model 80-7HD15 7" Heavy-Duty Fiberglass Trimmer

Heavy duty trimmer designed for the glass-reinforced plastic industry. Powerful 1.5HP motor allows for fast precision cutting. Dust extraction cowl directs exhaust away from the operator.

72GS7B868 Gulletted Side Spoke Blade

Blade Diameter	7"	Length	13-3/4"
Depth of Cut	2"	Weight	11.75 lbs.
Free Speed	7100 rpm	Air Inlet Thread	3/8"
Maximum HP	1.50	Avg. Air Consumption	42 cfm

Circular Saw & Rotary Cutters



Blade not included.

Michigan Pneumatic Model MP-SG0826

Circular Saw

General purpose saw featuring a swiveling saw rest for angled cuts.

Blade Diameter.....	7-1/4"	Length.....	11-1/2"
Max. Depth of Cut.....	2-23/64"	Weight.....	10.5 lbs.
Free Speed.....	4500 rpm	Air Inlet Thread.....	1/4"
Maximum HP.....	1.50	Avg. Air Consumption.....	8 cfm



2-1/4"



Wheel not included

Nippon Pneumatic Model DAC-11

Rotary Cutter

Features front exhaust. Ideal for automotive repair, sheet metal and fiberglass industries. Features diamond tipped cutting blade. Great for panel sawing and trimming. Adjustable cutting depth allows for maximum versatility. Extra diamond blades available.

D32000K390 Diamond Cutter Blade

Blade Diameter.....	2-1/8"	Length.....	11-3/4"
Depth of Cut.....	3/8"	Weight.....	3.7 lbs.
Free Speed.....	13000 rpm	Air Inlet Thread.....	1/4"
Maximum HP.....	1.00	Avg. Air Consumption.....	16 cfm



2-3/4"



Wheel not included

Michigan Pneumatic Model MP-9314A-DD

Rotary Cutter

Features rear exhaust. Panel saw features left or right head cut. Ideal for sheet metal and fiberglass industries. Useful for reaching into narrow corners and holes.

F41638 1/16" Replacement Wheel

F41838 1/8" Replacement Wheel

Blade Diameter.....	4"	Length.....	13-1/4"
Depth of Cut.....	1-1/4"	Weight.....	2.9 lbs.
Free Speed.....	15000 rpm	Air Inlet Thread.....	1/4"
Maximum HP.....	1.00	Avg. Air Consumption.....	16 cfm



1-1/2"



Wheel not included

Michigan Pneumatic Model MP-9315CR-DD

Rotary Cutter

Features rear exhaust. Designed to reach into narrow corners and holes. Guard rotates to allow for left or right cuts.

F41638 1/16" Replacement Wheel

F41838 1/8" Replacement Wheel

Blade Diameter.....	4"	Length.....	15-7/8"
Depth of Cut.....	1-1/4"	Weight.....	3.1 lbs.
Free Speed.....	15000 rpm	Air Inlet Thread.....	1/4"
Maximum HP.....	1.00	Avg. Air Consumption.....	16 cfm



1-1/2"



Wheel not included

Michigan Pneumatic Model MP-9315U-DD

Rotary Cutter - Electric

Features rear exhaust. Same features as our air rotary cutter. Ideal for automotive repair & sheet metal shops.

F41638 1/16" Replacement Wheel

F41838 1/8" Replacement Wheel

Blade Diameter.....	4"	Length.....	18-1/2"
Depth of Cut.....	1-1/4"	Weight.....	4.4 lbs.
Free Speed.....	15000 rpm	Power.....	110V
Maximum HP.....	1.00		

See page 73 for grinder accessories.

Air Nipper/Trimmer



Powerful, lightweight trimmers designed for a variety of applications, including pressing, riveting, bending and plate cutting. Ideal for cutting copper wire and soft materials. Larger units are perfect for cutting plastics, stainless steel and piano wire. **Optional blades available.**

Model No.	Copper Wire Capacity	Steel Wire Capacity	Length	Weight	Diameter	Air Inlet
MP-AN16	1/16"	-	5-29/32"	7 oz.	1-3/8"	1/8" FPT
MP-MR3	1/32"	1/64"	4-13/32"	3.2 oz.	25/32"	1/4" MPT
MP-MR20	7/64"	5/64"	5-19/32"	14 oz.	1-3/4"	1/4" MPT
MP-MR30-CR8P	9/64"	1/8"	7"	1.50 lbs.	2-1/4"	1/4" MPT
MP-MP35A-CR8P	3/16"	5/32"	12"	2.63 lbs.	2-1/4"	1/4" MPT
MP-MR50	15/64"	3/16"	9-19/64"	3.33 lbs.	3"	1/4" MPT
MP-MP55A-P120	17/64"	15/64"	14-41/64"	6.40 lbs.	3"	1/4" MPT

Optional Blades for Air Nipper/Wire Trimmer



Used in the MP-MR20 Nipper

Part No.	Description
CR6	Clipper Blade
P6	Standard Blade

Used in the MP-MR30 Nipper

Part No.	Description
AR8P	Crimping Blade
CR8P	Clipper Blade
EP10P	End Cutting Blade
FD9P	Plastic Cutting Blade
P8P	Standard Blade
Z8P	Carbide Tip Blade

Used in the MP-MR50/MP-MP55A Nipper

Part No.	Description
CR120	Clipper Blade
P120	Standard Blade

Used in the MP-MR35A Nipper

Part No.	Description
AR8P	Crimping Blade
CR8P	Clipper Blade
EP10P	End Cutting Blade
FD9P	Plastic Cutting Blade
P8P	Standard Blade
Z8P	Carbide Tip Blade

Reciprocating Saws & Files



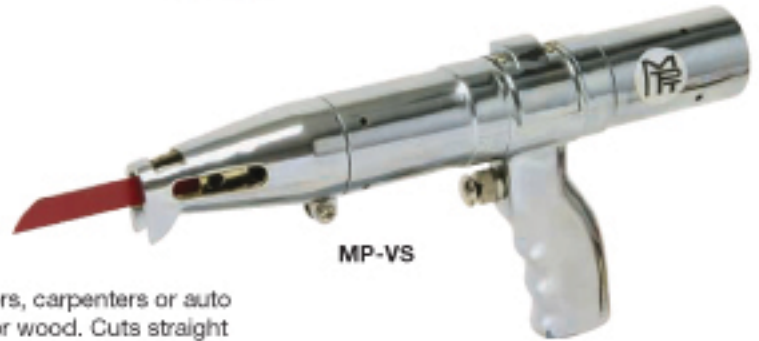
MP-129TW-ST



SSW-110



MP-4132K-DD

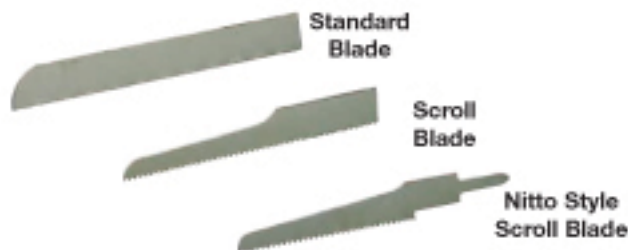


MP-VS

One hand operation makes difficult jobs simple. Ideal for plumbers, carpenters or auto repair technicians for sawing or filing iron, steel, copper, plastic or wood. Cuts straight and curved surfaces in confined places.

Model No.	Strokes Per Minute	Stroke	Blade Type	Length	Weight	Air Inlet	Avg. Air Consumption
MP-129TW-ST	10000	3/8"	Standard/Scroll	9-1/4"	1.38 lbs.	1/4"	5 cfm
MP-4132K-DD	9000	3/8"	Standard/Scroll	9-3/8"	1.25 lbs.		9 cfm
SSW-110	7000	3/8"	Nitto Style	8-1/2"	1.45 lbs.		9 cfm
MP-VS	2200	1-1/4"	Standard/Scroll	11-3/8"	3.80 lbs.		5 cfm

Hi-Speed Saw Blades



Minimum quantities of 10 each. Bench files also available.

Standard Blade		Scroll Blade		Nitto Style Scroll Blade	
Part No.	No. of Teeth	Part No.	No. of Teeth	Part No.	No. of Teeth
12110	10	12510	10	-	-
12114	14	12514	14	13014	14
12118	18	12518	18	13018	18
12124	24	12524	24	13024	24
12132	32	12532	32	13032	32



SH-100A



ASH-800

Small, lightweight "SuperHand" performs with the power and efficiency of much larger tools. Ideal for filing, descaling, grinding, chamfering and polishing. Great for curves. **Extra files and pad assembly available.**

- TA9A222-0 Rat Tail File (set of 5)
- TA9A223-0 Triangular Taper File (set of 5)
- TA9A224-0 Half Round File (set of 5)
- TA9A225-0 Flat Bastard File (set of 5)



Model No.	Speed	Stroke	Shank Diameter	Length	Weight	Avg. Air Consumption
MP-1000A-ST	3700 B/minute	23/64"	1/4"	6-7/8"	2.50 lbs.	8.5 cfm
SH-100A	3700 B/minute	23/64"	1/4"	6-7/8"	2.50 lbs.	8.5 cfm
ASH-800	6500 B/minute	5/16"	7/32"	7-1/2"	1.15 lbs.	8.1 cfm

Equipped with 4 different files for all types of work.

Reciprocating Saws & Accessories



Model MP-5-1212-0050 Hacksaw



Designed for service in refineries, chemical plants, utilities, pipelines and heavy industry. Ideal for cutting pipes, tanks and structural steel. Pipes up to 24" diameter can be cut in a single pass. Optional clamps for precise cuts available.

Strokes Per Minute.....	330	Rec'd Hose Size.....	1/2"
Length of Stroke.....	2-3/8"	Weight.....	15.4 lbs.
Capacity.....	24"	Air Inlet Thread.....	3/4"
Maximum HP.....	1.5	Avg. Air Consumption.....	51 cfm

MP-5-1212-0050 Accessories



512079910 Pipe Clamp



512078970 Profile Clamp



CCSG3 4-in-1 Clamp



512029960 Pipe Clamp

Part No.	Description
512019010	17-3/8" Extension Chain
512019030	39-3/8" Extension Chain
512079970	Saw Blade Guide (up to 13" capacity)
512078910	Saw Blade Guide (up to 21" capacity)
512079910	Pipe Clamp (up to 6" capacity)
512029960	Pipe Clamp (up to 12-3/4" capacity, up to 24" dia. with extension chain)
512078970	Profile Clamp (up to 21-5/8" x 11-3/8" capacity)
CCSG3	4-in-1 Clamp

Part No.	Description
10907	16" Saw Blade, 14 TPI
Z22-6-HSS	12" Saw Blade, 16 TPI (50 per box)
Z22-7-HSS	16" Saw Blade, 16 TPI (50 per box)
Z22-29-HSS	16" Saw Blade, 8 TPI (50 per box)
Z22-30-HSS	21" Saw Blade, 12 TPI (25 per box)
Z22-37-HSS	37" Saw Blade, 12 TPI (25 per box)
Z22-72-HSS	20" Saw Blade, 14 TPI (20 per box)

MP-5-1217-0020 Reciprocating Saw



The perfect tool for sawing up to 4" steel pipe or up to 6" plastic pipe. Ideal for assembly, demolition, pipe repair and pallets. Plunge-in sawing for plastic pipe up to 63" in diameter. Optional clamps available.

Strokes Per Minute.....	1800	Rec'd Hose Size.....	1/2"
Length of Stroke.....	1-1/8"	Weight.....	9 lbs.
Capacity.....	4"	Air Inlet Thread.....	1/2"
Maximum HP.....	1.3	Avg. Air Consumption.....	46 cfm

MP-5-1217-0020 Accessories



563100 Clamp-On Vise



251259 Pipe Clamp

Part No.	Description
252329	6" Blade, 8 TPI, 5 blades per pack
251620	8" Blade, 8 TPI, 5 blades per pack
251259	Pipe Clamp (1/2" - 6" capacity, up to 8" plastic)
259983	Clamp-On Vise (1/2" - 2" capacity)
563100	Clamp-On Vise (2-1/2" - 4" capacity)

Additional saw blades available.

Chain & Band Saws



Michigan Pneumatic Model MP-51005

Utility Chain Saw

Lightweight, general utility pneumatic chain saw cuts wood and plastic fast. Ideal for applications in chemical plants, utilities, mines and construction.

51005-7110 10" Guide Bar
51005-9910 10" Chain

Blade Length	10"	Length	20-1/4"
Free Speed	228 sfpm	Weight	4.4 lbs.
Maximum HP	1.20	Air Inlet Thread	1/4"
Rec'd Hose Size	3/8"	Avg. Air Consumption	30 cfm



Michigan Pneumatic Model MP-51007-25

Utility Chain Saw

Ideal for cutting wood and plastic in polyethylene plants, petro-chemical industries, utilities, underground mines and marine industries. **Model MP-51008-25 for underwater applications.**

51007-7140 25" Guide Bar 51007-9940 25" Chain

Blade Length	25"	Length	41"
Free Speed	1900 sfpm	Weight	20 lbs.
Maximum HP	4.00	Air Inlet Thread	3/4"
Rec'd Hose Size	3/4"	Avg. Air Consumption	92 cfm



Michigan Pneumatic Model MP-71773-14

Concrete Chain Saw

Designed to cut through reinforced concrete, stone, concrete pipe and brick. Features die-cast aluminum body for use in harsh environments and a built-in wall-walker for leverage. **Model MP-71773-10 with 10" blade length available.**

71773-2176 14" Guide Bar 70552 Speed Hook® Kit
71773-4723 14" Chain

Blade Length	14"	Length	35-1/4"
Free Speed	4900 sfpm	Weight	34 lbs.
Maximum HP	6.50	Air Inlet Thread	3/4"
Rec'd Hose Size	3/4"	Avg. Air Consumption	124 cfm



Michigan Pneumatic Model MP-5631-475

Portable Band Saw

Safe in hazardous areas. Fast, free-hand cutting of pipe and other profiles. Quickly cuts steel, angle iron, stainless steel and hard metals with tough M42 saw blades. **Electric Model MP-5641-475 available.**

925060030 10-14 Variable TPI Bandsaw Blade (each)
560039000 Clamp-On Vise

Max. Width of Cut	4-1/2"	Length	21-1/2"
Max. Depth of Cut	4-3/4"	Weight	14 lbs.
Free Speed	220 sfpm	Air Inlet Thread	1/4"
Maximum HP	0.75	Avg. Air Consumption	20 cfm



Michigan Pneumatic Model MP-5631-725

Portable Band Saw

Safe in hazardous areas. Fast, free-hand cutting of pipe and other profiles. Quickly cuts steel, angle iron, stainless steel and hard metals with tough M42 saw blades. **Electric Model MP-5671-725 available.**

925060230 10-14 Variable TPI Bandsaw Blade (each)
560319400 Clamp-On Vise

Max. Width of Cut	7"	Length	28-3/4"
Max. Depth of Cut	7"	Weight	28 lbs.
Free Speed	295 sfpm	Air Inlet Thread	1/4"
Maximum HP	1.30	Avg. Air Consumption	43 cfm

Metal Shears



Kett Model P-1040 Pneumatic Metal Shears

Features a variable speed motor for a smooth, well-balanced grip. Double cut shear easily cuts through 14 gauge mild steel and stainless to 18 gauge without the need to file or deburr. Shears aluminum, tin, steel and plastic with ease. Import Model MP-204-S 18 gauge shear available.

40-20	Shear Head	40-21	Center Blade
60-22L	Side Knife Left	60-22R	Side Knife Right

Capacity.....	14 Gauge Mild Steel	Length.....	10"
Cutting Speed.....	180*/min.	Weight.....	3 lbs.
Maximum Speed.....	2500 rpm	Air Inlet Thread.....	1/4"



Kett Model P-500 Pneumatic Metal Shears

Features double-cutting action to cleanly cut 18 gauge and lighter sheet metal without distortion. A 7/32" waste curl leaves both sides of the cut straight with no need to file or deburr. Variable speed trigger provides speed control. Ideal for the tinner, roofer and auto body shop.

60-20	Shear Head	60-21	Center Blade
60-22L	Side Knife Left	60-22R	Side Knife Right

Capacity.....	18 Gauge Mild Steel	Length.....	11"
Cutting Speed.....	180*/min.	Weight.....	3 lbs.
Maximum Speed.....	2200 rpm	Air Inlet Thread.....	1/4"



Kett Model P-540 Pneumatic Metal Shears

For heavier duty applications than the P-500, cutting up to 14 gauge cold-rolled steel. Variable speed trigger lets operator make smooth, easy starting cuts even in most grades of stainless steel up to 16 gauge. Great time saver in any construction company, sheet metal or sign shop.

40-20	Shear Head	40-21	Center Blade
60-22L	Side Knife Left	60-22R	Side Knife Right

Capacity.....	14 Gauge Mild Steel	Length.....	11"
Cutting Speed.....	150*/min.	Weight.....	4 lbs.
Maximum Speed.....	2200 rpm	Air Inlet Thread.....	1/4"



Kett Model KD-200 Electric Metal Shears - 120 Volt

Double-cut shears feed quickly and quietly without warping or bending. Easily follows a scribed line. Edges are not hardened or burred to get maximum use of a sheet. Swiping action of blades seals the edge of coated metals. Cut sheet metal in straight or contoured lines and plastic or formica up to 3/32" thick.

60-20	Shear Head	60-21	Center Blade
60-22L	Side Knife Left	60-22R	Side Knife Right

Capacity.....	18 Gauge Mild Steel	Length.....	13-1/2"
Cutting Speed.....	180*/min.	Weight.....	4 lbs.
Maximum Speed.....	2500 rpm	Motor.....	5.0 Amps



Kett Model KD-440 Electric Metal Shears - 120 Volt

Lightweight pistol-grip shear cuts 14 gauge mild steel and stainless up to 16 gauge. Double-insulated, variable-speed motor cuts at over 150 inches per minute, leaving a clean, flat sheet, ready to fabricate. Distortions are absorbed in an easily disposed waste curl, leaving the sheet cool and free of burn, chips or burrs.

40-20	Shear Head	40-21	Center Blade
60-22L	Side Knife Left	60-22R	Side Knife Right

Capacity.....	14 Gauge Mild Steel	Length.....	13-1/2"
Cutting Speed.....	150*/min.	Weight.....	5 lbs.
Maximum Speed.....	2500 rpm	Motor.....	5 Amps



Scissor Shears



Kett Model P-1080 Pneumatic Scissor Shears

Features a new, straight-handled body design for improved control and maneuverability. Easily cuts through pliable materials such as carpet, foam rubber, linoleum and vinyl. Equipped with variable speed motor for fast, accurate work. Truly compact and portable.

80-20	Scissor Head	80-21	Scissor Blade
80-22	Stationary Blade		

Capacity.....	Pliable Materials	Length.....	12"
Maximum Speed	2500 rpm	Weight.....	3 lbs.
Avg. Air Consumption:	4 cfm	Air Inlet Thread	1/4"



Kett Model P-580 Pneumatic Scissor Shears

Cuts a wide range of pliable sheet materials, including carpet and carpet underlay, foam rubber, linoleum, vinyl and woven wood fabric. Large rabbit ear blades funnel thick, soft materials into the scissor jaws without fouling or gouging. Handles heavy foil, light insulated wire, hardware cloth and mesh screening.

80-20	Scissor Head	80-21	Scissor Blade
80-22	Stationary Blade		

Capacity.....	Pliable Materials	Length.....	12-1/2"
Maximum Speed	2200 rpm	Weight.....	3 lbs.
Avg. Air Consumption:	4 cfm	Air Inlet Thread	1/4"



Kett Model P-541 Pneumatic Scissor Shears

Quickly cuts through plastics, wire mesh and rubber with a clean scissors action. When cutting thin coated metals, the swiping cut seals edges to prevent rust and corrosion. Variable speed motor lets operator set the speed of the shears to the work.

41-20	Scissor Head	41-21	Scissor Blade
41-22	Stationary Blade		

Capacity.....	24 Gauge Mild Steel	Length.....	12-1/2"
	18 Gauge Wire Mesh	Weight.....	5 lbs.
Maximum Speed	2200 rpm	Air Inlet Thread	1/4"



Kett Model KD-280 Electric Scissor Shears - 120 Volt

Large rabbit ear blades funnel thick, soft materials into the scissor jaws for a clean, flowing cut. Ideal for cutting pliable materials such as vinyl, woven wood, chipboard, foam rubber and linoleum. Also cuts heavy foil, light insulated wire, hardware cloth and light mesh screening. Features stationary bottom blade and single speed motor.

80-20	Scissor Head	80-21	Scissor Blade
80-22	Stationary Blade		

Capacity.....	Pliable Materials	Length.....	15-1/2"
	Light Wire	Weight.....	4 lbs.
Maximum Speed	2500 rpm	Motor.....	5 Amps



Kett Model KD-441 Electric Scissor Shears - 120 Volt

Quickly cuts through plastics, wire mesh and rubber with a clean scissors action. When cutting thin coated metals, the swiping cut seals edges to prevent rust and corrosion. Variable speed motor lets operator set the speed of the shears to the work.

41-20	Scissor Head	41-21	Scissor Blade
41-22	Stationary Blade		

Capacity.....	24 Gauge Mild Steel	Length.....	15-1/2"
	18 Gauge Wire Mesh	Weight.....	5 lbs.
Maximum Speed	2500 rpm	Motor.....	5 Amps

Portable Nibblers & Bevelers



Air operated portable nibblers are used where safety is a prime factor, such as oil refineries, chemical plants and other areas where electricity cannot be used due to hazardous conditions. These precisely engineered nibblers cut almost any metal faster, with increased operator

efficiency. Designed to produce a clean cut without distortion, leaving an edge requiring only minimal deburring or grinding. These nibblers offer the same metal cutting advantages as electric models. **One year warranty.**



521536 Cutter
521539 Cutter Die

Michigan Pneumatic Model MP-5215-ST

Nibbler - Air

Ideal for cutting up to 18 gauge sheet metal in any configuration. Provides a clean, smooth, accurate cut without distortion. Equipped with heavy-duty die cutter and holder. Durable and lightweight for easy handling.

Capacity.....	3/64" Steel	Weight.....	1.875 lbs.
	5/64" Aluminum	Rec'd Hose Size.....	3/8"
Free Speed.....	4300 rpm	Air Inlet.....	1/4"
Length.....	7"	Avg. Air Consumption.....	4 cfm



21340 Punch
21341 Die

Michigan Pneumatic Model MP-711F-ST

Nibbler - Air

Cuts sheet metal in any configuration and holes as small as 1" in diameter without distortion. Great for use with templates. Equipped with adjustable die guide for easy cutting.

Capacity.....	18 Gauge Steel	Weight.....	2 lbs.
Width of Cut.....	7/32"	Rec'd Hose Size.....	3/8"
Strokes Per Minute.....	2600	Air Inlet.....	1/4"
Length.....	7"	Avg. Air Consumption.....	4 cfm



TV7A019-0 Straight Tip (2 pc)
TV7A020-0 1/16" radius (2 pc)
TV7A021-0 1/8" radius (2 pc)
TV7A022-0 5/32" radius (2 pc)

Nitto Kohki Model AMB-0307

Mini Beveler - Air

Small beveler for big jobs, such as speedy pipe beveling. Ideal for stainless steel up to 3C. Compact, lightweight tool is ideal for on-site beveling jobs. Pipe outer diameter chamfering kit supplied with tool.

Capacity.....	9/32" C Mild Steel	Weight.....	6.25 lbs.
	1/8" C Stainless	Rec'd Hose Size.....	3/8"
Free Speed.....	13000 rpm	Air Inlet.....	1/4"
Cutting Diameter.....	1-1/8"	Avg. Air Consumption.....	31.8 cfm



1439361 Punch
1439360 Carrier with Integrated Die

Trumpf Model PN-130-0

Profile Nibbler - Electric

- Cuts welded seams and uneven material.
- Extremely maneuverable.
- May be guided in any direction.
- Suitable for interior cutouts.

Maximum Material Thickness.....	0.061"
Cutting Speed.....	10 ft./min.
Smallest Radius.....	0.984"
Motor Rating.....	350 W
Weight.....	3.1 lbs.



0088503 Cutter
0089335 Cutter (HSS)
0005014 Cutter (Aluminum)
0110399 Cutter (Heavy Duty)

Trumpf Model TKF-1500-1-PLUS

Beveler - Air

- Unsurpassed beveling speed.
- 2-speed motor for stainless steel
- Prepares plate and pipe for welding.
- Easily adjustable.

Maximum Material Thickness.....	1-1/2"
Cutting Speed.....	4-6 ft./min.
Bevel Angles.....	20°-45°
Smallest Inner Radius.....	2-11/64"
Weight.....	43 lbs.
Rec'd Hose Size.....	5/8"
Air Inlet.....	1/2" MPT
Avg. Air Consumption.....	100 cfm

Larger capacity nibblers also available.

Portable Air Shears



TRUMPF



Trumpf Model C160-5-PLUS Double Cut Shears

Mild Steel.....(0.063") 16 ga.
Stainless.....(0.047") 18 ga.
Aluminum.....(0.078")
Cutting Speed.....4-6 ft./min.
Minimum Radius.....3.5"
Weight.....3.1 lbs.
Rec'd Hose Size.....3/8"
Air Inlet.....1/4" MPT
Avg. Air Consumption.....13 cfm

Replacement Parts:
Cutter (Straight Moving)
up to 0.040" 0143432
0.040"-0.063" 0143463
Cutter (Curves) to 0.40" 0143434
Cutter (HSS & Spiral
Duct) up to .040" 0934055
Cutter Set (Fixed) 0913520

ELECTRIC MODEL C160-2-PLUS available.

TRUMPF



Trumpf Model S160-9 Light-Duty Shears

Mild Steel.....(0.063") 16 ga.
Stainless.....(0.040") 19 ga.
Aluminum.....(0.075") 14 ga.
Cutting Speed.....24-36 ft./min.
Minimum Radius.....0.590"
Weight.....3.5 lbs.
Rec'd Hose Size.....3/8"
Air Inlet.....1/4" MPT
Avg. Air Consumption.....13 cfm

Replacement Parts:
Cutter (Upper or Lower) 0044502

ELECTRIC MODEL S160-6 available.

TRUMPF



Trumpf Model S250-7 Medium-Duty Shears

Mild Steel.....(0.105") 12 ga.
Stainless.....(0.063") 16 ga.
Aluminum.....(0.120") 11 ga.
Cutting Speed.....13-23 ft./min.
Minimum Radius.....0.787"
Weight.....5 lbs.
Rec'd Hose Size.....3/8"
Air Inlet.....1/4" MPT
Avg. Air Consumption.....13 cfm

Replacement Parts:
Cutter (Upper or Lower) 0003946

ELECTRIC MODEL S250-6 available.

TRUMPF



Trumpf Model S350-3 Heavy-Duty Shears

Mild Steel.....(0.138") 10 ga.
Stainless.....(0.075") 14 ga.
Aluminum.....(0.157") 9 ga.
Cutting Speed.....13-20 ft./min.
Minimum Radius.....1"
Weight.....14 lbs.
Rec'd Hose Size.....1/2"
Air Inlet.....1/2" MPT
Avg. Air Consumption.....54 cfm

Replacement Parts:
Cutter (mild steel), set
of 2 with screws 0140451
Cutter (stainless), set
of 2 with screws 0140452

ELECTRIC MODEL S350-4 available.

Portable Electric Nibblers



120 volt portable electric nibblers are ideal for burr-free metal cutting of straight or curved lines and notching with no distortion of the metal sheet or plate. Tools are perfectly balanced for cutting and operator efficiency.

Weighing from 4 to 32 pounds, five different models offer capacities from 14 gauge to 3/8" mild steel. Also available in 220 volt. **One year factory warranty.**

TRUMPF



Trumpf Model N200-4 Light-Duty Cutting

- Unlimited maneuverability.
- Can be used on corrugated.

Mild Steel.....	(0.079")	14 ga.
Stainless.....	(0.040")	19 ga.
Aluminum.....	(0.100")	12 ga.
Cutting Speed.....	4 ft./min.	
Minimum Radius.....	0.160"	
Weight.....	4.6 lbs.	

Replacement Parts:	
Punch	0944506
Die (w/ pin & cover)	0980335

TRUMPF



Trumpf Model N350-4 Medium-Duty Cutting

- Compact, easy handling.
- Tool-free die and punch changing.

Mild Steel.....	(0.135")	10 ga.
Stainless.....	(0.090")	15 ga.
Aluminum.....	(0.135")	10 ga.
Cutting Speed.....	4 ft./min.	
Minimum Radius.....	0.280"	
Weight.....	7.5 lbs.	

Replacement Parts:	
Punch	0093538
Punch (HSS)	0103545
Die	0093536
Die (HSS)	0103546

TRUMPF



Trumpf Model N500-8 Heavy-Duty Cutting

- Very fast cutting speed.
- Tool-free punch changing.

Mild Steel.....	(0.197")	6 ga.
Stainless.....	(0.135")	10 ga.
Aluminum.....	0.276"	
Cutting Speed.....	4.5 ft./min.	
Minimum Radius.....	3.20"	
Weight.....	8.5 lbs.	

Replacement Parts:	
5/P5 Punch	1451224
Die 5 (0.120" to 0.197")	0975464
Die P5 (90° bends & up to 0.276" alum.)	0975462
2/3 Punch	1453187
Die 3 (0.075" to 0.126")	0975466
Die 2 (0.048" to 0.078")	0975468
Punch Guide	0975460

TRUMPF



Trumpf Model N700-2 Extra Heavy-Duty Cutting

- Light weight and maneuverable for any application.
- Very fast cutting speed.

Mild Steel.....	0.276"	
Stainless.....	(0.197")	6 ga.
Aluminum.....	0.394"	
Cutting Speed.....	5 ft./min.	
Minimum Radius.....	5.50"	
Weight.....	18.3 lbs.	

Replacement Parts:	
Punch	0104589
Punch (HSS)	0104590
Die (0.118" to 0.197")	0098723
Die (0.197" to 0.276")	0098722
Die (90° bends & 0.394" aluminum)	0098721
Wear Plate	0119173
Punch Guide	1274571

TRUMPF



Trumpf Model N1000-0 Super Heavy-Duty Cutting

- Easily resharpened punches and dies.
- 2-speed motor for optimum performance in any application.

Mild Steel.....	0.375"	
Stainless.....	0.276"	
Aluminum.....	0.500"	
Cutting Speed.....	Gear 1:	3.25 ft./min.
	Gear 2:	5.25 ft./min.
Minimum Radius.....	16"	
Weight.....	32 lbs.	

Replacement Parts:	
Punch	0112900
Punch (HSS)	0120344
Die (0.197" to 0.276")	0112899
Die (0.276" to 0.394")	0112898
Die (90° bends & 0.472" aluminum)	0112897
Wear Plate	0112922
Punch Guide	0112901

Portable Air Nibblers



Air operated portable nibblers are used where safety is a prime factor, such as oil refineries, chemical plants and other areas where electricity cannot be used because of hazardous atmospheres. These nibblers offer the

same metal-cutting advantages as the electric models. Weighing from 3.5 to 32 pounds, five different models offer capacities from 14 gauge to 3/8" mild steel. **One year factory warranty.**

TRUMPF



Trumf Model N200-7 Light-Duty Cutting

- Unlimited maneuverability.
- Can be used on corrugated.

Mild Steel.....	(0.079")	14 ga.
Stainless.....	(0.040")	19 ga.
Aluminum.....	(0.100")	12 ga.
Cutting Speed.....	4.5 ft./min.	
Minimum Radius.....	0.160"	
Weight.....	3.5 lbs.	
Rec'd Hose Size.....	3/8"	
Air Inlet.....	1/4" MPT	
Avg. Air Consumption.....	13 cfm	

Replacement Parts:	
Punch	0944506
Die (w/ pin & cover)	0980335

TRUMPF



Trumf Model N350-3 Medium-Duty Cutting

- Extremely maneuverable.
- Lubricator in handle.

Mild Steel.....	(0.135")	10 ga.
Stainless.....	(0.090")	15 ga.
Aluminum.....	(0.135")	10 ga.
Cutting Speed.....	4 ft./min.	
Minimum Radius.....	0.280"	
Weight.....	10.5 lbs.	
Rec'd Hose Size.....	5/8"	
Air Inlet.....	1/2" MPT	
Avg. Air Consumption.....	54 cfm	

Replacement Parts:	
Punch	0093538
Punch (HSS)	0103545
Die	0093536
Die (HSS)	0103546

TRUMPF



Trumf Model N500-7 Heavy-Duty Cutting

- Very fast cutting speed.
- Tool-free punch changing.

Mild Steel.....	(0.197")	6 ga.
Stainless.....	(0.135")	10 ga.
Aluminum.....	0.276"	
Cutting Speed.....	4.5 ft./min.	
Minimum Radius.....	0.280"	
Weight.....	9 lbs.	
Rec'd Hose Size.....	5/8"	
Air Inlet.....	1/2" MPT	
Avg. Air Consumption.....	54 cfm	

Replacement Parts:	
5/P5 Punch	1451224
Die 5 (0.120" to 0.197")	0975464
Die P5 (90° bends & up to 0.276" aluminum)	0975462
2/3 Punch	1453187
Die 3 (0.075" to 0.126")	0975466
Die 2 (0.048" to 0.078")	0975468
Punch Guide	0975460

TRUMPF



Trumf Model N700-1 Extra Heavy-Duty Cutting

- Very fast cutting speed.
- Light weight and maneuverable for any application.

Mild Steel.....	0.276"	
Stainless.....	(0.197")	6 ga.
Aluminum.....	0.394"	
Cutting Speed.....	5 ft./min.	
Minimum Radius.....	5.50"	
Weight.....	27 lbs.	
Rec'd Hose Size.....	5/8"	
Air Inlet.....	1/2" MPT	
Avg. Air Consumption.....	100 cfm	

Replacement Parts:	
Punch	0104589
Punch (HSS)	0104590
Die (0.118" to 0.197")	0098723
Die (0.197" to 0.276")	0098722
Die (90° bends & 0.394" aluminum)	0098721
Wear Plate	0119173
Punch Guide	1274571

TRUMPF



Trumf Model N1000-1 Super Heavy-Duty Cutting

- Easily resharpened punches and dies.
- Adjustable stripper for variable material thickness.

Mild Steel.....	0.375"	
Stainless.....	0.276"	
Aluminum.....	0.500"	
Cutting Speed.....	Gear 1: 3.25 ft./min. Gear 2: 5.25 ft./min.	
Minimum Radius.....	16"	
Weight.....	32 lbs.	
Rec'd Hose Size.....	5/8"	
Air Inlet.....	1/2" MPT	
Avg. Air Consumption.....	100 cfm	

Replacement Parts:	
Punch	0112900
Punch (HSS)	0120344
Die (0.197" to 0.276")	0112899
Die (0.276" to 0.394")	0112898
Die (90° bends & 0.472" aluminum)	0112897
Wear Plate	0112922
Punch Guide	0112901

Air Line Accessories



Michigan Pneumatic **Mini-Lube** **Portable Lubricator**

Model 100250 - 1/4" Air Flow 5-15 cfm



Weight..... 2.5 oz.
Length..... 2-1/2"
Maximum O.D..... 1-3/16"
Pipe Size..... 1/4"
Oil Capacity..... 5 cc

Michigan Pneumatic **Midget-Lube** **Portable Lubricator**

Model 300250 - 1/4" Air Flow 8-20 cfm
Model 300375 - 3/8" Air Flow 10-30 cfm



Weight..... 3.5 oz.
Length..... 2-1/2"
Maximum O.D..... 1-1/4"
Pipe Sizes..... 1/4" & 3/8"
Oil Capacity..... 9 cc

Michigan Pneumatic **Master-Lube** **Portable Lubricator**

Model 400250 - 1/4" Air Flow 8-20 cfm
Model 400375 - 3/8" Air Flow 10-40 cfm
Model 400500 - 1/2" Air Flow 25-65 cfm



Weight..... 5 oz.
Length..... 3-1/4"
Maximum O.D..... 1-5/8"
Pipe Sizes..... 1/4", 3/8" & 1/2"
Oil Capacity..... 22 cc

Air Tool Inlet Regulators

Ideal for restricting the air flow to tools not equipped with built-in regulators. Model 894 CP style regulator features brass construction and a spring loaded ratchet, which prevents unintentional setting changes.

- Easy to install, easy to use.
- Provides precise regulation of air.

Model 894 1/4" NPT
Model 5711 1/4" NPT
Model 038-0.375 3/8" NPT
Model 038-0.500 1/2" NPT



1/4" Regulator

with Pressure Gauge Model 5712-F

Ideal for restricting air flow to tools with 1/4" pipe thread. Features a built-in pressure gauge for perfect control of power. Handy, sturdy design and easy to attach.



Regulator Pressure Gauge

- Quality air gauge designed for use with any air tool.
- Metal case with glass lens.



Model PG1 1/8" MPT, back mount, 0-160 psi, 1-1/2" dial
Model PG2 1/4" MPT, back mount, 0-200 psi, 2" dial
Model PG3 1/4" MPT, bottom mount, 0-160 psi, 2" dial

Other sizes and pressure ranges available.

Air Line Pressure Gauge

- For constant reading of line pressure.
- 1/4" male bottom connection.
- Large indicator dial.
- Chrome plated case.



Model No.	Range	Dial Size
GB14100	0-100 psi	2"
GB14160	0-160 psi	
GB14200	0-200 psi	
GB14300	0-300 psi	
GB16160	0-160 psi	2-1/2"
GB16200	0-200 psi	
GB16300	0-300 psi	
GB17600	0-600 psi	3-1/2"

Other sizes and pressure ranges available.

Safety Excess Flow Check Valve

- OSHA approved.
- Tamper proof construction.
- Allows full, unrestricted airflow.
- Automatically shuts off air flow in case of sudden air line break protecting personnel and property.
- Automatic reset after line repair.



Model No.	Inlet Size	Outlet Size
SV802	1/4" FPT	1/4" FPT
SV803	3/8" FPT	3/8" FPT
SV804	1/2" FPT	1/2" FPT
SV200F-85	2-1/4" FPT	2-1/4" FPT
SV805	3/4" MPT	3/4" FPT
SV808	1" MPT	1" FPT

Full Flow Brass Ball Valve

For control of air, water and oil in hoses or pipelines up to 400 psi. Features a brass valve body, brass stems, stainless steel ball and die cast aluminum handle with a vinyl sleeve. Equipped with female threaded ends and full port design.



Model No.	Pipe Size
21104	1/4"
21106	3/8"
21108	1/2"
21112	3/4"
21116	1"
21120	1-1/4"

Air Movers/Ventilators



Michigan Pneumatic

Venturi Style Air Movers

Michigan Pneumatic venturi style air movers are used in many industrial and construction sites where there is a need to disperse hazardous fumes, move air into a confined space, cool individuals in elevated temperature conditions, or ventilate equipment and machinery with a blast of directed air. Common applications include shipyards, refineries, chemical plants, paper mills and manhole ventilation.

- No moving parts
- Minimal required maintenance
- Can be used as a blower or for exhaust
- Safe in hazardous areas
- Performance tested
- Lightweight and portable

**MADE
U.S.A.
IN THE**



MP-3AMS

MP-6AM

MP-10AM

Michigan Pneumatic Model JF20

Jet Fan

Features a heavy-duty, hi-tech, four blade design that is versatile for a wide range of applications. Can be used either as a blower or an exhauster, and is well suited for confined areas for the removal of hazardous fumes or contaminated air from applications such as welding or sand blasting.

- Six turbulence-eliminating guide vanes
- Operates at lower RPMs while moving more air
- Heat treated to T6 aircraft aluminum specifications
- Stainless steel fan guard meets OSHA standards
- Use for general ventilation

**MADE
U.S.A.
IN THE**



JF20

Model No.	Overall Length	Base Diameter	Top of Horn Diameter	Bolt Circle Diameter	Base Slot Diameter	Weight	Air Inlet Thread
MP-3AMS	16.75"	7.31"	6.00"	6.56"	0.4"	5.5 lbs.	1/2"
MP-3AM	30.50"	7.31"	7.00"	6.56"	0.4"	8.5 lbs.	1/2"
MP-6AM	44.25"	11.25"	12.50"	10.50"	0.4"	22.3 lbs.	1"
MP-8AM	46.06"	14.37"	14.25"	13.62"	0.5"	36.0 lbs.	1"
MP-10AM	48.00"	17.00"	15.75"	15.50"	1.0"	42.1 lbs.	1"
JF20	12.50"	27.00"	-	* 20.00"	1.0"	95.0 lbs.	3/4"

* Matches American Petroleum Institute tank opening

Inlet Pressure - Total Air Flow

Model No.	40 psig	60 psig	80 psig	100 psig
MP-3AMS	815 cfm	981 cfm	1182 cfm	
MP-3AM	1017 cfm	1231 cfm	1462 cfm	
MP-6AM	2385 cfm	2885 cfm	3347 cfm	-
MP-8AM	3152 cfm	4152 cfm	4929 cfm	
MP-10AM	4898 cfm	6182 cfm	7304 cfm	
JF20	5920 cfm	7600 cfm	9100 cfm	10420 cfm

Inlet Pressure - Air Consumption

Model No.	40 psig	60 psig	80 psig	100 psig
MP-3AMS	36 scfm	50 scfm	62 scfm	
MP-3AM	35 scfm	45 scfm	62 scfm	
MP-6AM	73 scfm	98 scfm	124 scfm	-
MP-8AM	114 scfm	152 scfm	193 scfm	
MP-10AM	154 scfm	209 scfm	274 scfm	
JF20	60 scfm	114 scfm	186 scfm	292 scfm

Pneumatic air movers have been tested at an independent laboratory. The free flow ratings listed above are based on tests to AMCA Standard 210. Under identical testing situations, pneumatic air movers equalled or exceeded the air flow of competitively manufactured air movers.

Tool Balancers



Michigan Pneumatic

Tool Balancers

Applied ergonomics makes load weightless. Features reinforced hanging bracket with safety hook for ceiling mounting and extra holes for safety chain attachments.



Model No.	Tension Range	Cable Travel	Min. Hook to Hook Dist.	Cable Material	Weight
MP-2BAL	0-2 lbs.	6 ft.	11-1/2"	Uncoated Steel	1.25 lbs.
MP-4BAL	2-4 lbs.				
MP-7BAL	4-7 lbs.				

Michigan Pneumatic Model BM-SK3

Torque Reaction Arm

Bench mounted telescoping reaction arm eliminates sidekick torque up to 200 in.-lbs. Bolts directly to workspace. Other styles available. All accessories except the screwdriver are included as shown.



BC-1062

Optional Bench Clamp

Range of Motion.....	360° In Most Planes
Working Radius.....	16" to 32"
Tool Support Range.....	Up to 5 lbs.

Michigan Pneumatic

Hubbell Balancers

Applied ergonomics makes load weightless. Features reinforced hanging bracket with safety hook for ceiling mounting and extra holes for safety chain attachments. **Locking models available.**



Model No.	Tension Range	Cable Travel	Min. Hook to Hook Dist.	Cable Material	Weight
MP-BD01	0.5-1.5 lbs.	5 ft.	9-1/4"	Coated Steel	1.25 lbs.
MP-BD03	1.5-3 lbs.				1.25 lbs.
MP-BD05	3-5 lbs.				1.50 lbs.
MP-BG07	5-10 lbs.	8 ft.	13-7/8"	Coated Steel	6 lbs.
MP-BG10	8-12 lbs.				7 lbs.
MP-BG15	10-15 lbs.				8 lbs.
MP-BG20	16-23 lbs.				8 lbs.



BD Series



BG Series

Michigan Pneumatic

Heavy-Duty Tool Balancers

Rugged, compact, precision engineered tool balancers designed to improve productivity while reducing maintenance costs of small tools and operator fatigue. Smooth tension through the full cable length, plus an adjustment knob for tension control is your assurance of the safest, most reliable tool balancer. Keeps tools always at the ready with no lifting and no wasted motion.

- Heavy-duty all steel construction.
- Simple external tension adjustment.
- Adjustable cable stop for convenient operation.
- Ready for immediate installation with tool clip.
- Automatic safety lock.
- Self-contained mainspring.

Model No.	Tension Range	Cable Travel	Min. Hook to Hook Dist.	Cable Material	Weight
MP-BL02	1-3.5 lbs.	8 ft.	10-1/4"	Nylon	2.75 lbs.
MP-BL05	2-4.5 lbs.		10-1/4"		2.75 lbs.
MP-BL08	4.5-8 lbs.		10-1/4"		3 lbs.
MP-BL10	6.5-13.5 lbs.		12-5/8"		3 lbs.
MP-BL15	11-19 lbs.		12-5/8"		3.5 lbs.
MP-BL25	18-25 lbs.		12-5/8"		3.5 lbs.



BL Series





Tool Balancers & Hose Reels

Michigan Pneumatic

Low Range Balancers

Lightweight Steel Construction

- Balance Range 1.1 - 3.3 lbs.
- 3/32" diameter steel cable.

Standard reel type spring balancer for light loads.



Model No.	Tension Range	Cable Travel	Min. Hook to Hook Dist.	Weight
MP-SW-1	1.1-3.3 lbs.	3.9 ft.	9-1/4"	1.1 lbs.

Michigan Pneumatic

Heavy-Duty High Capacity Balancers

Cast Aluminum Construction

- Balance Range 33 - 154 lbs.
- 7/32" diameter steel cable.
- 360° swivel hook.

Designed for automobile assembly, meatpacking and steel manufacturing plants. The tapered drum minimizes tension build-up as the cable is extended.



Model No.	Tension Range	Cable Travel	Min. Hook to Hook	Weight
MP-SW-22	33.07-48.5 lbs.	4.9 ft.	16-5/8"	15.9 lbs.
MP-SW-30	48.4-66 lbs.			16.7 lbs.
MP-SW-40	66-88 lbs.			21.5 lbs.
MP-SW-50	88-110 lbs.			22.8 lbs.
MP-SW-60	110-132 lbs.			25.5 lbs.
MP-SW-70	132-154 lbs.		25.9 lbs.	

Michigan Pneumatic

Medium-Duty Balancers

Cast Aluminum Construction

- Balance Range 2.2 - 14.3 lbs.
- 1/8" diameter steel cable.
- 360° swivel hook.

Tapered drum spring balancer for production use. The tapered drum minimizes tension build-up as the cable is extended. Ideal for small assembly operations.



Model No.	Tension Range	Cable Travel	Min. Hook to Hook Dist.	Weight
MP-SW-3	2.2-6.8 lbs.	4.2 ft.	11-3/8"	3.0 lbs.
MP-SW-5	5.5-11 lbs.			3.3 lbs.
MP-SW-6.5	6.6-14.3 lbs.			3.5 lbs.

Aero-Motive Model 15F

Heavy-Duty Steel Construction

- Easy tension adjustment
- Durable 3/32" diameter stranded steel aircraft cable
- Long-lasting mainspring

Industrial model designed for repetitive assembly line work, steel manufacturing plants and machine shops.



Model No.	Tension Range	Cable Travel	Min. Hook to Hook Dist.	Weight
15F	8-15 lbs.	8 ft.	15-1/4"	8.8 lbs.

Michigan Pneumatic

Heavy-Duty Balancers

Cast Aluminum Construction

- Balance Range 9.9 - 33 lbs.
- 3/16" diameter steel cable.
- 360° swivel hook.

Ideal for jobs up to 33 lbs. where reel style balancers fail. The tapered drum minimizes tension build-up as the cable is extended.



Model No.	Tension Range	Cable Travel	Min. Hook to Hook Dist.	Weight
MP-SW-9	9.9-19.8 lbs.	4.2 ft.	13-1/4"	7.4 lbs.
MP-SW-15	19.8-33 lbs.			8.3 lbs.

Michigan Pneumatic

Auto Rewind Hose Reel

Lightweight, impact resistant polypropylene construction, UV stabilized for outside applications. Features a positive locking mechanism which enables hose to lock at any length. Can be installed at any position on a wall, ceiling or vehicle. Includes 50 ft. of 3/8" I.D. superflex outlet hose and 3 ft. of 3/8" I.D. inlet hose, heavy-duty mounting bracket and carrying handle.



Model RC2000-10
50 ft.
3/8" Hose

Filters, Regulators & Lubricators

Heavy-Duty Design for Total Air Line Protection



Michigan Pneumatic

Miniature Assemblies - with Gauge

MPT miniature assemblies include a filter, regulator, lubricator and gauge. Ideal where space is at a premium and a must for maximum protection of air operated equipment. **Filters feature a 5 micron sintered plastic element.**

- F50-1 1/8" Filter
- F50-2 1/4" Filter
- R55-1 1/8" Regulator
- R55-1G 1/8" Regulator & Gauge
- R55-2 1/4" Regulator
- R55-2G 1/4" Regulator & Gauge
- L50-1 1/8" Lubricator
- L50-2 1/4" Lubricator



Model FRL-55-2

Complete Assembly	Pipe Size	Capacity	Pressure
FRL-55-1	1/8"	1-1/2 oz.	0-100 psi
FRL-55-2	1/4"		

Michigan Pneumatic

Complete Assemblies - with Gauge

MPT trio assemblies include a filter, regulator, lubricator and gauge. An efficient, compact and permanent control assembly specially designed to provide maximum protection for air operated equipment, allowing tools to produce at peak operating efficiency. ***High Capacity.**



Model FRL-108W-4

Model No.	Pipe Size
FRL-108W-2	1/4"
FRL-108W-3	3/8"
FRL-108W-4	1/2"
FRL-180-6"	3/4"
FRL-180-8"	1"

Michigan Pneumatic

Regulators

MPT regulators reduce high primary air pressure to a secondary air pressure of 0-200 psi. This simple, accurate pressure reduction device provides stable air pressure within a recommended range for maximum operating efficiency. Ideal for controlling the speed and power of air equipment. **To order with gauge, please specify "G" after the part number. *High Capacity.**



Model R100-4G

Model No.	Pipe Size
R100-2	1/4"
R100-3	3/8"
R100-4	1/2"
R100-6	3/4"
R180M-8"	1"

Michigan Pneumatic

Lubricators

MPT lubricators automatically introduce an oil mist into the compressed air stream. Oil lubricates all precision working parts of air operated equipment, eliminating wear and allowing tools to produce at peak operating efficiency with a minimum of unscheduled downtime. Works with pipe scale, water and sludge in the bowl. **L28W features external oil adjustment. *High Capacity.**



Model L100-8

Model No.	Pipe Size	Capacity
L28W-2	1/4"	1/2 pint
L28W-3	3/8"	1/2 pint
L28W-4	1/2"	1/2 pint
L100-6"	3/4"	1 pint
L100-8"	1"	1 pint

Michigan Pneumatic

Filters

MPT filters eliminate the dangers of corrosive damage to compressed air equipment by effectively removing pipeline impurities such as scale, dirt, rust and moisture from the air stream. Designed to prevent abrasive damage. Water is drained off through a petcock. Maximum working pressure 150 psi. **Features a 5 micron sintered plastic element. *High Capacity.**



Model F100-4

Model No.	Pipe Size	Capacity
F100-2	1/4"	8 oz.
F100-3	3/8"	8 oz.
F100-4	1/2"	8 oz.
F100-6"	3/4"	16 oz.
F100-8"	1"	16 oz.

Michigan Pneumatic

Filters - with Automatic Drain

MPT airline filters with automatic drain automatically discharge water and contaminants from a filter for maximum protection of air operated equipment. Eliminates filter overflow. **Other sizes available up to 2". Features a 5 micron sintered plastic element. *High Capacity.**



Model FD100-4

Model No.	Pipe Size	Capacity
FD100-2	1/4"	8 oz.
FD100-3	3/8"	8 oz.
FD100-4	1/2"	8 oz.
FD100-6"	3/4"	16 oz.
FD100-8"	1"	16 oz.

The above accessories will improve tool performance and increase tool life. For best results, mount accessories as close to the tool as possible. Made in the U.S.A.

Air Line Lubricators



Portable Air Line Lubricators

Designed to supply oil to air tools where it is not practical to use stationary lubricators. Can be installed as far away as 25 feet. Oil flows into the line each time the tool is started. Easy and inexpensive way to keep air tools operating at peak efficiency. Features adjustable oil flow, visible oil supply and rugged casting for use in severe conditions.

In-line filters designed to screw directly into the lubricators available on page 155.

TX-02000PR Pressure Relief Cap TXLRK Repair Kit



Model 0-R
Lubricator with optional pressure release cap

Model No.	Oil Capacity	Pipe Size	Rec'd Air Flow @70PSI	Max. PSI	Length	Height	Weight
0-R	1.4 oz.	1/2"	30 cfm	500	4-1/2"	2-1/4"	0.88 lbs.
1-R	3.7 oz.	3/4"	70 cfm	260	6"	2-3/4"	1.50 lbs.
2-R	11.0 oz.	3/4"	70 cfm	300	7"	3-1/2"	2.00 lbs.
2A-R	11.0 oz.	1"	70 cfm	300	7"	3-1/2"	2.00 lbs.
3-R	16.0 oz.	1"	150 cfm	250	10"	3-3/4"	4.25 lbs.

In-line Lubricator w/ Integral Filter



Model TX-1L-F

Model No.	Oil Capacity	Pipe Size	Rec'd Air Flow @70PSI	Max. PSI	Height
TX-0L-F	1.4 oz.	1/2"	30 cfm	500	2-1/4"
TX-1L-F	3.7 oz.	3/4"	70 cfm	260	2-3/4"

Safety Lock Cables

Helps prevent injury due to broken hose connections. Spring-powered loops provide a firm grip on the hose. **Bleed air pressure from hose before removing safety lock cable.**



Model TX-SLC1

Model No.	Cable Description (Dia. x L)	Fits Hose OD
TX-SLC1	1/8" x 20"	1/2" to 1-1/4"
TX-SLC2	1/4" x 38"	1-1/2" to 3"

Lubricator Whip Hose Assemblies



MADE U.S.A. IN THE

Model MP-3HW

Model MP-4HW

Model No.	Assembly Components			Air Flow @ 70 psi
	Fitting to Tool	Hose	Lubricator	
MP-1HW	1/4" MPT	1/2" ID x 6 ft.	0-R	30 cfm
MP-2HW	3/8" MPT			
MP-3HW	1/2" MPT			
MP-4HW	L-1 swivel (7/8"-24 thread)			
MP-4HW-0.500	L-3 swivel (1/2" MPT)			

Additional lubricator whip hose assemblies available.



Oil & Air Line Accessories

Air Inlet Hose Swivels

For use on all chipping hammers and rivet busters. Designed to eliminate hose kinking or twisting for greater operator efficiency.

Model No.	Fitting to Tool	Hose Connection	Note
L-1	7/8" -24 thread	1/2" hose barb	Swivel Only
L-2		3/8" MPT	
L-4		3/8" FPT	
L-5	3/8" MPT	1/2" hose barb	
L-3	1/2" MPT	1/2" hose barb	
L-8	3/4" MPT	1/2" MPT	
L-1-Whip	7/8" -24 thread	1/2" hose barb	Swivel with 1/2" x 10 ft. whip hose and CP fitting
L-5-Whip	3/8" MPT		
L-3-Whip	1/2" MPT		



360° Swivels

Bi-directional 360° rotation universal joint keeps air hoses straight and untwisted. Increases the maneuverability of air tools and decreases operator fatigue.



- Model 922A 1/4" NPT (Aluminum)
- Model 933A 3/8" NPT (Aluminum)
- Model 933ST 3/8" NPT (Steel)
- Model 944A 1/2" NPT (Aluminum/Steel)

Screened Inlet Bushings

Keeps rust and other air line debris from contaminating your tools. Manufactured from solid steel with brass screens pressed into the bushing.

MADE U.S.A. IN THE



Model No.	Description
1989	1/4" MPT x 1/4" FPT
1990	1/4" MPT x 3/8" FPT
1991	3/8" MPT x 1/4" FPT
1992	3/8" MPT x 3/8" FPT
1993	3/8" MPT x 1/2" FPT
1994	1/2" MPT x 3/8" FPT
1995	1/2" MPT x 1/2" FPT

In-Line Air Filters

Protects air tools from rust, scale and dirt. Reduces expensive repairs and prolongs tool life. Designed for installation on air line at the point of use. Features a 40 micron sintered bronze filter element.

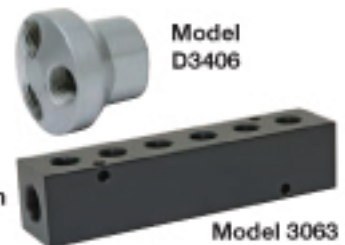


Model 9074

Model No.	Inlet Size	Outlet Size	Length
9072	1/4" FPT	1/4" MPT	2-5/16"
9073	3/8" FPT	3/8" MPT	2-5/16"
9074M	1/2" FPT	1/2" MPT	3-1/4"
9076M	3/4" FPT	3/4" MPT	3-1/4"
9074	1/2" FPT	1/2" FPT	3-1/4"
9076	3/4" FPT	3/4" FPT	3-1/4"

In-line Manifolds

- Supply up to 6 air hoses from one station, using up to 6 different style couplers
- Mount to workbench or wall
- Permits use of air by more than one mechanic



Model No.	Inlet Size	Outlet Size	No. of Ports
D3404	1/4"	1/4"	3
D3406	3/8"		
D3408	1/2"		
3043	3/8"	1/4"	4
3063			6

Marvel

Air Tool Oil

A specially formulated high grade lubricating oil for all piston and rotary-type air tools. Lubricates and rust proofs for longer tool life.

- OIL-080 4 Ounce
- OIL-085 1 Quart



Winter Grade Oil

with De-Icing Additive

Designed for extreme weather conditions down to -45° F. Eliminates freezing while lubricating tools. Can be used in conventional air line lubricators or applied directly into the tools air inlet.

- Convenient "flip up" pour top (4 oz. and pint bottles only)

- ATL004W 4 Ounce
- ATL016W 1 Pint
- ATL128W 1 Gallon

